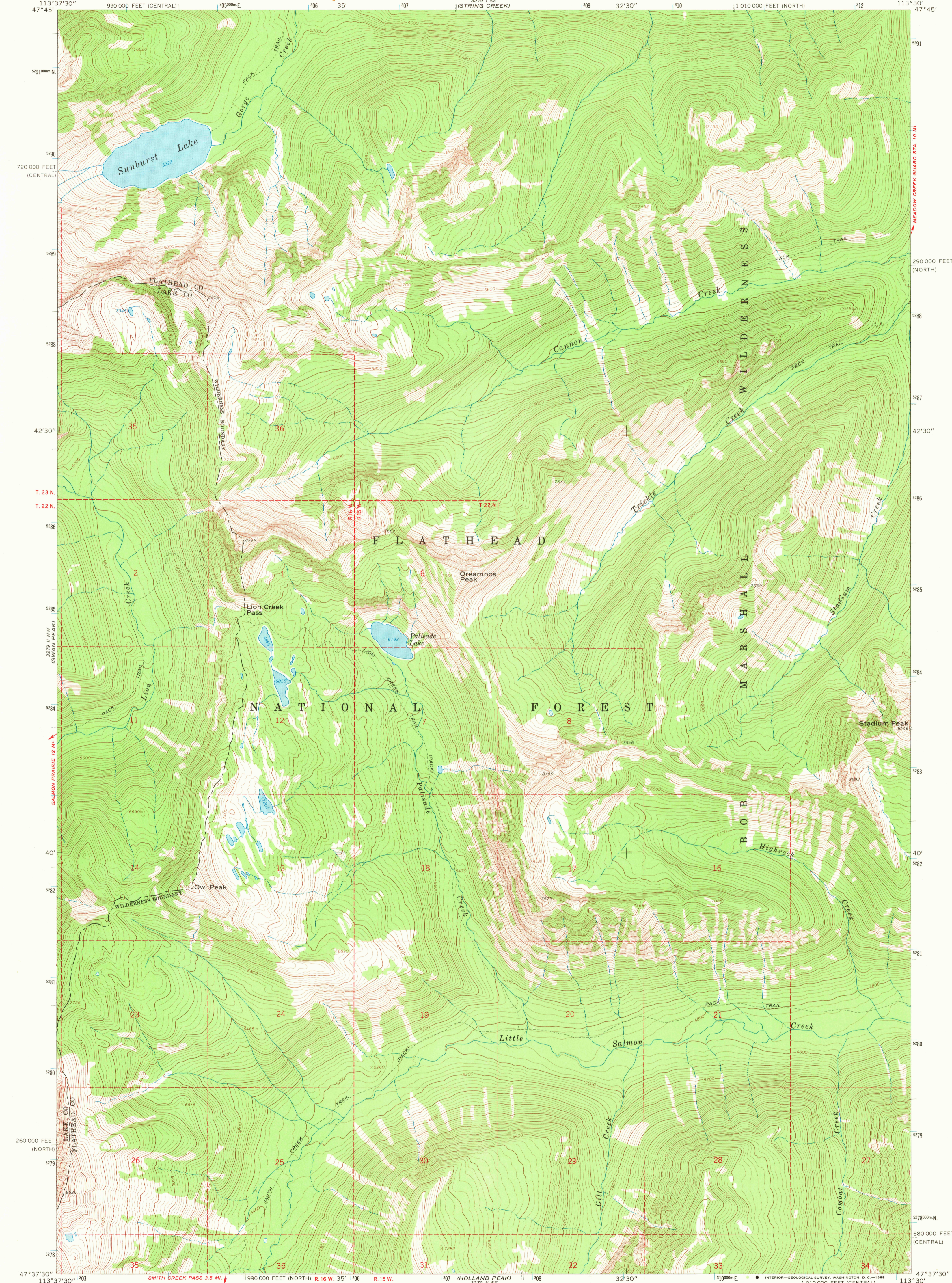
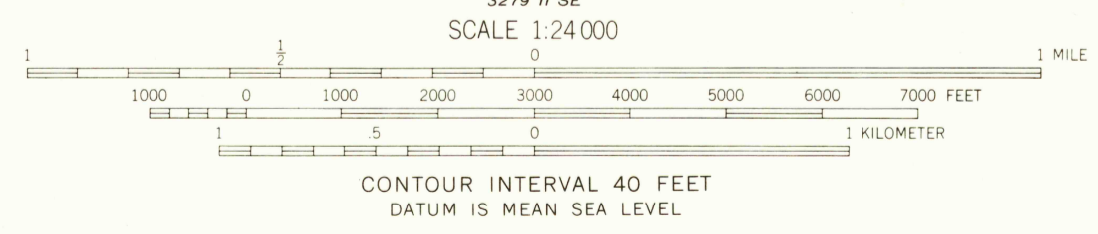
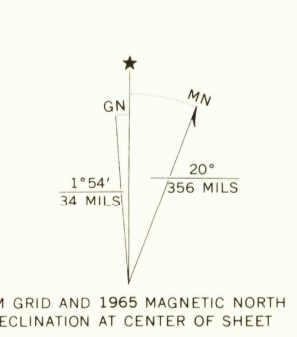


3279 I NW
FLATHEAD
MOUNTAIN



Mapped, edited, and published by the Geological Survey
Control by USGS and USC&GS
Topography by photogrammetric methods from aerial photographs taken 1964. Field checked 1965
Polyconic projection. 1927 North American datum
10,000-foot grids based on Montana coordinate system, north and central zones
1000-meter Universal Transverse Mercator grid ticks, zone 12, shown in blue
Where omitted, land lines have not been established



SUNBURST LAKE, MONT.
N4737.5—W11330/7.5

U.S.G.S.
FILE COPY
TOPOGRAPHIC DIVISION

USGS
Historical File
Topographic Division

2800
NOV 8 1968