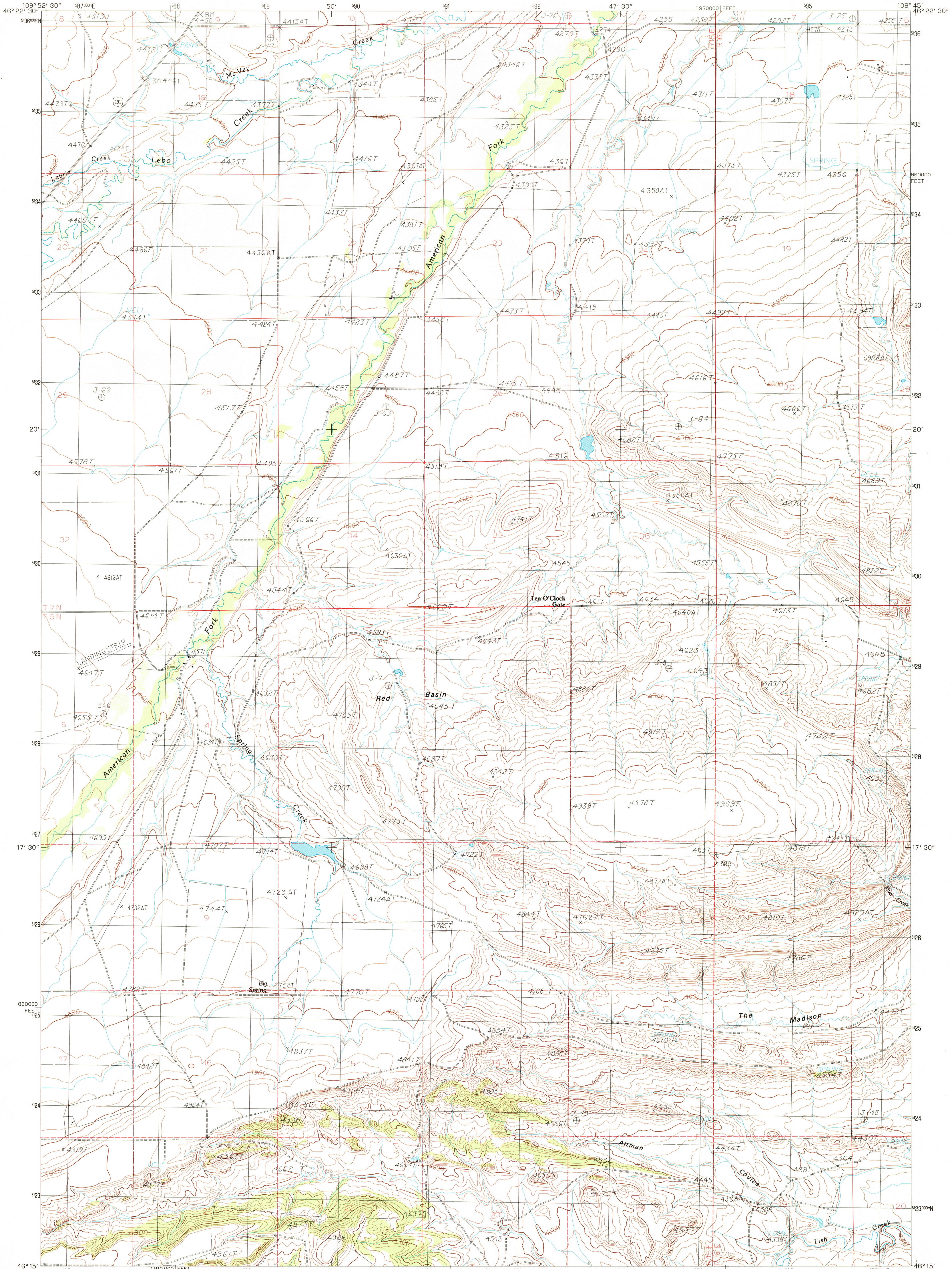


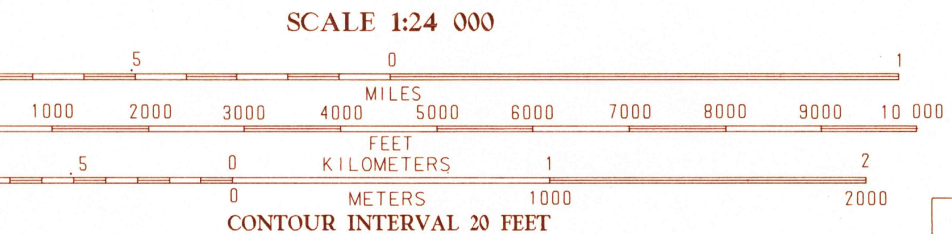
UNITED STATES  
DEPARTMENT OF THE INTERIOR  
GEOLOGICAL SURVEY

TEN O'CLOCK GATE QUADRANGLE  
MONTANA-WHEATLAND CO.  
7.5 MINUTE SERIES (TOPOGRAPHIC)

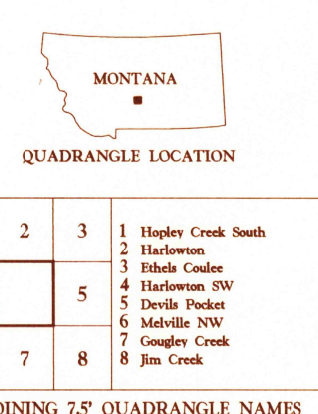


PRODUCED BY THE UNITED STATES GEOLOGICAL SURVEY  
CONTROL BY U.S.G.S. NOS/NOAA  
COMPILED FROM AERIAL PHOTOGRAPHS TAKEN . . . . . 1979  
FIELD CHECKED . . . . . 1980 MAP EDITED . . . . . 1986  
PROJECTION . . . . . LAMBERT CONFORMAL CONIC  
GRID: 100-METER UNIVERSAL TRANSVERSE MERCATOR . . . . . ZONE 12  
1000-FOOT STATE GRID TICKS . . . . . MONTANA, SOUTH ZONE  
UTM GRID DECLINATION . . . . . 9°52' EAST  
1986 MAGNETIC NORTH DECLINATION . . . . . 15°30' EAST  
VERTICAL DATUM . . . . . NATIONAL GEODETIC VERTICAL DATUM OF 1929  
HORIZONTAL DATUM . . . . . 1927 NORTH AMERICAN DATUM  
To place on the predicted North American Datum of 1983,  
move the projection lines as shown by dashed corner ticks  
(9 meters north and 58 meters east)  
There may be private inholdings within the boundaries of any  
Federal and State Reservations shown on this map  
All marginal data and lettering generated and positioned by  
automated type placement procedures

**PROVISIONAL MAP**  
Produced from original  
manuscript drawings. Informa-  
tion shown as of date of  
field check.



THIS MAP COMPLIES WITH NATIONAL MAP ACCURACY STANDARDS  
FOR SALE BY U.S. GEOLOGICAL SURVEY, DENVER, COLORADO 80225  
OR RESTON, VIRGINIA 22092



ROAD LEGEND

Improved Road . . . . .  
Unimproved Road . . . . .  
Trail . . . . .  
Interstate Route U.S. Route State Route

TEN O'CLOCK GATE, MONTANA  
PROVISIONAL EDITION 1986

USGS NMD HISTORICAL MAP  
JUN 05 1986  
REC'D FILE COPY

46109-C7-TF-024