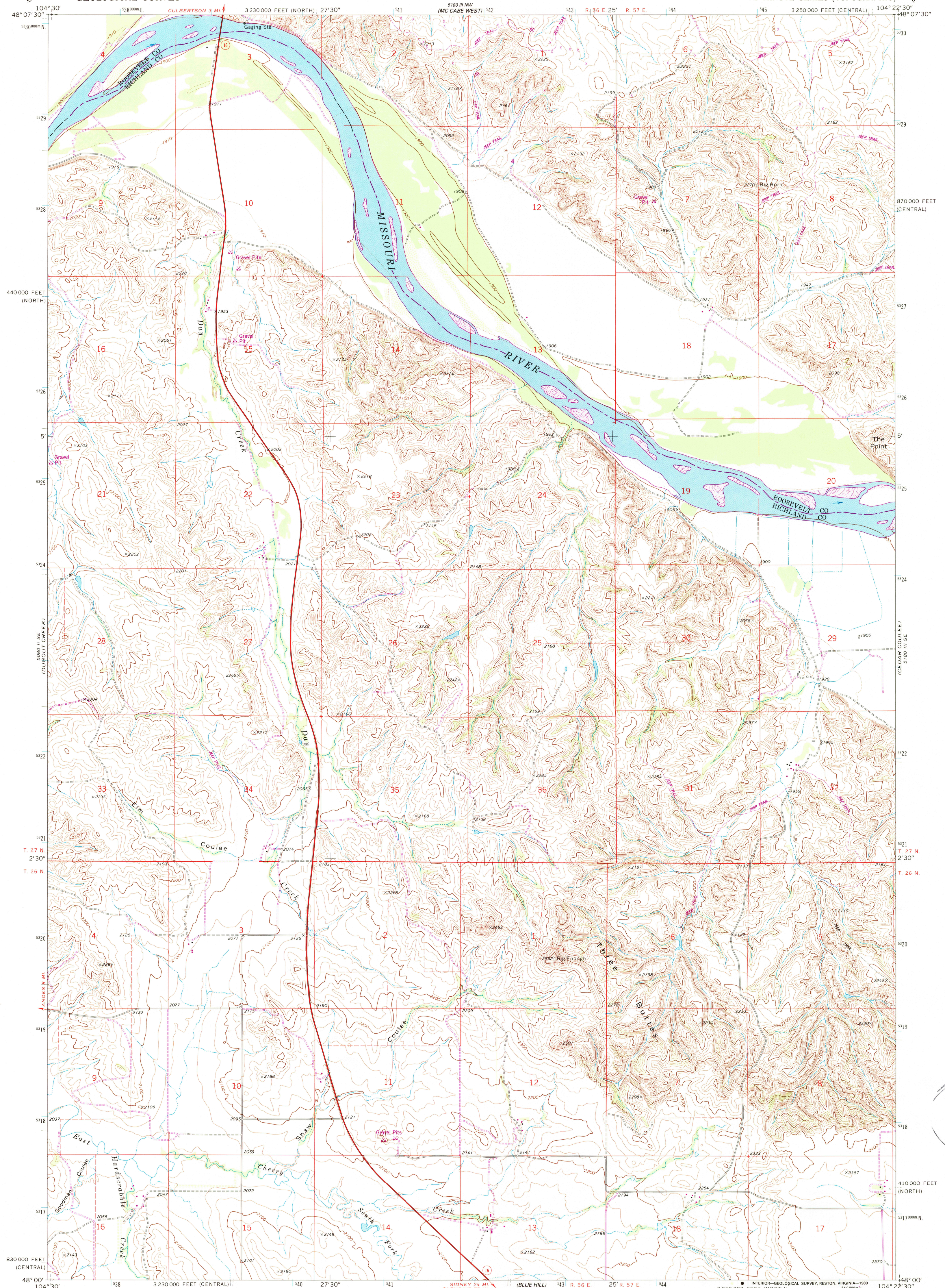
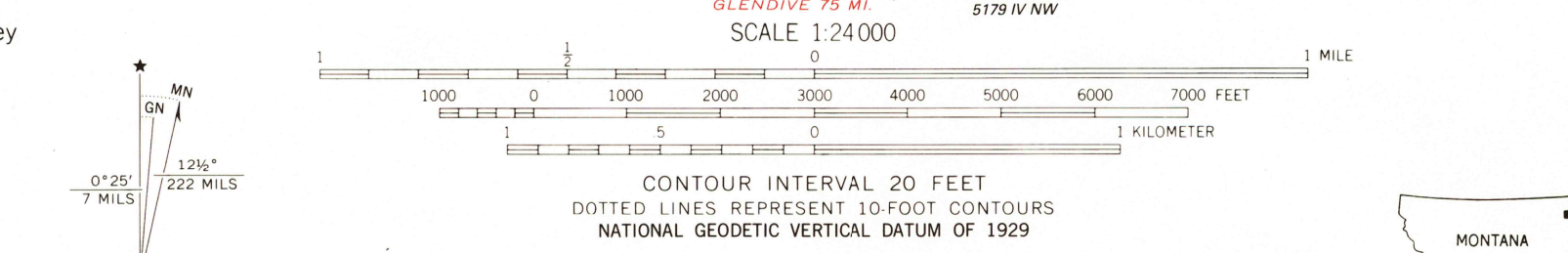


UNITED STATES
DEPARTMENT OF THE INTERIOR
GEOLOGICAL SURVEY

THREE BUTTES QUADRANGLE
MONTANA
7.5 MINUTE SERIES (TOPOGRAPHIC)



Mapped, edited, and published by the Geological Survey as part of the Department of the Interior program for the development of the Missouri River Basin Control by USGS, USC&GS, and Missouri River Commission
Topography by photogrammetric methods from aerial photographs taken 1968. Field checked 1969.
Polyconic projection. 1927 North American datum 10,000-foot grids based on Montana coordinate system, central and north zones
1000-meter Universal Transverse Mercator grid ticks, zone 13, shown in blue
Fine red dashed lines indicate selected fence lines
To place on the predicted North American Datum 1983 move the projection lines 2 meters north and 38 meters east as shown by dashed corner ticks



ROAD CLASSIFICATION

Primary highway, hard surface	Light-duty road, hard or improved surface
Secondary highway, hard surface	Unimproved road
Interstate Route	U. S. Route
	State Route



THREE BUTTES, MONT.
48104-A4-TF-024

1969
PHOTOREVISED 1989
DMA 5180 III SW - SERIES V894

USGS NMD HISTORICAL MAP
SEP 05 1989
REC'D FILE COPY

THIS MAP COMPLIES WITH NATIONAL MAP ACCURACY STANDARDS
FOR SALE BY U. S. GEOLOGICAL SURVEY, DENVER, COLORADO 80225 OR RESTON, VIRGINIA 22092
A FOLDER DESCRIBING TOPOGRAPHIC MAPS AND SYMBOLS IS AVAILABLE ON REQUEST

Revisions shown in purple and woodland compiled from aerial photographs taken 1980 and other sources. This information not field checked. Map edited 1989