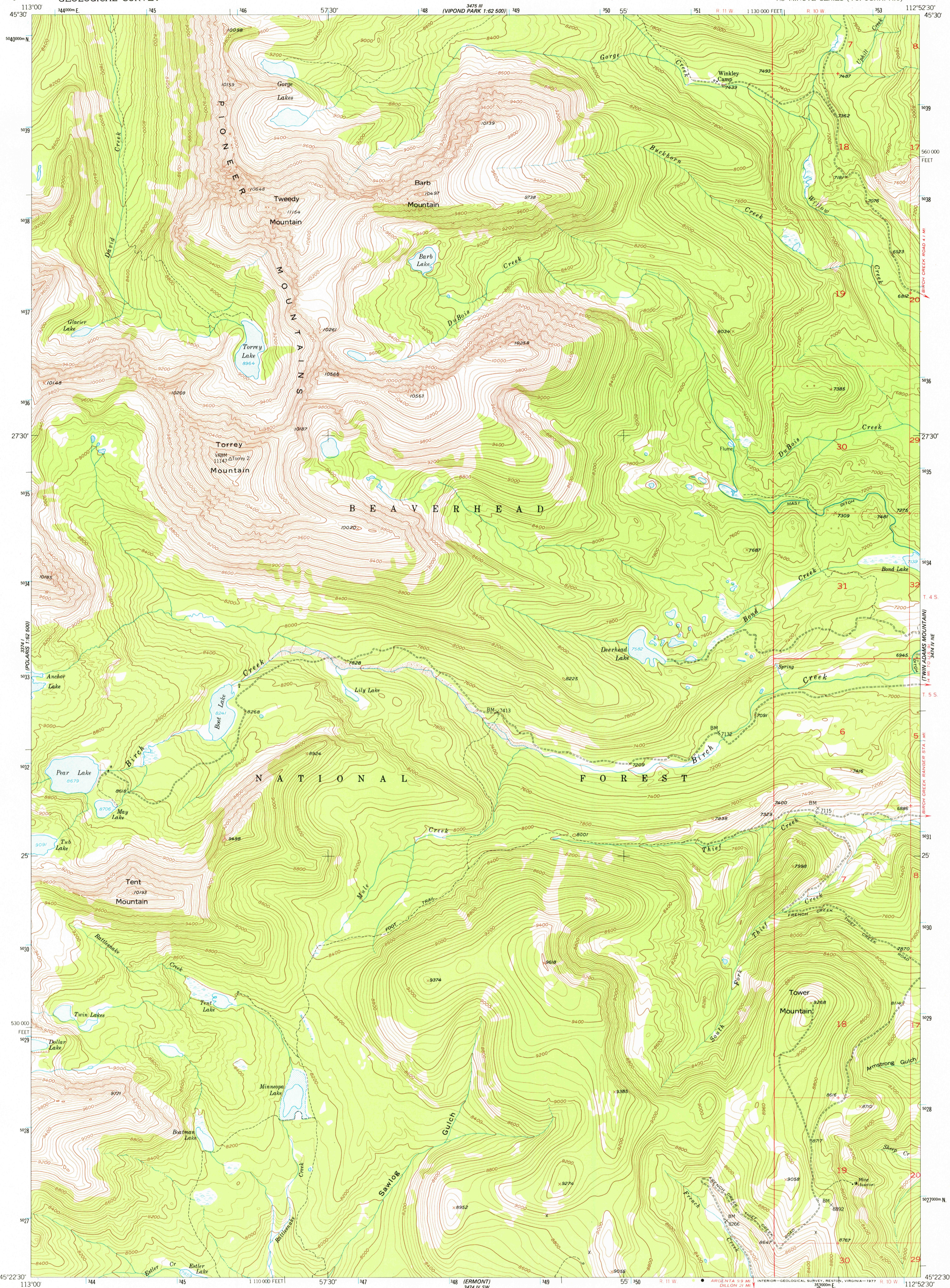


UNITED STATES  
DEPARTMENT OF THE INTERIOR  
GEOLOGICAL SURVEY

TORREY MOUNTAIN QUADRANGLE  
MONTANA-BEAVERHEAD CO.  
7.5 MINUTE SERIES (TOPOGRAPHIC)



Maped, edited, and published by the Geological Survey  
Control by USGS and USC&GS

Topography from aerial photographs by multiplex methods  
Aerial photographs taken 1950. Field check 1952

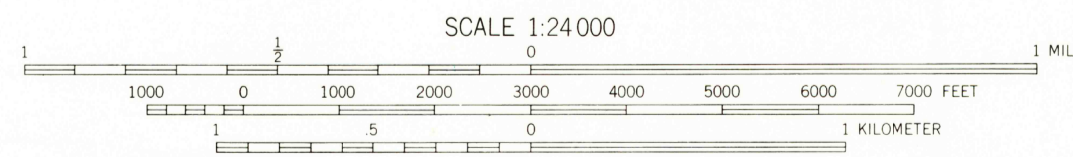
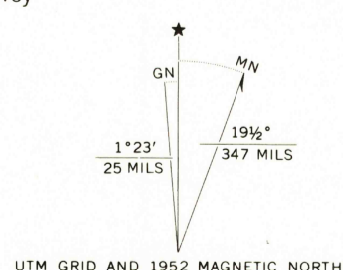
Polyconic projection. 1927 North American datum  
10,000-foot grid based on Montana coordinate system,  
south zone

Dashed land lines indicate approximate locations

1000-meter Universal Transverse Mercator grid ticks,  
zone 12, shown in blue

Map photoinspected 1976

No major culture or drainage changes observed



CONTOUR INTERVAL 40 FEET  
NATIONAL GEODETIC VERTICAL DATUM OF 1929

THIS MAP COMPLIES WITH NATIONAL MAP ACCURACY STANDARDS  
FOR SALE BY U. S. GEOLOGICAL SURVEY, DENVER, COLORADO 80225, OR RESTON, VIRGINIA 22092  
A FOLDER DESCRIBING TOPOGRAPHIC MAPS AND SYMBOLS IS AVAILABLE ON REQUEST



ROAD CLASSIFICATION  
Heavy-duty 4 LANE 16 LANE Light-duty  
Medium-duty 4 LANE 16 LANE Unimproved dirt  
U. S. Route State Route

TORREY MOUNTAIN, MONT  
N4522.5-W11252.5/7.5

USGS  
Historical File  
Topographic Division

1952  
PHOTOINSPECTED 1976  
AMS 3474 IV NW-SERIES V894

4300  
OCT 13 1977