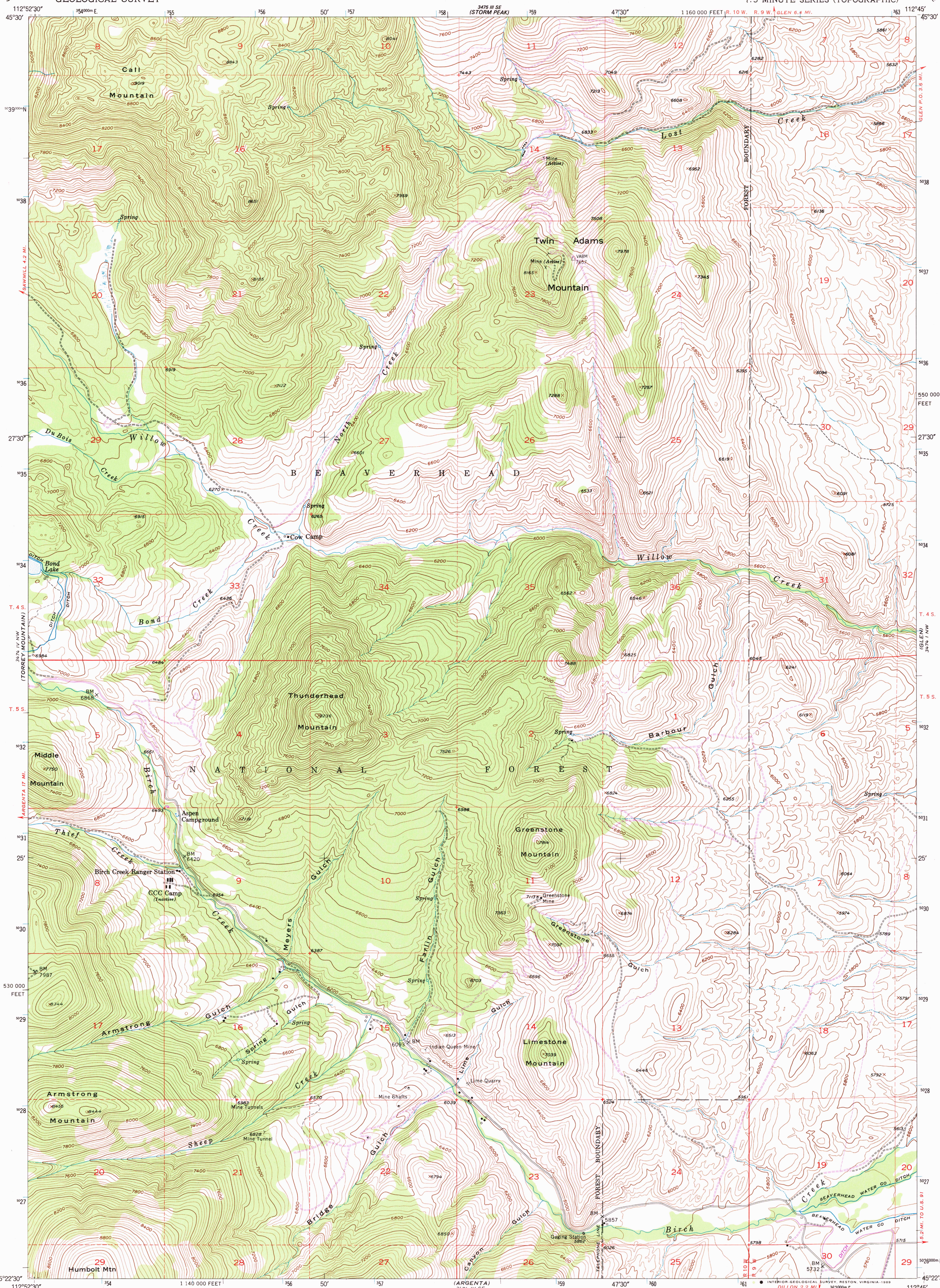


UNITED STATES  
DEPARTMENT OF THE INTERIOR  
GEOLOGICAL SURVEY

TWIN ADAMS MOUNTAIN QUADRANGLE  
MONTANA-BEAVERHEAD CO.  
7.5 MINUTE SERIES (TOPOGRAPHIC)



Maped, edited, and published by the Geological Survey

Control by USGS and NOS/NOAA

Topography from aerial photographs by multiplex methods

Aerial photographs taken 1950. Field check 1952

Polyconic projection. 1927 North American Datum

10,000-foot grid based on Montana coordinate system,

south zone

Dashed land lines indicate approximate locations

All mining features are inactive unless otherwise noted

1000-meter Universal Transverse Mercator grid ticks,

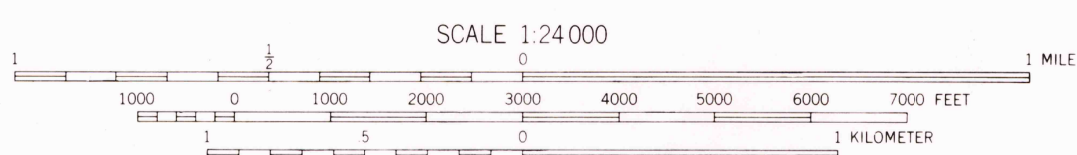
zone 12, shown in blue

To place on the predicted North American Datum 1983

move the projection lines 12 meters north and

68 meters east as shown by dashed corner ticks

UTM GRID AND 1983 MAGNETIC NORTH  
DECLINATION AT CENTER OF SHEET  
There may be private inholdings within  
the boundaries of the National or State  
reservations shown on this map



CONTOUR INTERVAL 40 FEET  
NATIONAL GEODETIC VERTICAL DATUM OF 1929

THIS MAP COMPLIES WITH NATIONAL MAP ACCURACY STANDARDS  
FOR SALE BY U.S. GEOLOGICAL SURVEY  
DENVER, COLORADO 80225, OR RESTON, VIRGINIA 22092  
A FOLDER DESCRIBING TOPOGRAPHIC MAPS AND SYMBOLS IS AVAILABLE ON REQUEST

ROAD CLASSIFICATION

Heavy-duty — 1 LANE 16 LANE Light-duty —  
Medium-duty — 1 LANE 16 LANE Unimproved dirt —  
U.S. Route — State Route —

TWIN ADAMS MOUNTAIN, MONT.  
45112-D7-TF-024

Revisions shown in purple and woodland  
compiled from aerial photographs taken 1984  
and other source data. Partial field check  
by U.S. Forest Service. Map edited 1988

1982  
PHOTOREVISED 1988  
DMA 3474 IV NE-SERIES V894

RECD FILE COPY

APR 28 1989

USGS MND HISTORICAL MAP