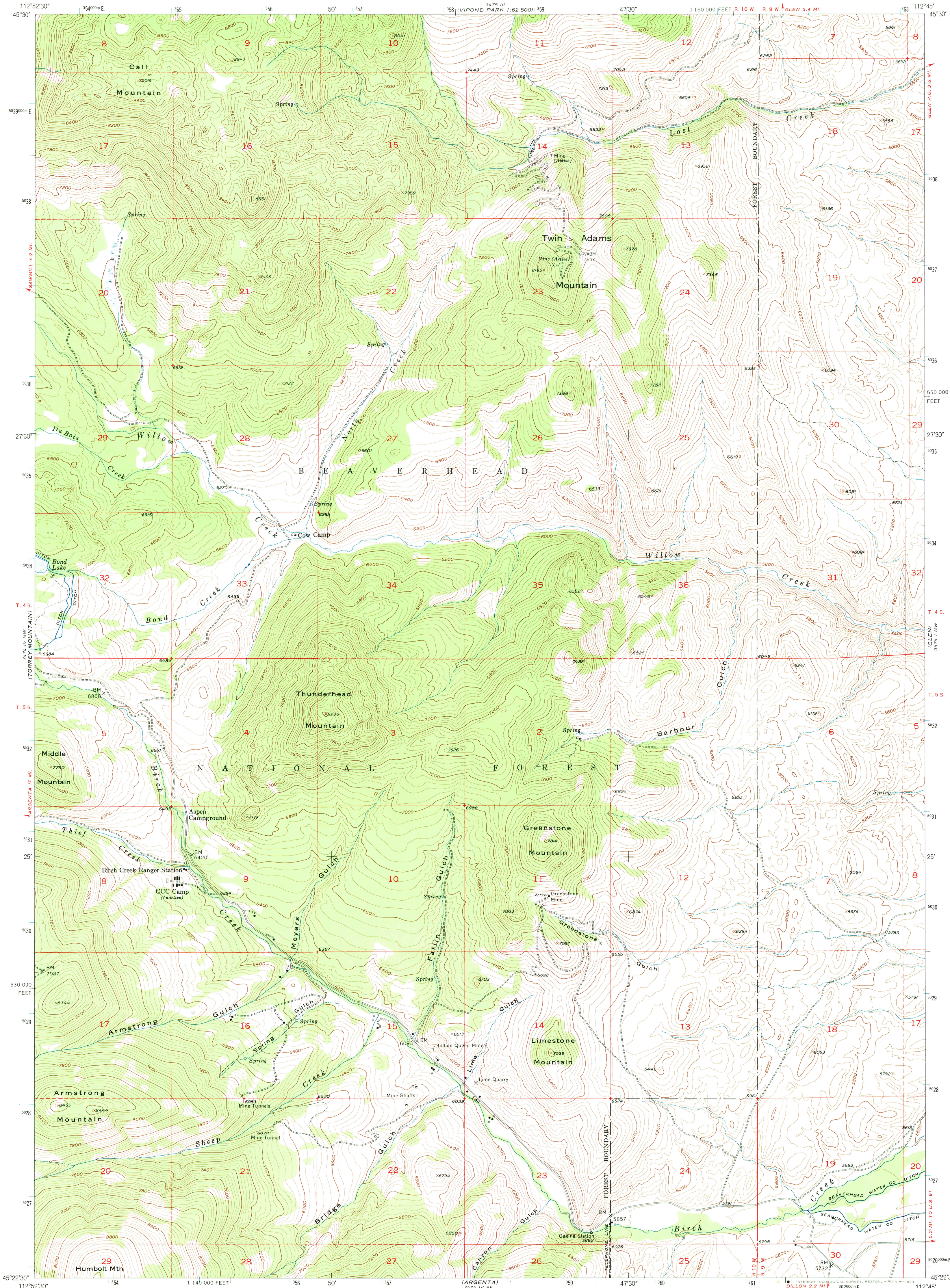
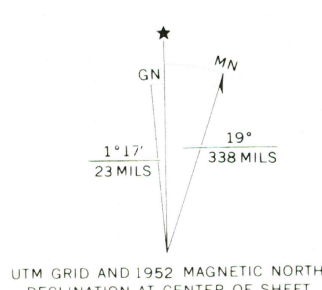


UNITED STATES  
DEPARTMENT OF THE INTERIOR  
GEOLOGICAL SURVEY

TWIN ADAMS MOUNTAIN QUADRANGLE  
MONTANA-BEAVERHEAD CO.  
7.5 MINUTE SERIES (TOPOGRAPHIC)



Mapped, edited, and published by the Geological Survey  
Control by USGS, and USC&GS  
Topography from aerial photographs by multiplex methods  
Aerial photographs taken 1950. Field check 1952  
Polyconic projection. 1927 North American datum  
10,000-foot grid based on Montana coordinate system,  
south zone  
Dashed land lines indicate approximate locations  
All mining features are inactive unless otherwise noted  
1000-meter Universal Transverse Mercator grid ticks,  
zone 12, shown in blue



SCALE 1:24,000  
CONTOUR INTERVAL 40 FEET  
DATUM IS MEAN SEA LEVEL



USGS  
Historical File  
Topographic Division

TWIN ADAMS MOUNTAIN, MONT.  
N4522.5-W11245.7.5

1952

AMS 3474 IV NE-SERIES V894

THIS MAP COMPLIES WITH NATIONAL MAP ACCURACY STANDARDS  
FOR SALE BY U.S. GEOLOGICAL SURVEY, DENVER, COLORADO 80225, OR RESTON, VIRGINIA 22092  
A FOLDER DESCRIBING TOPOGRAPHIC MAPS AND SYMBOLS IS AVAILABLE ON REQUEST

MAR 22 1974

1256