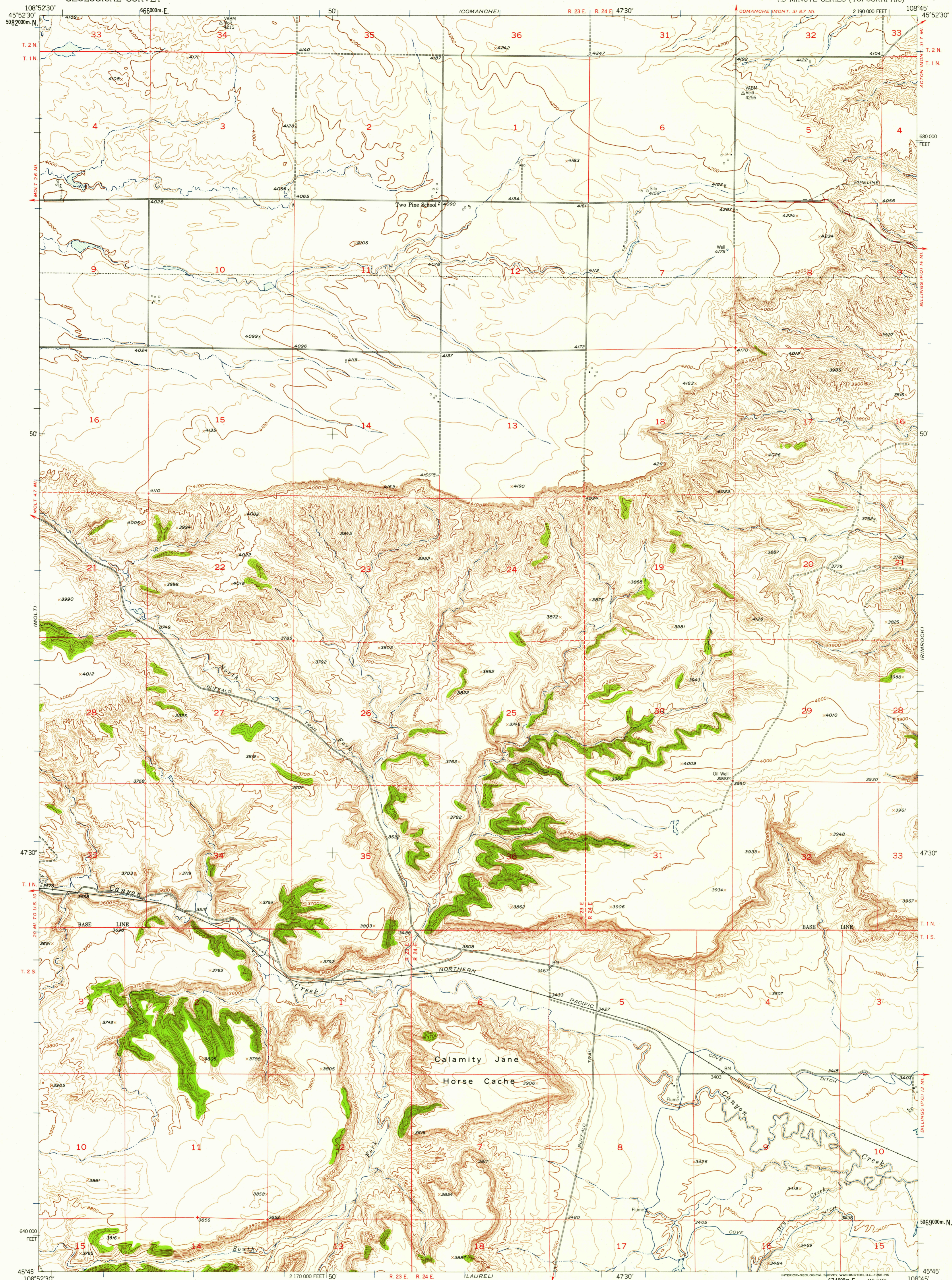


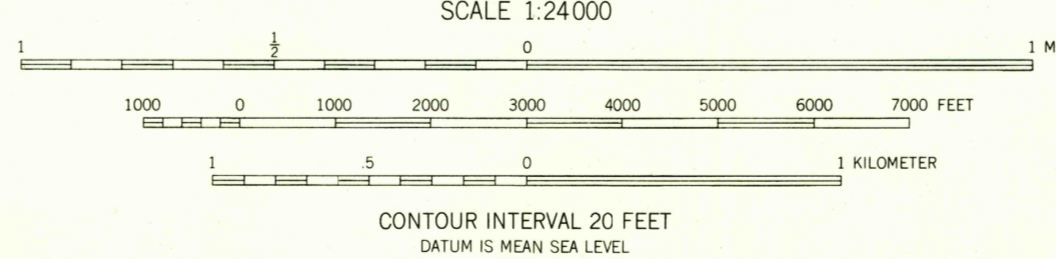
UNITED STATES  
DEPARTMENT OF THE INTERIOR  
GEOLOGICAL SURVEY

TWO PINE SCHOOL QUADRANGLE  
MONTANA-YELLOWSTONE CO.  
7.5 MINUTE SERIES (TOPOGRAPHIC)



Mapped, edited, and published by the Geological Survey as part of the Department of the Interior program for the development of the Missouri River Basin. Control by USGS and USC&GS. Topography from aerial photographs by photogrammetric methods. Aerial photographs taken 1951. Field check 1956. Polyconic projection. 1927 North American datum. 10,000-foot grid based on Montana coordinate system, south zone. 1000-meter Universal Transverse Mercator grid ticks, zone 12, shown in blue. Dashed land lines indicate approximate locations.

TRUE NORTH  
MAGNETIC NORTH  
APPROXIMATE MEAN DECLINATION, 1956



ROAD CLASSIFICATION  
Medium-duty ——— Light-duty ———  
Unimproved dirt =-----

TWO PINE SCHOOL, MONT.  
N4545—W10845/7.5  
1956

THIS MAP COMPLIES WITH NATIONAL MAP ACCURACY STANDARDS  
FOR SALE BY U.S. GEOLOGICAL SURVEY, DENVER 2, COLORADO OR WASHINGTON 25, D. C.  
A FOLDER DESCRIBING TOPOGRAPHIC MAPS AND SYMBOLS IS AVAILABLE ON REQUEST

USGS  
Historical File  
Topographic Division

U.S.G.S.  
FILE COPY  
TOPOGRAPHIC DIVISION

APR 23 1958  
1929