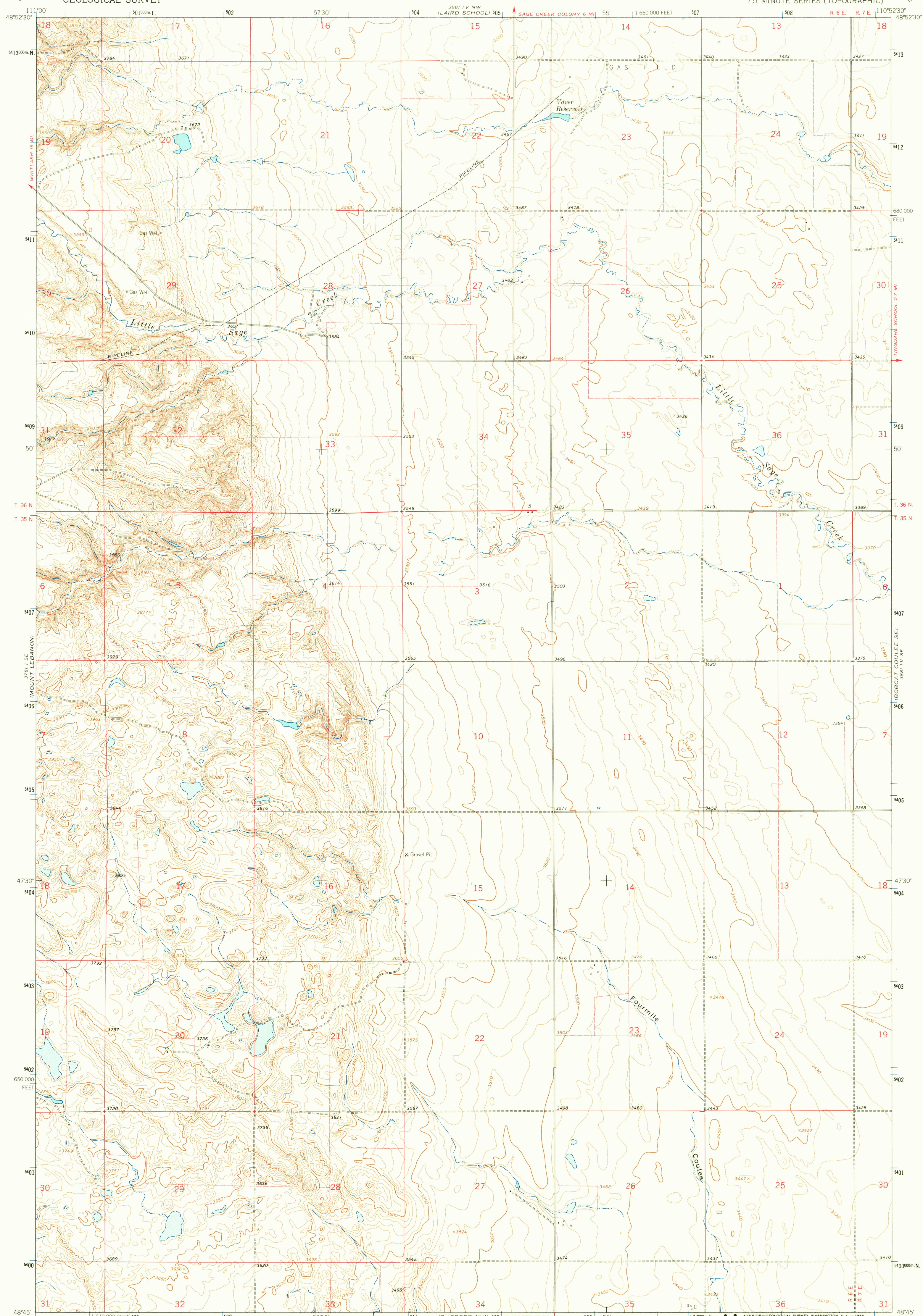


3781 IV NE
GANGWAI LAKE

UNITED STATES
DEPARTMENT OF THE INTERIOR
GEOLOGICAL SURVEY

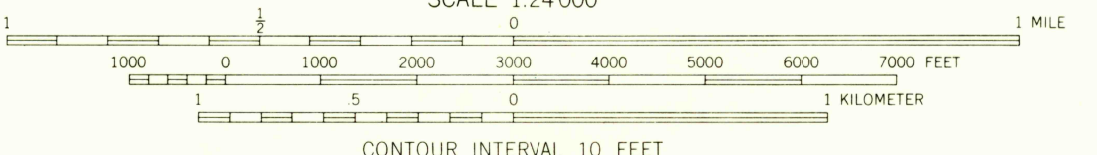
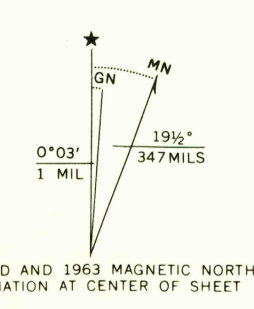
VAVER RESERVOIR QUADRANGLE
MONTANA-LIBERTY CO.
7.5 MINUTE SERIES (TOPOGRAPHIC)

3881 IV NE
BOBCAT COULLEE NE



LAKE PANCHO
3781 IV SE

Mapped, edited, and published by the Geological Survey
Control by USGS and USC&GS
Topography by photogrammetric methods from aerial
photographs taken 1962. Field checked 1963
Polyconic projection. 1927 North American datum.
10,000-foot grid based on Montana coordinate system, north zone
1000-meter Universal Transverse Mercator grid ticks,
zone 12, shown in blue
Fine red dashed lines indicate selected fence lines



ROAD CLASSIFICATION
Light-duty _____ Unimproved dirt _____

U.S.G.S.
FILE COPY
TOPOGRAPHIC DIVISION

USGS
Historical File
Topographic Division

2085
MAY 3 1966

VAVER RESERVOIR, MONT.
N845-W11052.5/7.5
1963

THIS MAP COMPLIES WITH NATIONAL MAP ACCURACY STANDARDS
FOR SALE BY U.S. GEOLOGICAL SURVEY, DENVER, COLORADO 80225, OR WASHINGTON, D. C. 20542
A FOLDER DESCRIBING TOPOGRAPHIC MAPS AND SYMBOLS IS AVAILABLE ON REQUEST

AMS 3881 IV SW - SERIES V694