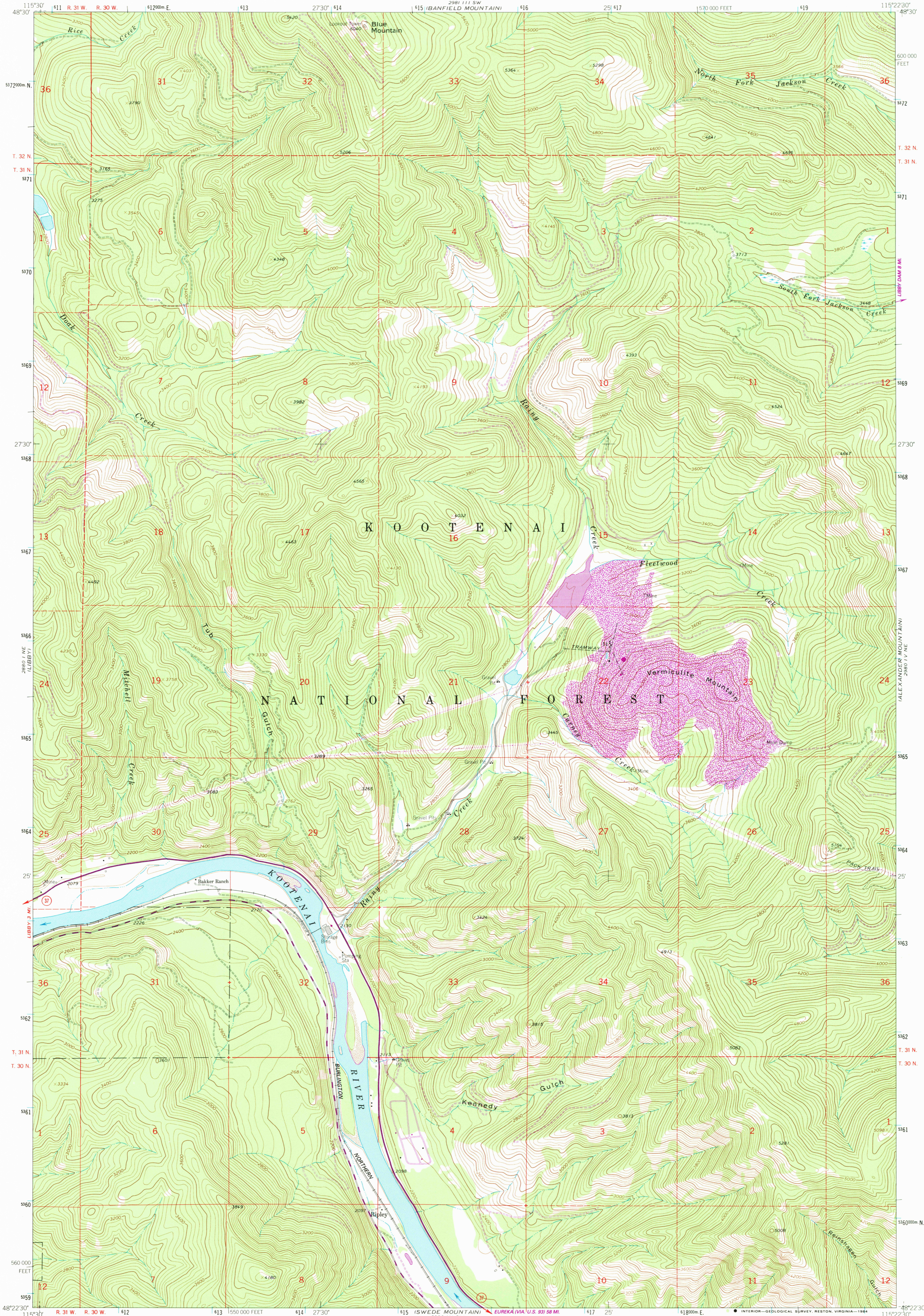


2860 I SE  
GOLD HILL

UNITED STATES  
DEPARTMENT OF THE INTERIOR  
GEOLOGICAL SURVEY

VERMICULITE MOUNTAIN QUADRANGLE  
MONTANA—LINCOLN CO.  
7.5 MINUTE SERIES (TOPOGRAPHIC)

2860 I SE  
LITTLE HODDGE MOUNTAIN



Mapped, edited, and published by the Geological Survey

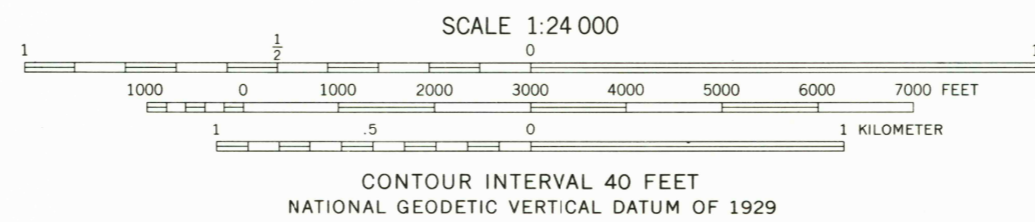
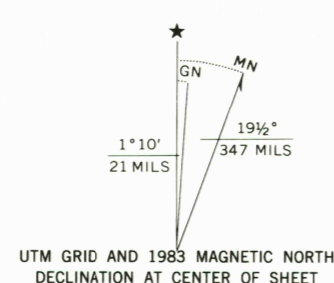
Control by USGS and NOS/NOAA

Topography by photogrammetric methods from aerial photographs taken 1962 and 1963. Field checked 1963

Polyconic projection. 1927 North American Datum. 10,000-foot grid based on Montana coordinate system, north zone. 1000-meter Universal Transverse Mercator grid ticks, zone 11, shown in blue.

There may be private inholdings within the boundaries of the National or State reservations shown on this map.

To place on the predicted North American Datum 1983 move the projection lines 12 meters north and 74 meters east as shown by dashed corner ticks.



VERMICULITE MOUNTAIN, MONT.  
48115-04-TF-024

THIS MAP COMPLIES WITH NATIONAL MAP ACCURACY STANDARDS.  
FOR SALE BY U. S. GEOLOGICAL SURVEY, DENVER, COLORADO 80225, OR RESTON, VIRGINIA 22092.  
A FOLDER DESCRIBING TOPOGRAPHIC MAPS AND SYMBOLS IS AVAILABLE ON REQUEST.

Revisions shown in purple and woodland compiled from aerial photographs taken 1982 and other source data. Partial field check by U.S. Forest Service. Map edited 1983.

1963  
PHOTOREVISED 1983  
DMA 2860 IV NW—SERIES V894

RETURN TO:  
USGS NHD HISTORICAL MAP ARCHIVES

3/16/84