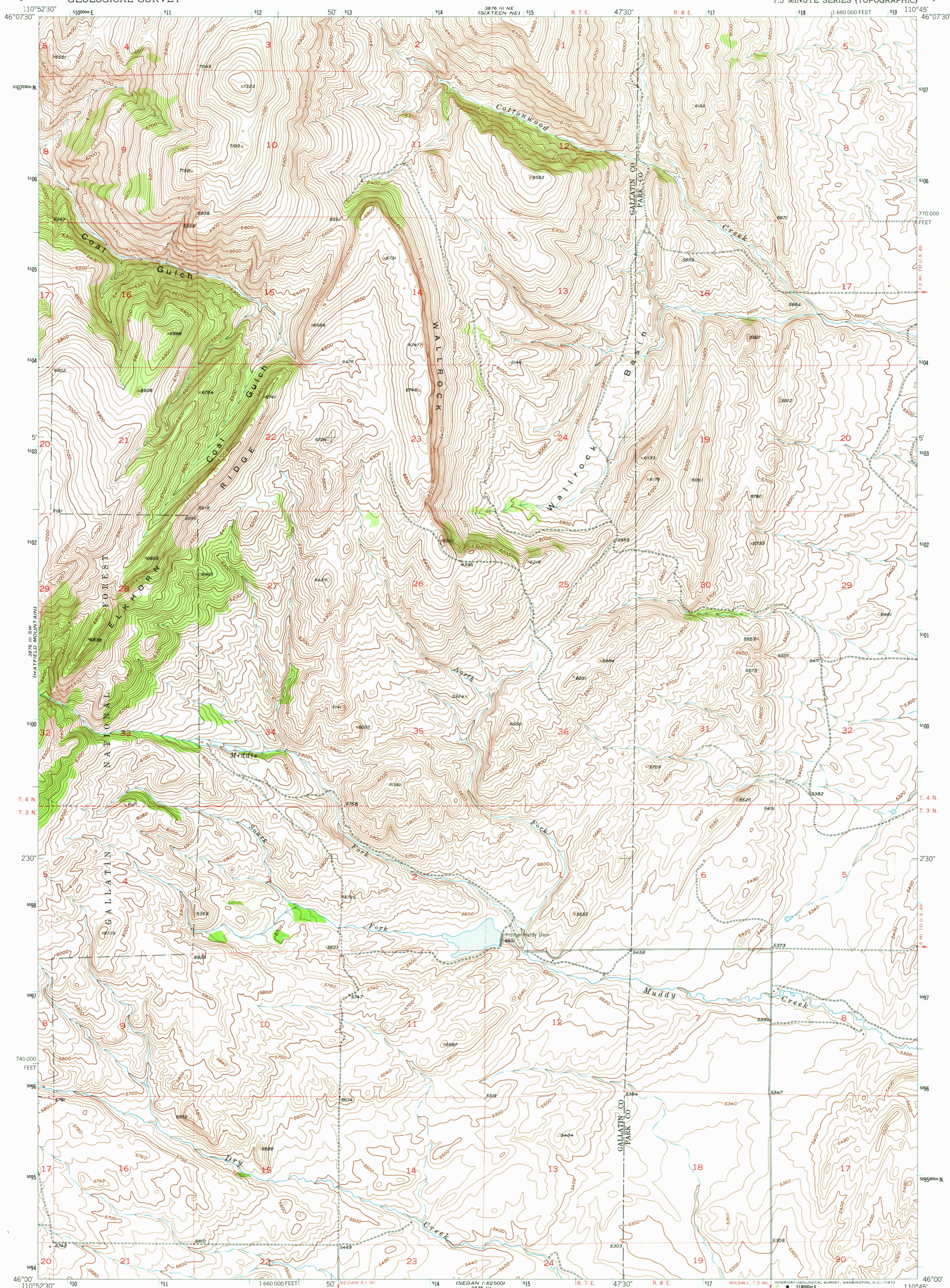
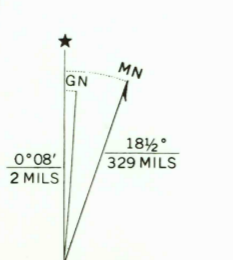


UNITED STATES
DEPARTMENT OF THE INTERIOR
GEOLOGICAL SURVEY

WALLROCK QUADRANGLE
MONTANA
7.5 MINUTE SERIES (TOPOGRAPHIC)



Mapped by the Geological Survey and the Bureau of Reclamation
Field examination and publication by the Geological Survey
as part of the Department of the Interior program
for the development of the Missouri River Basin
Control by USGS and USC&GS
Topography from aerial photographs by stereophotogrammetric
methods 1948 and 1951. Aerial photographs taken 1947
Field check 1951
Polyconic projection. 1927 North American datum
10,000-foot grid based on Montana coordinate system,
south zone
Dashed land lines indicate approximate locations
1000-meter Universal Transverse Mercator grid ticks,
zone 12, shown in blue



ROAD CLASSIFICATION

Heavy-duty	4 LANE 6 LANE	Light-duty
Medium-duty	2 LANE 6 LANE	Unimproved dirt
U. S. Route		State Route



SEP 28 1973
WALLROCK, MONT.
N4600-W11045/7.5
1951
AMS 3876 III SE-SERIES V894

THIS MAP COMPLIES WITH NATIONAL MAP ACCURACY STANDARDS
FOR SALE BY U.S. GEOLOGICAL SURVEY, DENVER, COLORADO 80225, OR WASHINGTON, D.C. 20242
A FOLDER DESCRIBING TOPOGRAPHIC MAPS AND SYMBOLS IS AVAILABLE ON REQUEST

195