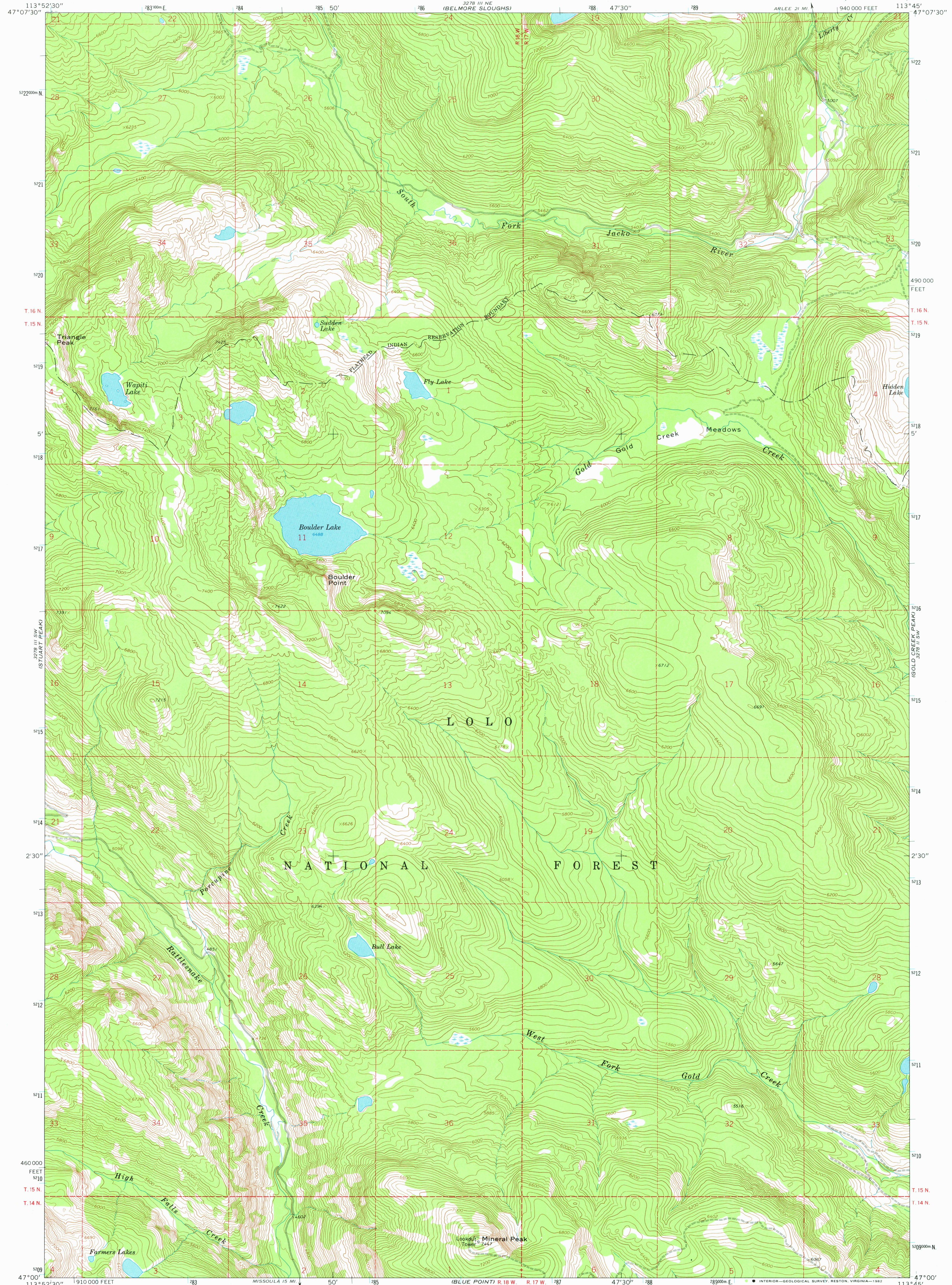


UNITED STATES  
DEPARTMENT OF THE INTERIOR  
GEOLOGICAL SURVEY

WAPITI LAKE QUADRANGLE  
MONTANA—MISSOULA CO.  
7.5 MINUTE SERIES (TOPOGRAPHIC)



Mapped, edited, and published by the Geological Survey

Control by USGS and USC&GS

Topography by photogrammetric methods from aerial

photographs taken 1964. Field checked 1965

Polyconic projection. 1927 North American datum

10,000-foot grid based on Montana coordinate system,

central zone 1000-meter Universal Transverse Mercator grid ticks,

zone 12, shown in blue

Where omitted, land lines have not been established

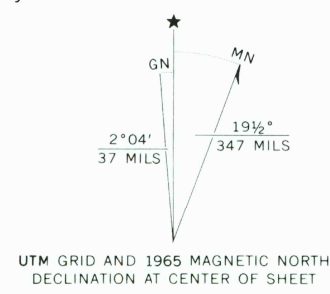
To place on the predicted North American Datum 1983

move the projection lines 11 meters north and

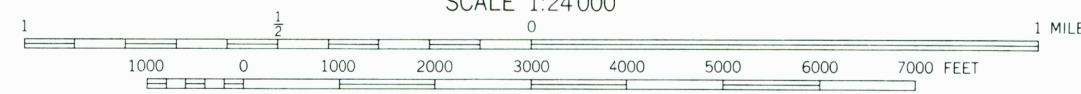
69 meters east as shown by dashed corner ticks

There may be private inholdings within the boundaries of the

National or State reservations shown on this map



UTM GRID AND 1965 MAGNETIC NORTH  
DECLINATION AT CENTER OF SHEET



SCALE 1:24,000

CONTOUR INTERVAL 40 FEET

NATIONAL GEODETIC VERTICAL DATUM OF 1929

THIS MAP COMPLIES WITH NATIONAL MAP ACCURACY STANDARDS  
FOR SALE BY U. S. GEOLOGICAL SURVEY, DENVER, COLORADO 80225, OR RESTON, VIRGINIA 22092  
A FOLDER DESCRIBING TOPOGRAPHIC MAPS AND SYMBOLS IS AVAILABLE ON REQUEST

ROAD CLASSIFICATION  
Light-duty ————— Unimproved dirt =====



QUADRANGLE LOCATION  
Map photoinspected 1976  
No major culture or drainage changes observed

WAPITI LAKE, MONT.  
N4700—W11345/7.5

1965  
PHOTOINSPECTED 1976  
DMA 3278 III SE—SERIES Y894

APR 27 1982

RETURN TO:  
USGS NMD HISTORICAL MAP ARCHIVE

1300