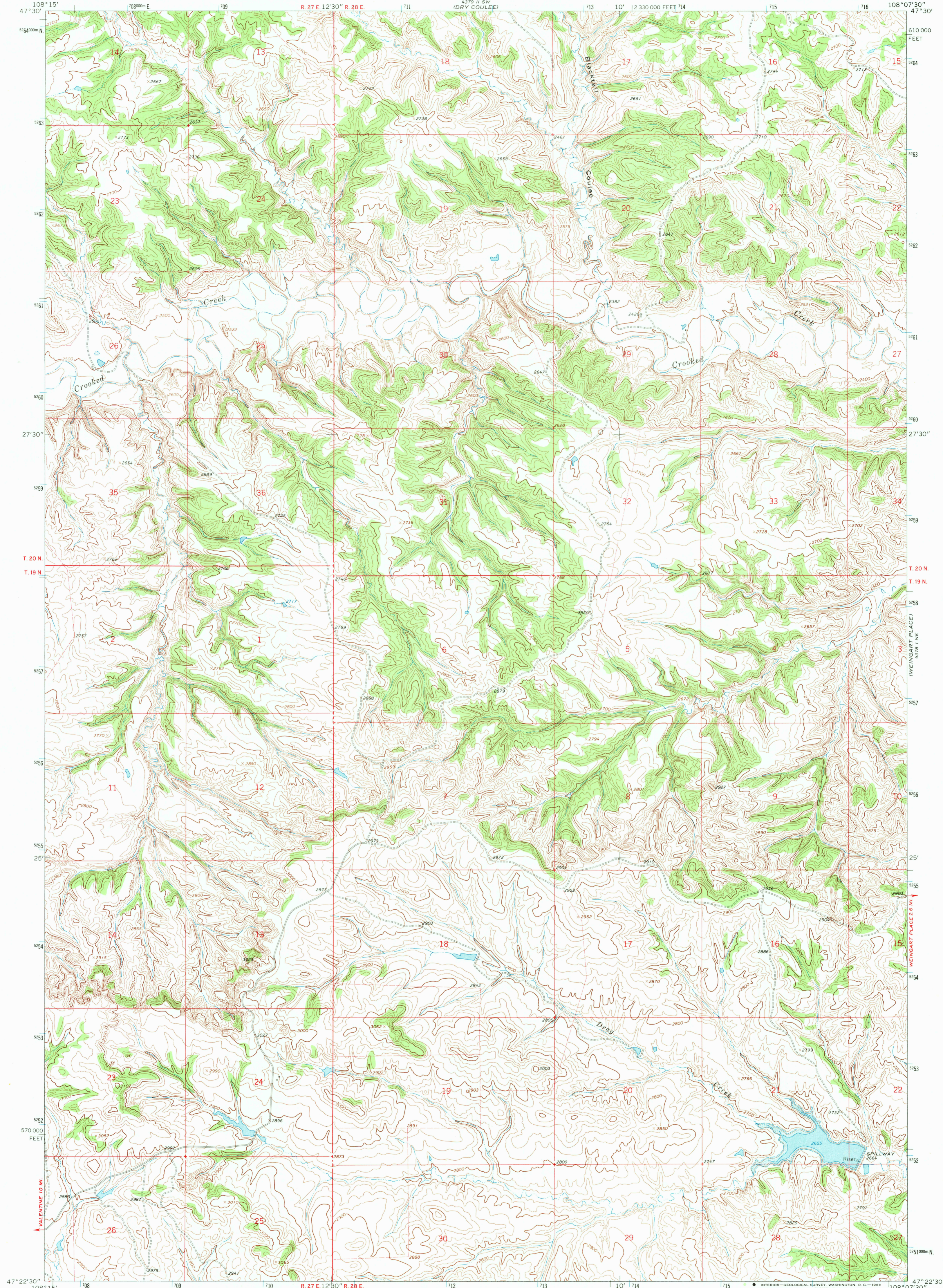
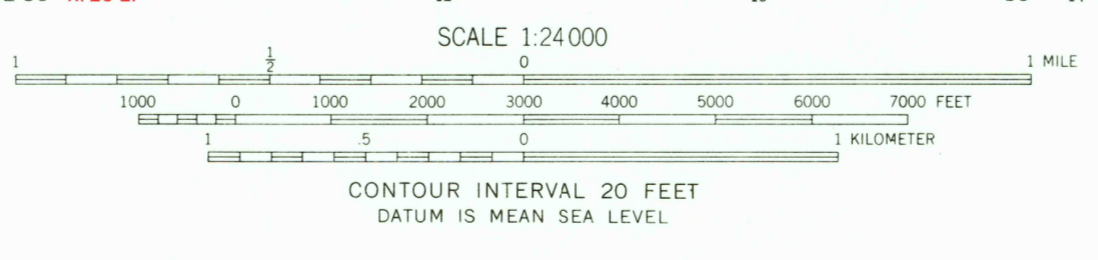


47° 19' 30" N  
CHAIN BUTTES



47° 22' 30" N 108° 15' W 2 310 000 FEET R. 27 E. 12° 30' R. 28 E. 711 712 713 10' 714 715 108° 07' 30" W 47° 30" N

Mapped, edited, and published by the Geological Survey as part of the Department of the Interior program for the development of the Missouri River Basin  
Control by USGS and USC&GS  
Topography by photogrammetric methods from aerial photographs taken 1964. Field checked 1965.  
Polyconic projection. 1927 North American datum  
10,000-foot grids based on Montana coordinate system, central zone  
1000-meter Universal Transverse Mercator grid ticks, zone 12, shown in blue  
Fine red dashed lines indicate selected fence lines  
Areas covered by dashed light-blue pattern are subject to controlled inundation



ROAD CLASSIFICATION  
Light-duty ——— Unimproved dirt - - - - -

THIS MAP COMPLIES WITH NATIONAL MAP ACCURACY STANDARDS  
FOR SALE BY U. S. GEOLOGICAL SURVEY, DENVER, COLORADO 80225, OR WASHINGTON, D. C. 20242  
A FOLDER DESCRIBING TOPOGRAPHIC MAPS AND SYMBOLS IS AVAILABLE ON REQUEST

WEINGART PLACE NW, MONT.  
N4722.5 - W10807.5/7.5

1965  
AMS 4378 1 NW - SERIES V894

U.S.G.S.  
FILE COPY  
TOPOGRAPHIC DIVISION

2800  
OCT 16 1969