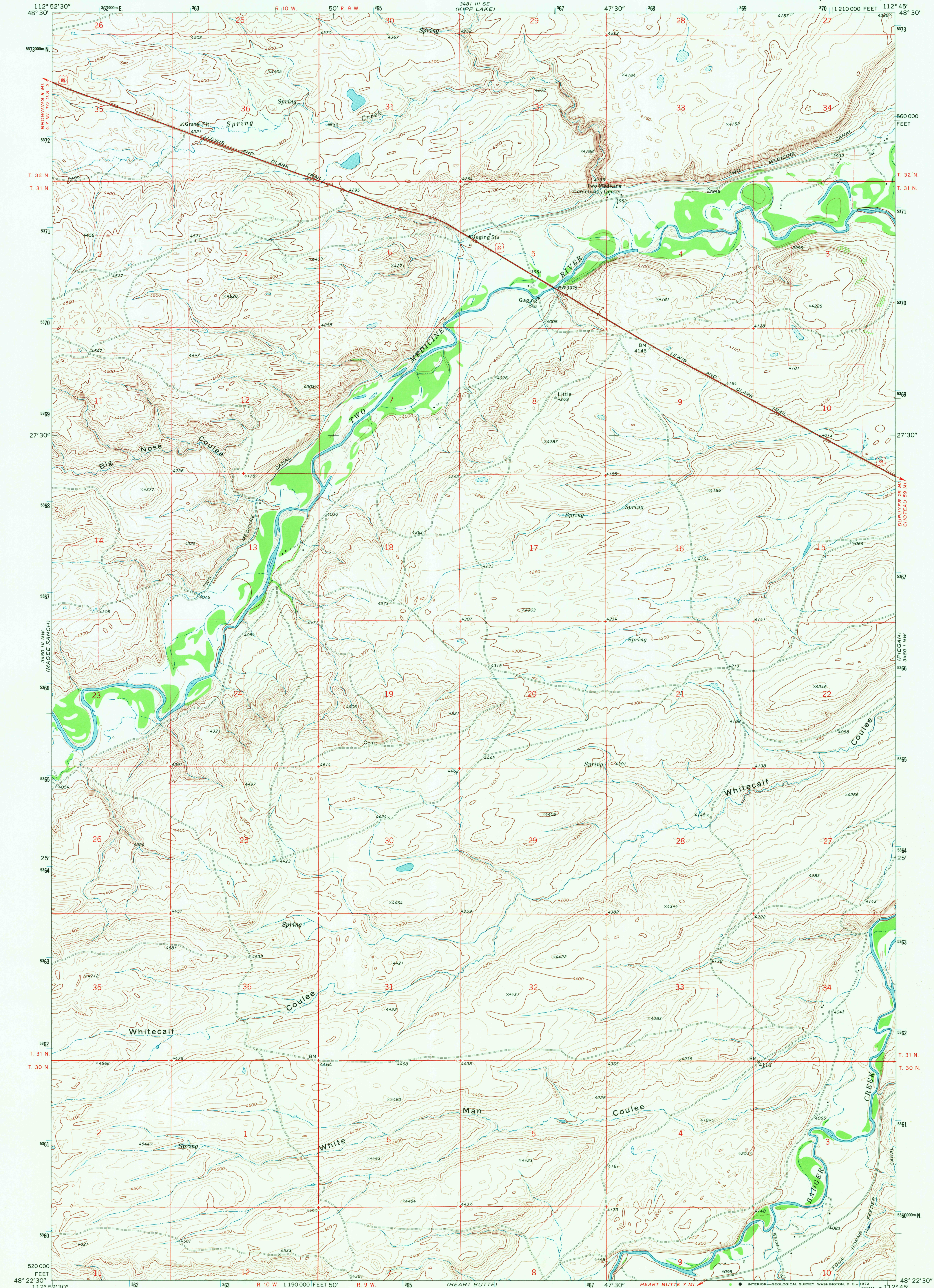


UNITED STATES
DEPARTMENT OF THE INTERIOR
GEOLOGICAL SURVEY

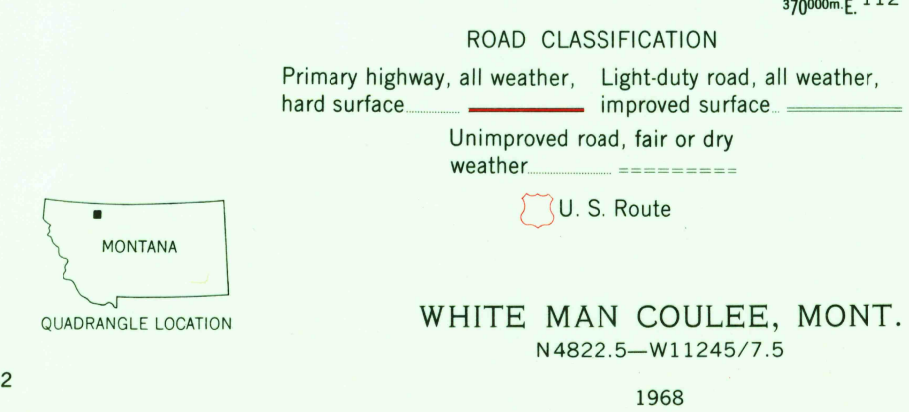
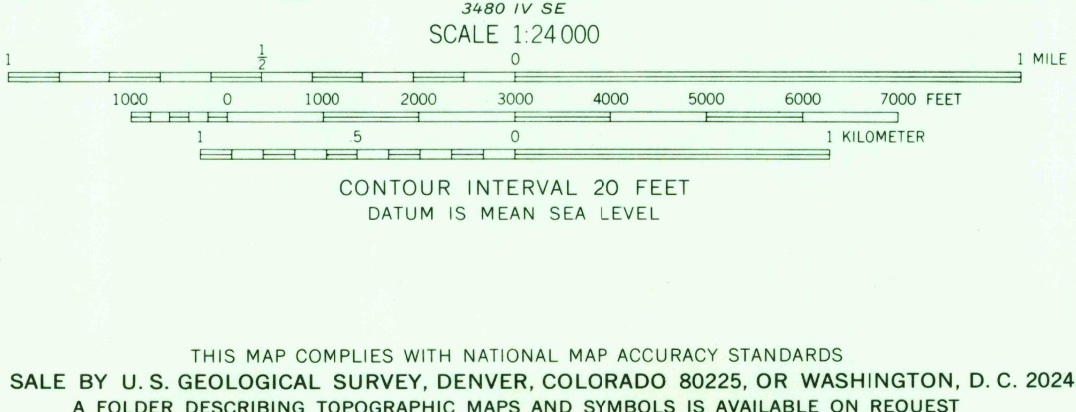
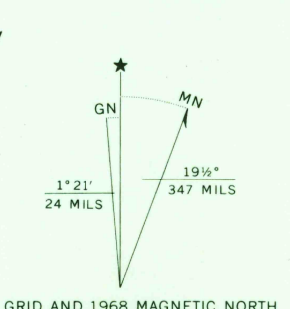
WHITE MAN COULEE QUADRANGLE
MONTANA—GLACIER CO.
7.5 MINUTE SERIES (TOPOGRAPHIC)

348 IV SW
(BLACKFOOT)

348 IV SW
(MISSION LAKE WEST)



Mapped, edited, and published by the Geological Survey
Control by USGS and USC&GS
Topography by photogrammetric methods from aerial
photographs taken 1966. Field checked 1968
Polyconic projection. 1927 North American datum
10,000-foot grid based on Montana coordinate system,
north zone
1000-meter Universal Transverse Mercator grid ticks,
zone 12, shown in blue
Fine red dashed lines indicate selected fence lines
Entire area lies within the boundary of the Blackfeet Indian
Reservation



USGS
HISTORICAL FILE
TOPOGRAPHIC DIVISION

SEP 12 1972
2610