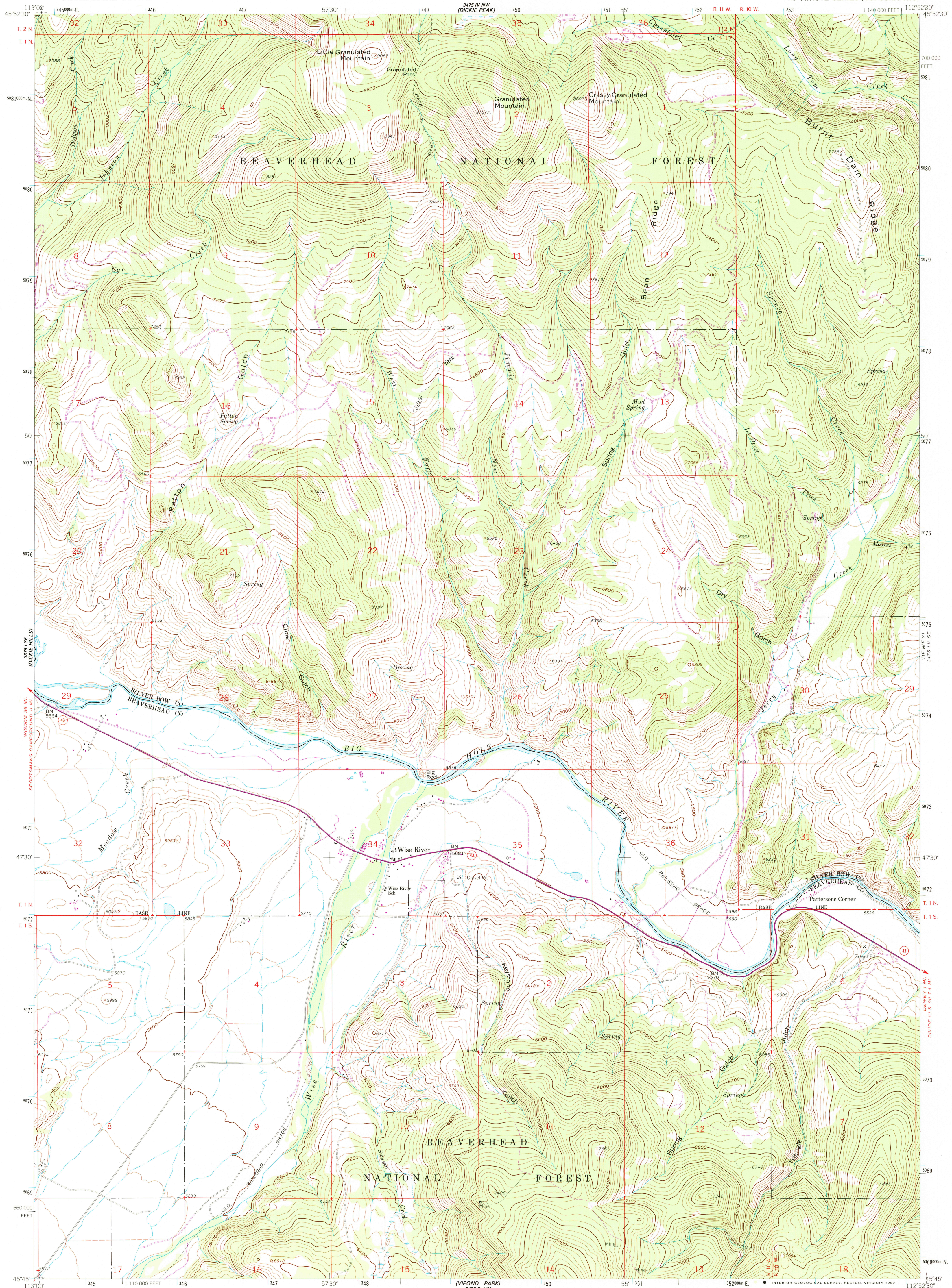
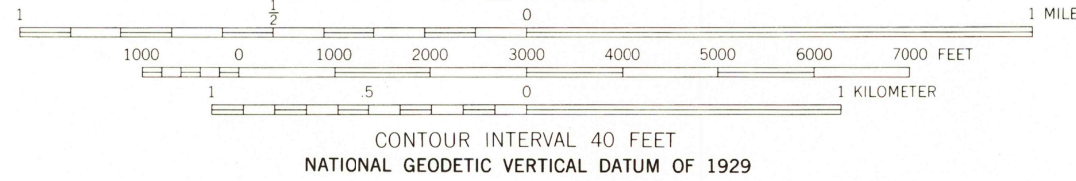
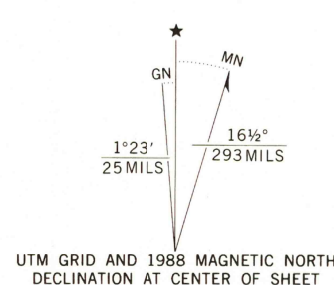


UNITED STATES
DEPARTMENT OF THE INTERIOR
GEOLOGICAL SURVEY

WISE RIVER QUADRANGLE
MONTANA
7.5 MINUTE SERIES (TOPOGRAPHIC)



Control by USGS and NOS/NOAA
Topography by photogrammetric methods from aerial photographs taken 1956. Field checked 1961
Polyconic projection. 1927 North American Datum
10,000-foot grid based on Montana coordinate system, south zone
1000 meter Universal Transverse Mercator grid ticks, zone 12, shown in blue
Fine red dashed lines indicate selected fence lines
Where omitted, land lines have not been established
To place on the predicted North American Datum 1983
move the projection lines 12 meters north and
68 meters east as shown by dashed corner ticks
There may be private inholdings within the boundaries
of the National or State reservations shown on this map



THIS MAP COMPLIES WITH NATIONAL MAP ACCURACY STANDARDS
FOR SALE BY U. S. GEOLOGICAL SURVEY
DENVER, COLORADO 80225, OR RESTON, VIRGINIA 22092
A FOLDER DESCRIBING TOPOGRAPHIC MAPS AND SYMBOLS IS AVAILABLE ON REQUEST



ROAD CLASSIFICATION
Primary highway, hard surface
Unimproved dirt
State Route

WISE RIVER, MONT.
45112-G8-TF-024
1961
PHOTOREVISED 1988
DMA 3475 IV SW-SERIES V894

USGS NMD HISTORICAL MAP
MAR 23 1989
REC'D FILE COPY