

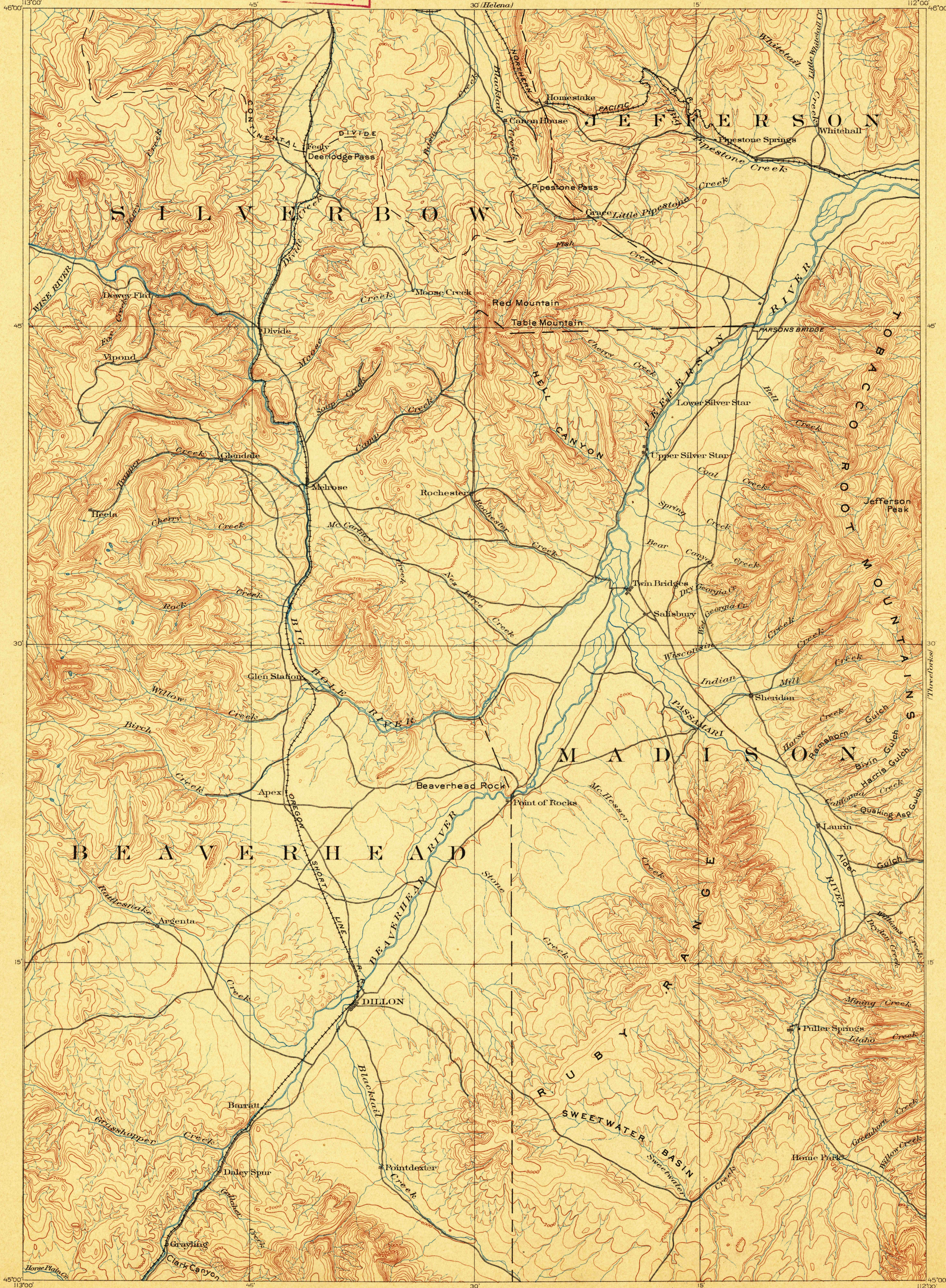
U. S. G. S.
FILE COPY
Topographic Maps.

U.S. GEOLOGICAL SURVEY
J. W. POWELL, DIRECTOR

RECONNAISSANCE MAP

MONTANA
DILLON SHEET

(Not Logan)



Henry Gannett, Chief Geographer.
A.H. Thompson, Geographer in charge.
Triangulation by E.M. Douglas.
Topography by Frank Tweedy and Northern Transcontinental Survey.
Surveyed in 1887-88.

Tweedy

Scale 250000
0 2 4 6 8 10 Miles
Contour interval 200 feet.
Datum is mean sea level.

Edition of Oct. 1893, reprinted Dec. 1901.

U.S. Geological Survey,
DEC 31 1901 1061
Ed. Div. Topographic Maps.

USGS
Historical File
Topographic Division

Dillon, Mont