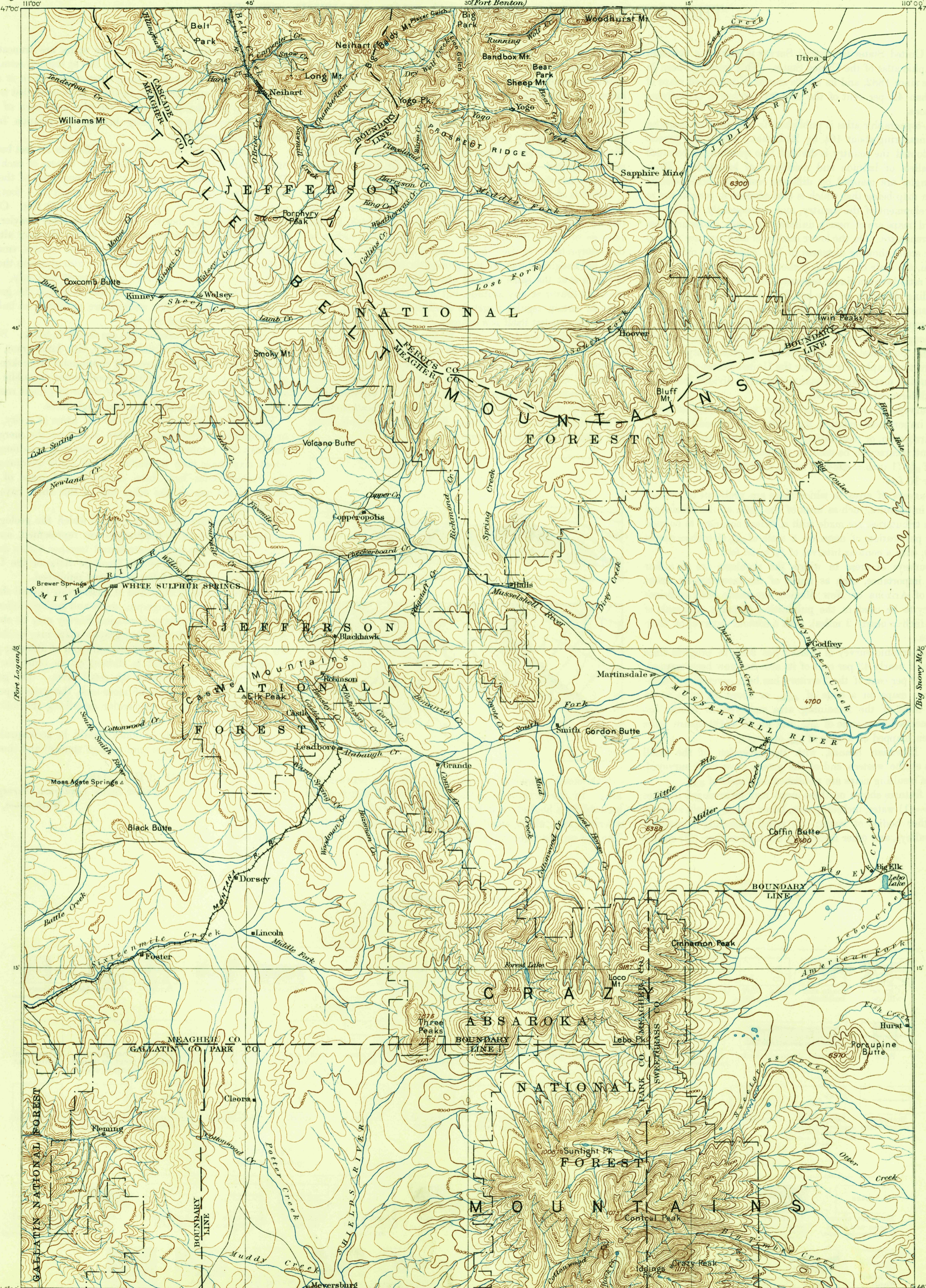


U. S. G. S.  
FILE COPY  
Inspection and Editing.

DEPARTMENT OF THE INTERIOR  
U. S. GEOLOGICAL SURVEY

RECONNAISSANCE MAP

MONTANA  
LITTLE BELT MTS. QUADRANGLE



U. S. G. S.  
FILE COPY  
Inspection and Editing.

U. S. G. S.  
FILE COPY  
Inspection and Editing.

USGS  
Historical File  
Topographic Division

(Three Forks)  
E. M. Douglas, Topographer in charge.  
Triangulation by Northern Transcontinental Survey.  
Topography by Northern Transcontinental Survey  
and R. H. Chapman.  
Surveyed in 1882 and 1896.

Scale 250,000  
10 Miles  
10 Kilometers  
Contour interval 200 feet.  
Datum is mean sea level.

U. S. G. S.  
FILE COPY  
Inspection and Editing.

Edition of 1902, reprinted 1932  
Polyconic projection.

MONT.  
LITTLE BELT MTS  
AUG 11 1932 (2070)