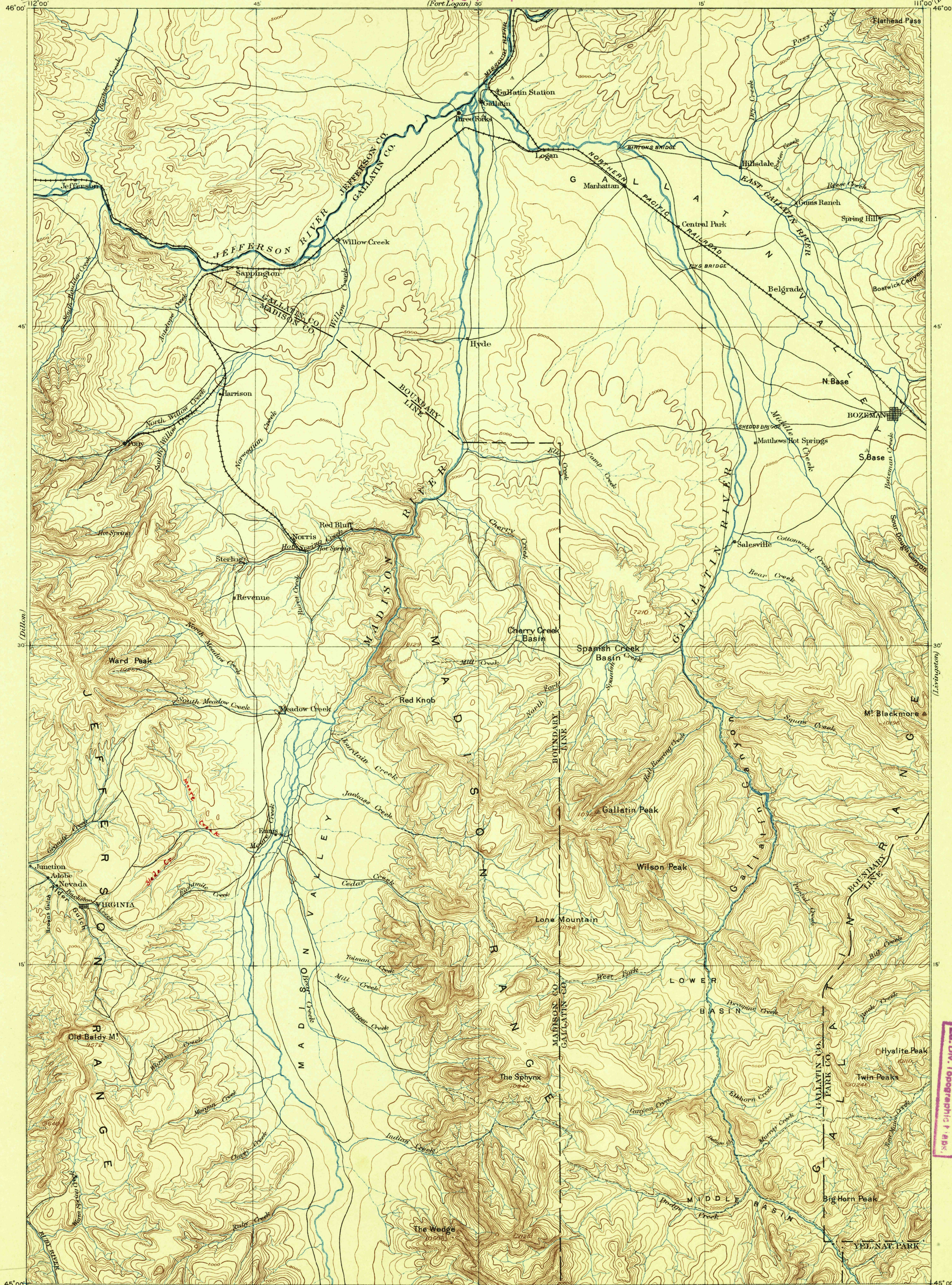


U. S. G. S.
FILE COPY
Editor of Topographic Maps.
(Fort Logan) 30'

MONTANA — YEL. NAT.
THREE FORKS SHEET

U.S. GEOLOGICAL SURVEY.
CHARLES D. WALCOTT, DIRECTOR.



U. S. G. S.
FILE COPY
Ed. Div. Topographic Maps

U. S. G. S.
FILE COPY
Ed. Div. Topographic Maps

Henry Gannett, Chief Geographer.
A.H. Thompson, Geographer in charge.
Triangulation by J.H. Renshaw and E.M. Douglas.
Topography by the Northern Transcontinental Survey
and Frank Tweedy.
Surveyed in 1886.

N.T. Survey
E. Tweedy

U. S. G. S.
FILE COPY
Ed. Div. Topographic Maps.

Scale 250,000
0 1 2 3 4 5 6 7 8 9 10 Miles
0 2 4 6 8 10 Kilometers
Contour Interval 200 feet
Datum is mean Sea level

USGS
Historical File
Topographic Division

Edition of May 1895. 600 600

Mont
Three Forks