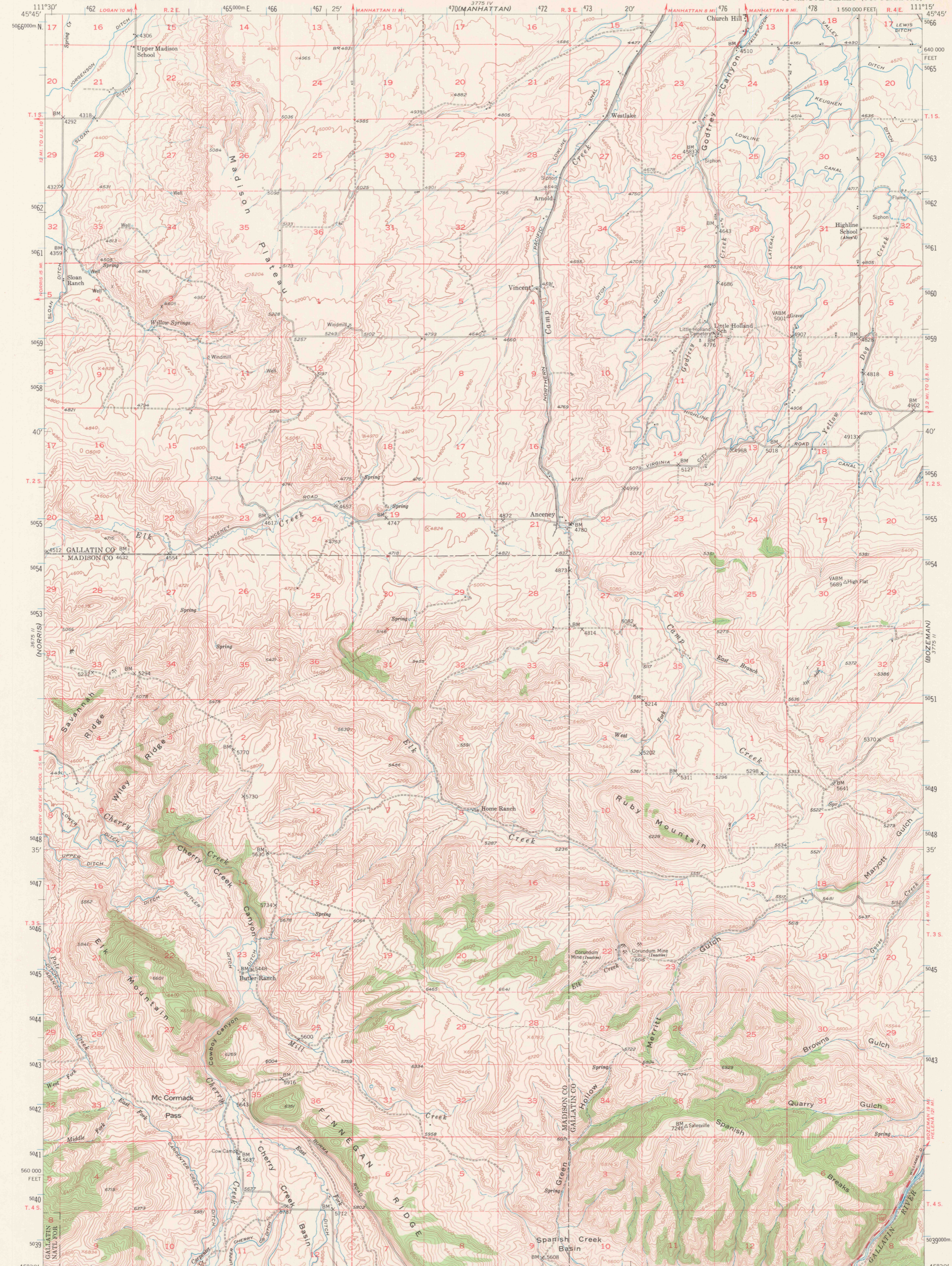


UNITED STATES
DEPARTMENT OF THE INTERIOR
GEOLOGICAL SURVEY

ANCENEY QUADRANGLE
MONTANA
15 MINUTE SERIES (TOPOGRAPHIC)



Stereo compilation by Fairchild Aerial Surveys, Inc. for the Bureau of Reclamation. Field examination and publication by the Geological Survey as part of the Department of the Interior program for the development of the Missouri River Basin.

Control by USGS and USCGS

Topography compiled from aerial photographs by stereoplano-graph methods 1948

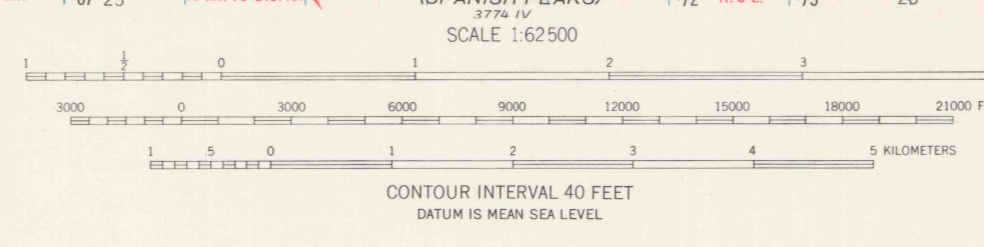
Aerial photographs taken 1947. Field check 1949

Polyconic projection, 1927 North American datum 10,000-foot grid based on Montana coordinate system, south zone

Unchecked elevations are shown in brown

Dashed land lines indicate approximate locations

1000-meter Universal Transverse Mercator grid ticks, zone 12, shown in blue



THIS MAP COMPLIES WITH NATIONAL MAP ACCURACY STANDARDS
FOR SALE BY U. S. GEOLOGICAL SURVEY, DENVER, COLORADO 80225 OR WASHINGTON, D. C. 20242
A FOLDER DESCRIBING TOPOGRAPHIC MAPS AND SYMBOLS IS AVAILABLE ON REQUEST

ANCENEY, MONT.
N4530-W11115/15
1949
AMS 3775 III-SERIES V794