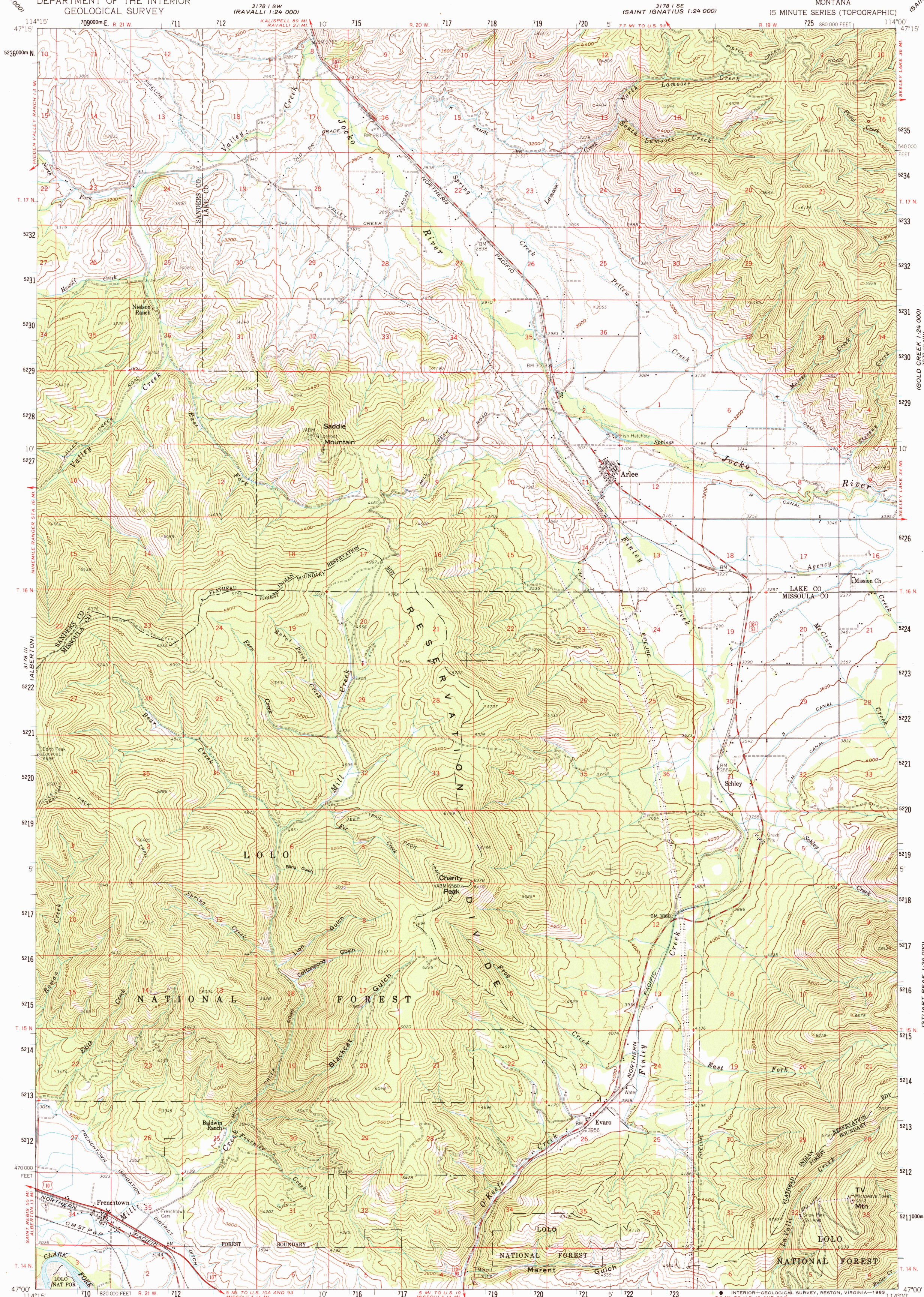
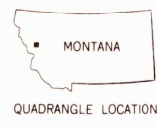
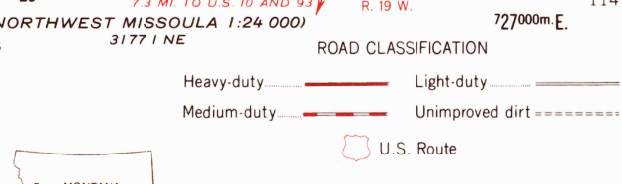
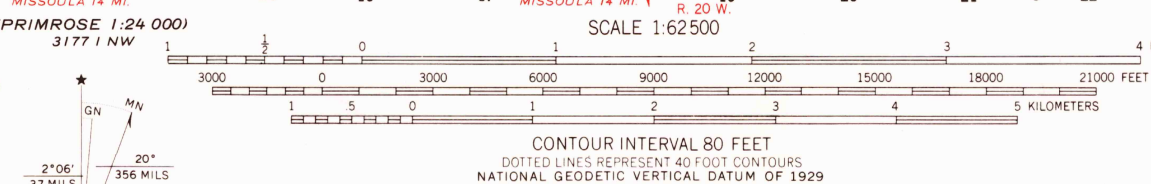


UNITED STATES
DEPARTMENT OF THE INTERIOR
GEOLOGICAL SURVEY

ARLEE QUADRANGLE
MONTANA
15 MINUTE SERIES (TOPOGRAPHIC)



Maped, edited, and published by the Geological Survey
Control by USGS and USCGS
Topography from aerial photographs by photogrammetric methods
Aerial photographs taken 1956. Field check 1959
Polyconic projection. 1927 North American datum
10,000 foot grid based on Montana coordinate system,
central zone
1000 meter Universal Transverse Mercator grid ticks,
zone 11, shown in blue
To place on the predicted North American Datum 1983 move
the projection lines 12 meters north and 70 meters east
There may be private inholdings within the boundaries of the
National or State reservations shown on this map



ARLEE, MONT.
N4700-W11400/15
1959
DMA 3178 II-SERIES V794

RETURN TO:
USGS AND HISTORICAL MAP ARCHIVES