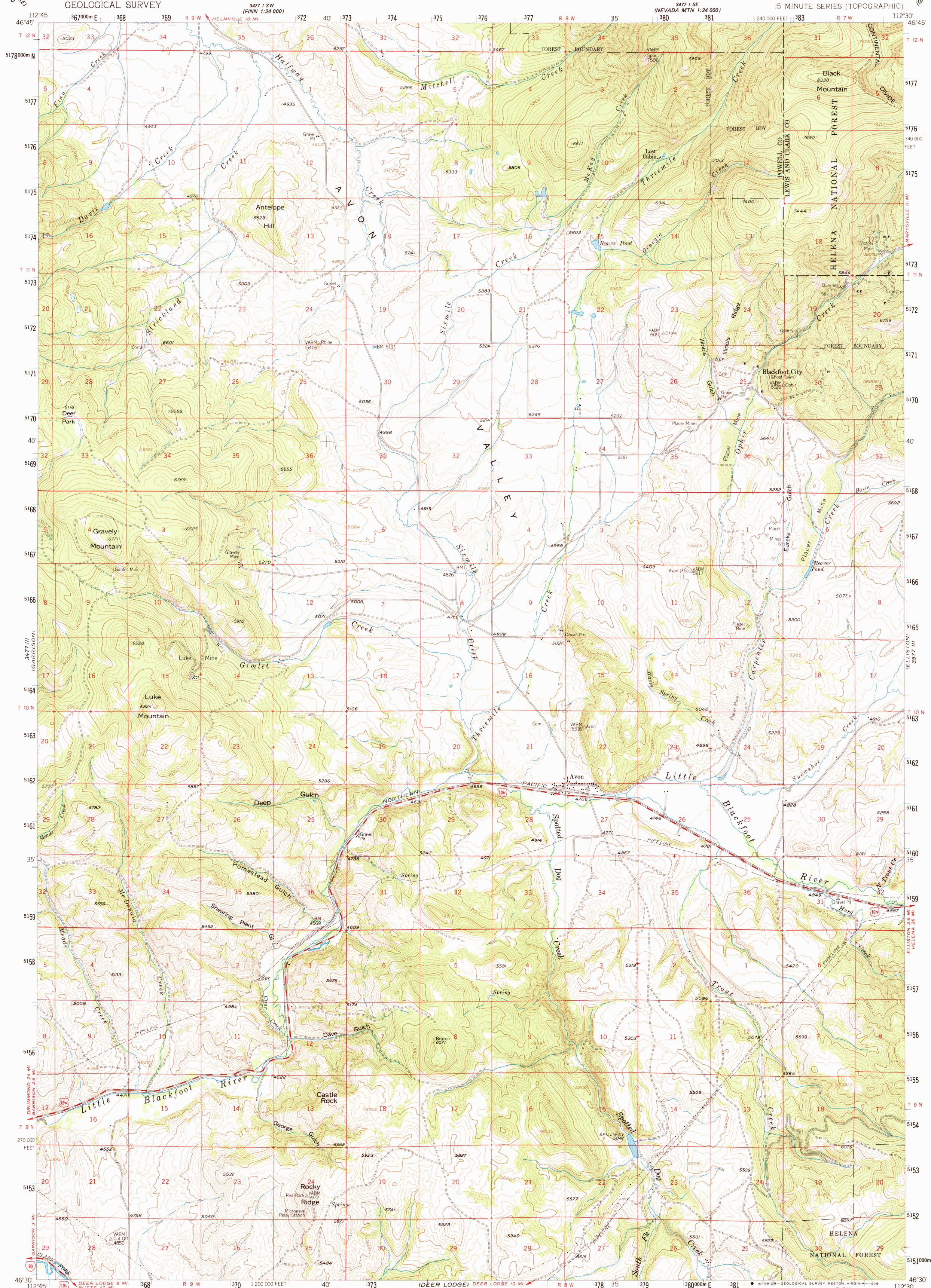


3671 N.E.  
(MONTANA)  
1:24,000

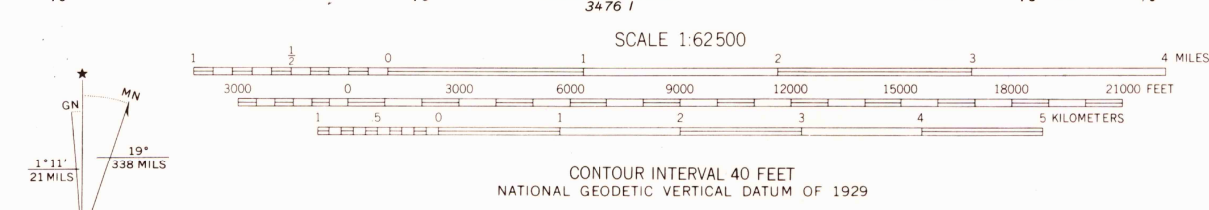
UNITED STATES  
DEPARTMENT OF THE INTERIOR  
GEOLOGICAL SURVEY

AVON QUADRANGLE  
MONTANA  
15 MINUTE SERIES (TOPOGRAPHIC)

3671 N.E.  
(MONTANA)  
1:24,000



Maped, edited, and published by the Geological Survey  
Control by USGS, USC&GS  
Topography from aerial photographs by photogrammetric methods  
Aerial photographs taken 1954-1955. Field check 1958  
Polyconic projection, 1927 North American datum  
10,000-foot grid based on Montana coordinate system,  
central zone  
1000-meter Universal Transverse Mercator grid ticks,  
zone 12, shown in blue  
Unchecked elevations are shown in brown  
There may be private inholdings within the boundaries of  
the National or State reservations shown on this map



THIS MAP COMPLIES WITH NATIONAL MAP ACCURACY STANDARDS  
FOR SALE BY U. S. GEOLOGICAL SURVEY, DENVER, COLORADO 80225, OR RESTON, VIRGINIA 22092  
A FOLDER DESCRIBING TOPOGRAPHIC MAPS AND SYMBOLS IS AVAILABLE ON REQUEST

AVON, MONT.  
N4630-W11230/15  
1958  
DMA 3477 II-SERIES V794  
RETURN TO:  
NMD HISTORICAL MAP ARCHIVES  
USGS NATIONAL CENTER, MS-522  
RESTON, VA 22092