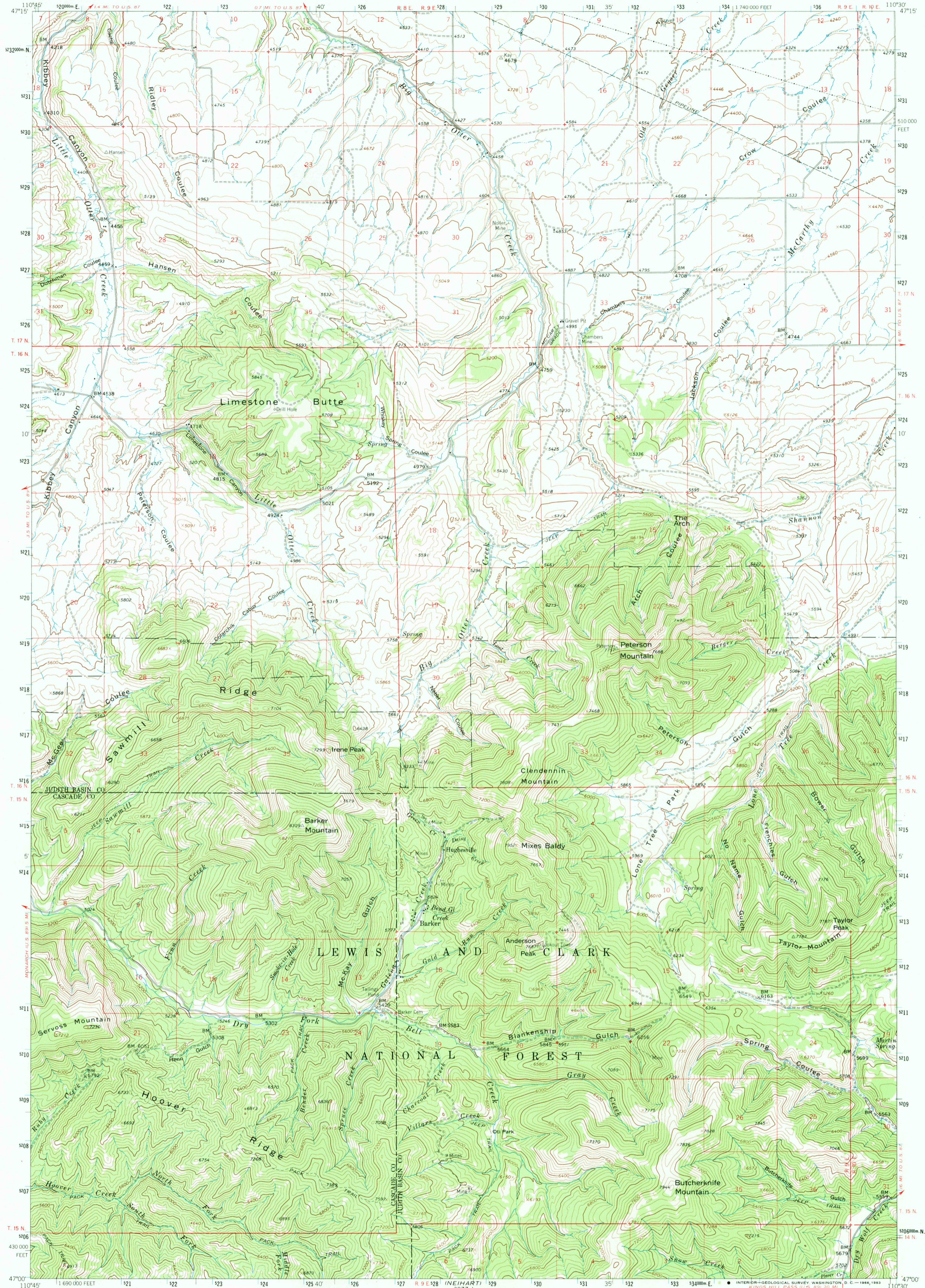


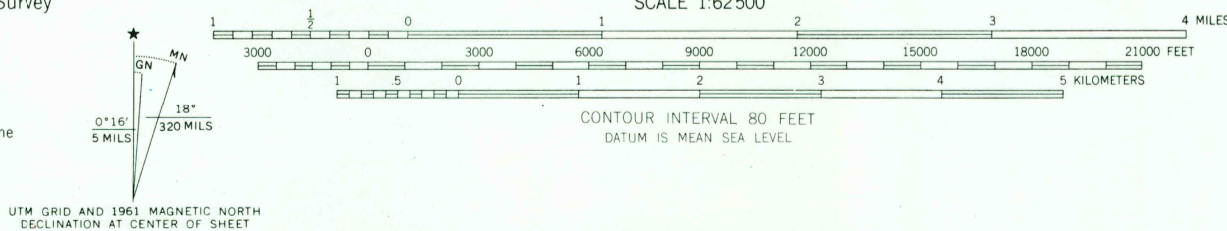
1961
1:62,500

UNITED STATES
DEPARTMENT OF THE INTERIOR
GEOLOGICAL SURVEY

BARKER QUADRANGLE
MONTANA
15 MINUTE SERIES (TOPOGRAPHIC)



Mapped, edited, and published by the Geological Survey
 Control by USGS and USC&GS
 Topography by photogrammetric methods from aerial
 photographs taken 1958. Field checked 1961
 Polyconic projection. 1927 North American datum
 10,000-foot grid based on Montana coordinate system, central zone
 1000-meter Universal Transverse Mercator grid ticks,
 zone 12, shown in blue
 Where omitted, land lines have not been established



ROAD CLASSIFICATION
 Light-duty ————— Unimproved dirt - - - - -



This area also covered by 7.5-minute 1:24,000 scale
 maps: The Arch 1951, Limestone Butte 1961,
 Barker 1961, and Mixes Baldy 1961

BARKER, MONT.
 N4700-W11030/15

1961

AMS 3878 11-SERIES V794

THIS MAP COMPLIES WITH NATIONAL MAP ACCURACY STANDARDS
 FOR SALE BY U.S. GEOLOGICAL SURVEY, DENVER, COLORADO 80225, OR WASHINGTON, D. C. 20242
 A FOLDER DESCRIBING TOPOGRAPHIC MAPS AND SYMBOLS IS AVAILABLE ON REQUEST