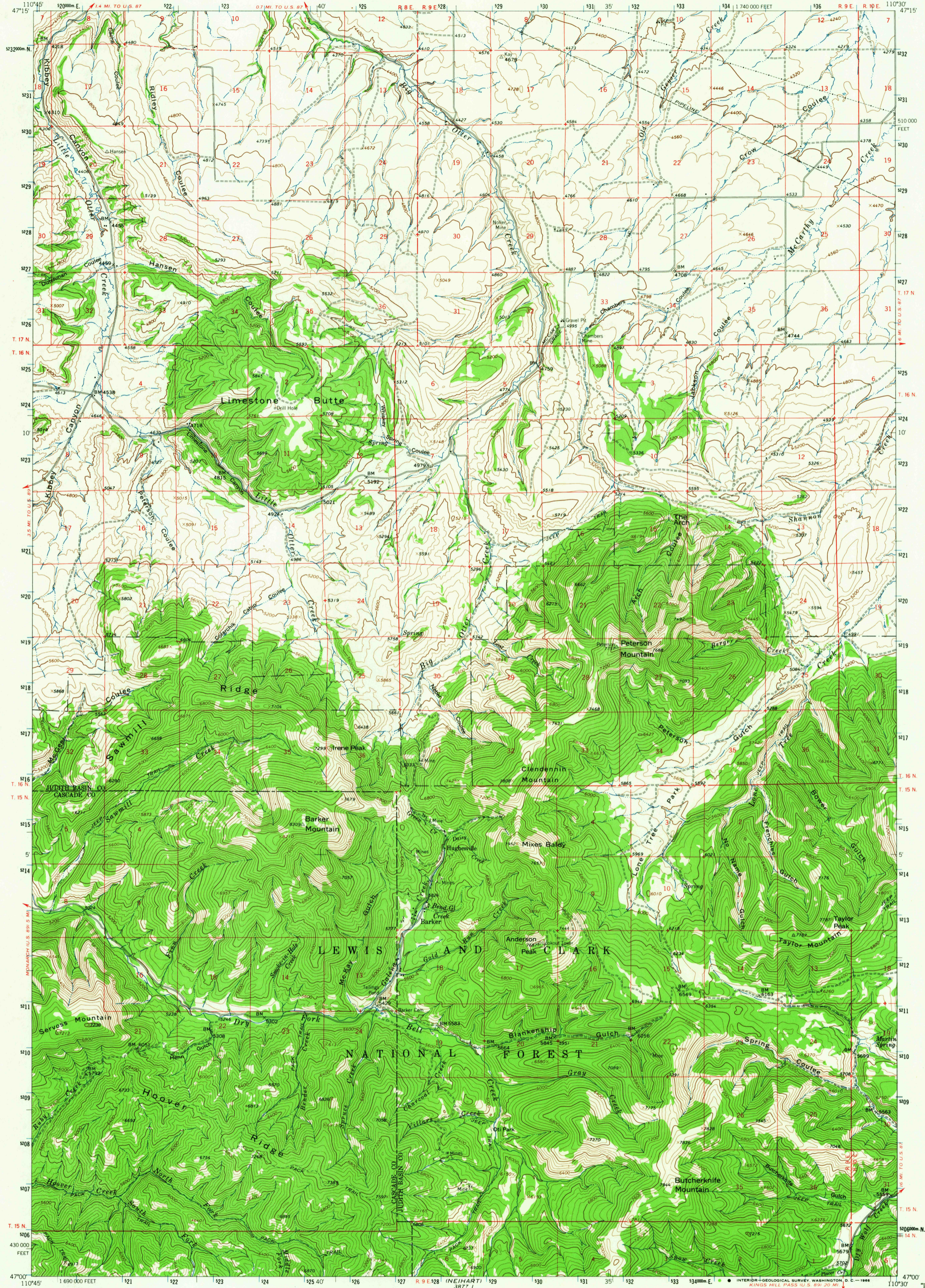


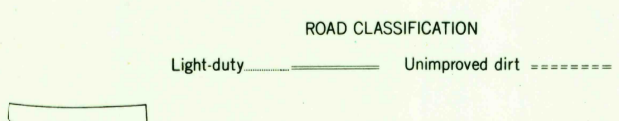
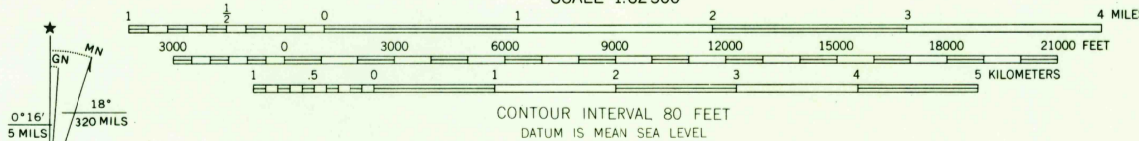
3878 11
110°45'

UNITED STATES
DEPARTMENT OF THE INTERIOR
GEOLOGICAL SURVEY

BARKER QUADRANGLE
MONTANA
15 MINUTE SERIES (TOPOGRAPHIC)



Mapped, edited, and published by the Geological Survey
Control by USGS and USC&GS
Topography by photogrammetric methods from aerial photographs taken 1958. Field checked 1961.
Polyconic projection. 1927 North American datum. 10,000-foot grid based on Montana coordinate system, central zone 1000-meter Universal Transverse Mercator grid ticks, zone 12, shown in blue.
Where omitted, land lines have not been established.



This area also covered by 7.5 minute 1:24,000-scale maps: The Arch 1961, Limestone Butte 1961, Barker 1961, and Mixes Baldy 1961.

THIS MAP COMPLIES WITH NATIONAL MAP ACCURACY STANDARDS
FOR SALE BY U.S. GEOLOGICAL SURVEY, DENVER, COLORADO 80225, OR WASHINGTON, D.C. 20242
A FOLDER DESCRIBING TOPOGRAPHIC MAPS AND SYMBOLS IS AVAILABLE ON REQUEST

BARKER, MONT.
N4700-W11030/15
1961
AMS 3878 11-SERIES V794

U.S.G.S. TOPOGRAPHIC DIVISION

USGS
Historical File
Topographic Division

2120

JUL 8 '66

506 COPY
TOPOGRAPHIC DIVISION