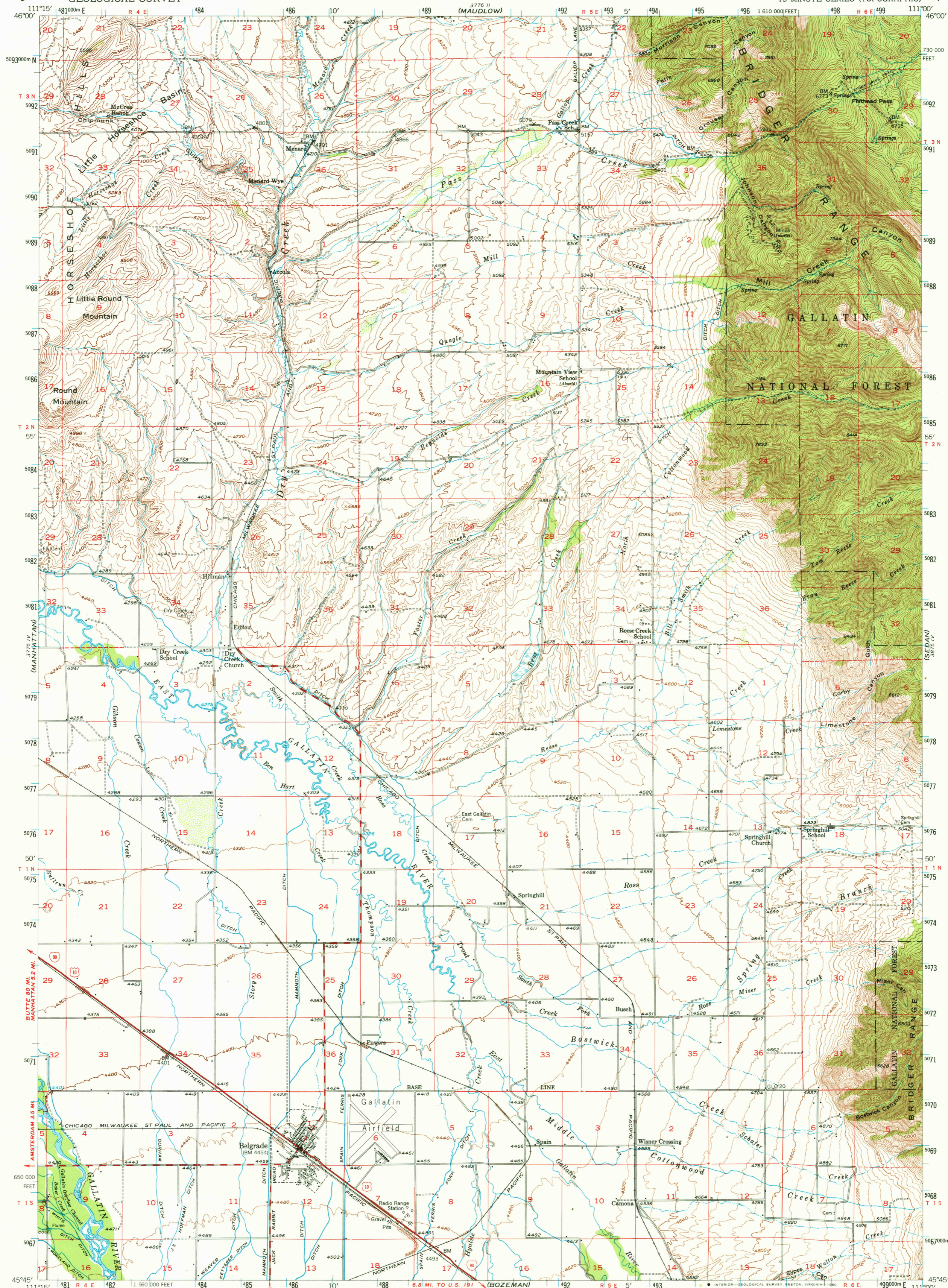


UNITED STATES
DEPARTMENT OF THE INTERIOR
GEOLOGICAL SURVEY

BELGRADE QUADRANGLE
MONTANA-GALLATIN CO.
15 MINUTE SERIES (TOPOGRAPHIC)



Stereo compilation by Fairchild Aerial Surveys, Inc. for the Bureau of Reclamation. Field examination and publication by the Geological Survey as part of the Department of the Interior program for the development of the Missouri River Basin. Control by USGS and USC&GS. Topography from aerial photographs by stereoplanigraph methods 1948. Aerial photographs taken 1947. Field check 1948-1950. Polyconic projection. 1927 North American datum. 10,000-foot grid based on Montana coordinate system, south zone. Unchecked elevations are shown in brown. Dashed land lines indicate approximate locations. 1000-meter Universal Transverse Mercator grid ticks, zone 12, shown in blue. To place on the predicted North American Datum 1983 move the projection lines 10 meters north and 62 meters east.



ROAD CLASSIFICATION

Heavy-duty	Light duty
Medium-duty	Unimproved dirt
Interstate Route	U.S. Route

THIS MAP COMPLIES WITH NATIONAL MAP ACCURACY STANDARDS FOR SALE BY U.S. GEOLOGICAL SURVEY, DENVER, COLORADO 80225, OR RESTON, VIRGINIA 20192. A FOLDER DESCRIBING TOPOGRAPHIC MAPS AND SYMBOLS IS AVAILABLE ON REQUEST.

There may be private inholdings within the boundaries of the National or State reservations shown on this map.

BELGRADE, MONT.
N4545-W1100/15
1950
DMA 3775 I-SERIES V794

USGS
Historical File
Topographic Division

AUG - 5 1980
2000