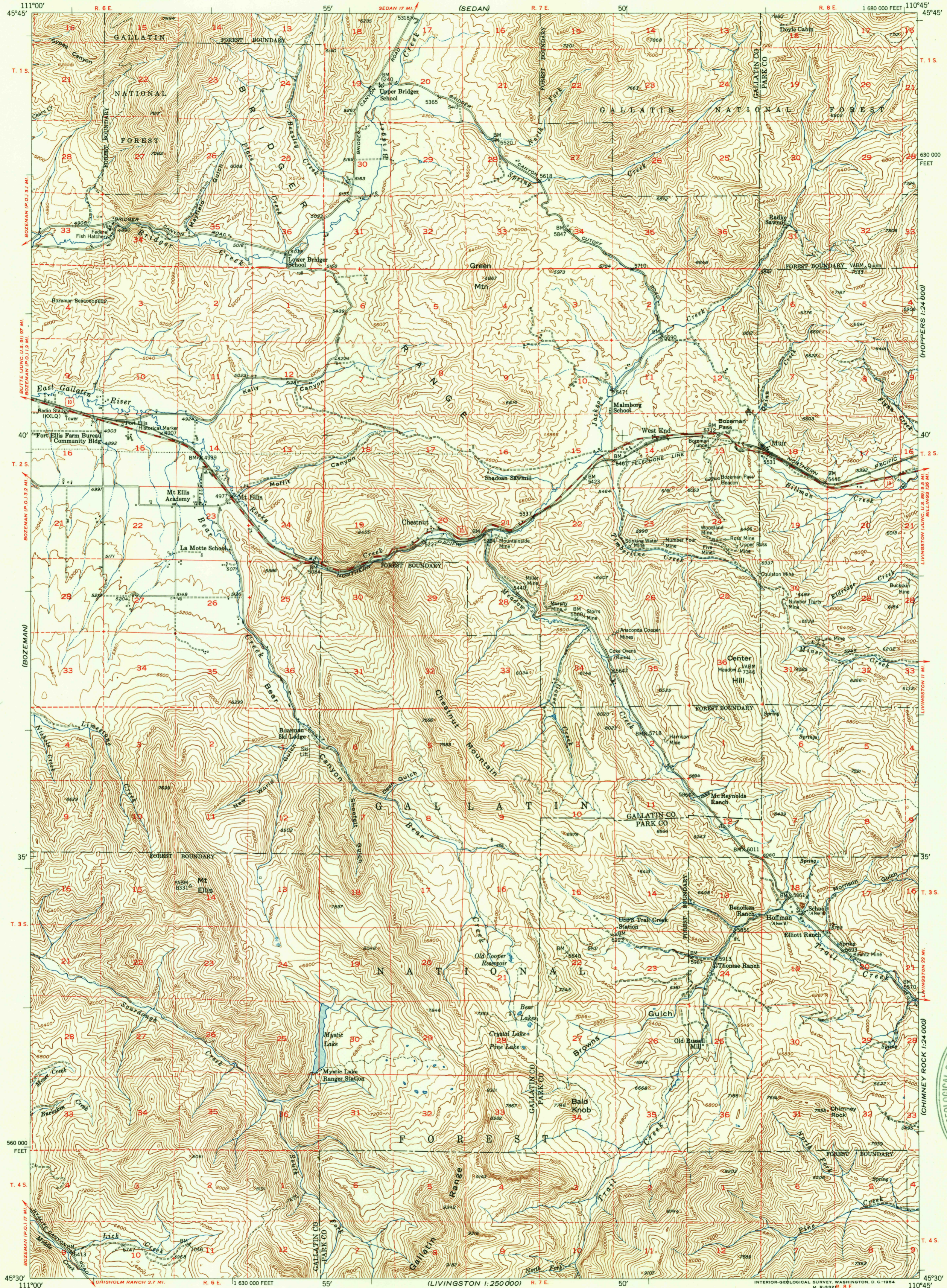


UNITED STATES
DEPARTMENT OF THE INTERIOR
GEOLOGICAL SURVEY

BOZEMAN PASS QUADRANGLE
MONTANA
15 MINUTE SERIES (TOPOGRAPHIC)



Mapped, edited, and published by the Geological Survey as part of the Department of the Interior program for the development of the Missouri River Basin Control by USGS and USC&GS

Topography from aerial photographs by photogrammetric methods. Aerial photographs taken 1948. Field check 1951

Polyconic projection. 1927 North American datum 10,000-foot grid based on Montana coordinate system, south zone

Dashed land lines indicate approximate locations

Unchecked elevations are shown in brown

All mines are inactive

APPROXIMATE MEAN DECLINATION, 1951

TRUE NORTH
MAGNETIC NORTH

SCALE 1:62500

CONTOUR INTERVAL 80 FEET
DATUM IS MEAN SEA LEVEL

ROAD CLASSIFICATION

Heavy-duty 4 LANE 16 LANE Light-duty
Medium-duty 4 LANE 6 LANE Unimproved dirt

U.S. Route State Route

BOZEMAN PASS, MONT.
N4530-W11045/15

1951

THIS MAP COMPLIES WITH NATIONAL MAP ACCURACY STANDARDS
FOR SALE BY U. S. GEOLOGICAL SURVEY, FEDERAL CENTER, DENVER, COLORADO OR WASHINGTON 25, D. C.
COPIES OF THE ORIGINAL DRAWINGS WITH 20 FOOT CONTOURS AVAILABLE
A FOLDER DESCRIBING TOPOGRAPHIC MAPS AND SYMBOLS IS AVAILABLE ON REQUEST

