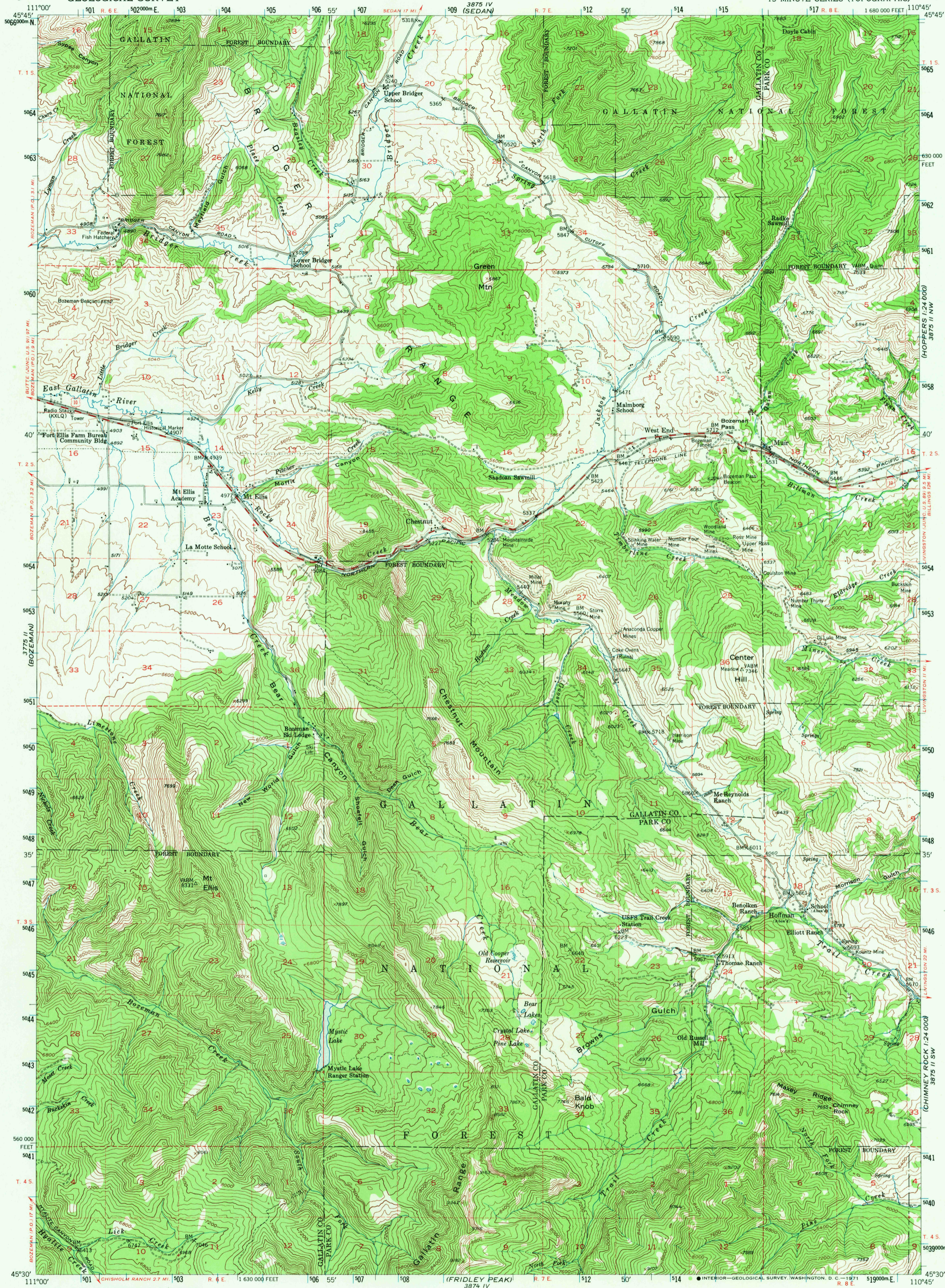
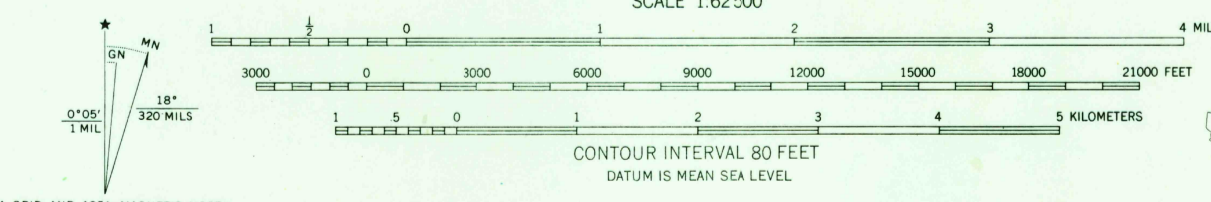


UNITED STATES
DEPARTMENT OF THE INTERIOR
GEOLOGICAL SURVEY

BOZEMAN PASS QUADRANGLE
MONTANA
15 MINUTE SERIES (TOPOGRAPHIC)



Mapped, edited, and published by the Geological Survey as part of the Department of the Interior program for the development of the Missouri River Basin Control by USGS and USC&GS
Topography from aerial photographs by photogrammetric methods. Aerial photographs taken 1948. Field check 1951
Polyconic projection. 1927 North American datum 10,000-foot grid based on Montana coordinate system, south zone
Dashed land lines indicate approximate locations
Unchecked elevations are shown in brown
All mines are inactive
1000-meter Universal Transverse Mercator grid ticks, zone 12, shown in blue



ROAD CLASSIFICATION
Medium-duty ——— Light-duty ———
Unimproved dirt - - - - -
U.S. Route

U.S.G.S.
BOZEMAN PASS, MONT.
N4530-W11045/15
1951
AMS 3875 III—SERIES V794

U.S. GEOLOGICAL SURVEY
WASHINGTON, D. C. 20542

TOPOGRAPHIC DIVISION

3490

JUN 28 1971

USGS
Historical File
Topographic Division

EMERGENCY

BOZEMAN PASS, MONT.
N4530-W11045/15
1951
AMS 3875 III—SERIES V794

U.S. GEOLOGICAL SURVEY
WASHINGTON, D. C. 20542

TOPOGRAPHIC DIVISION

3490

JUN 28 1971