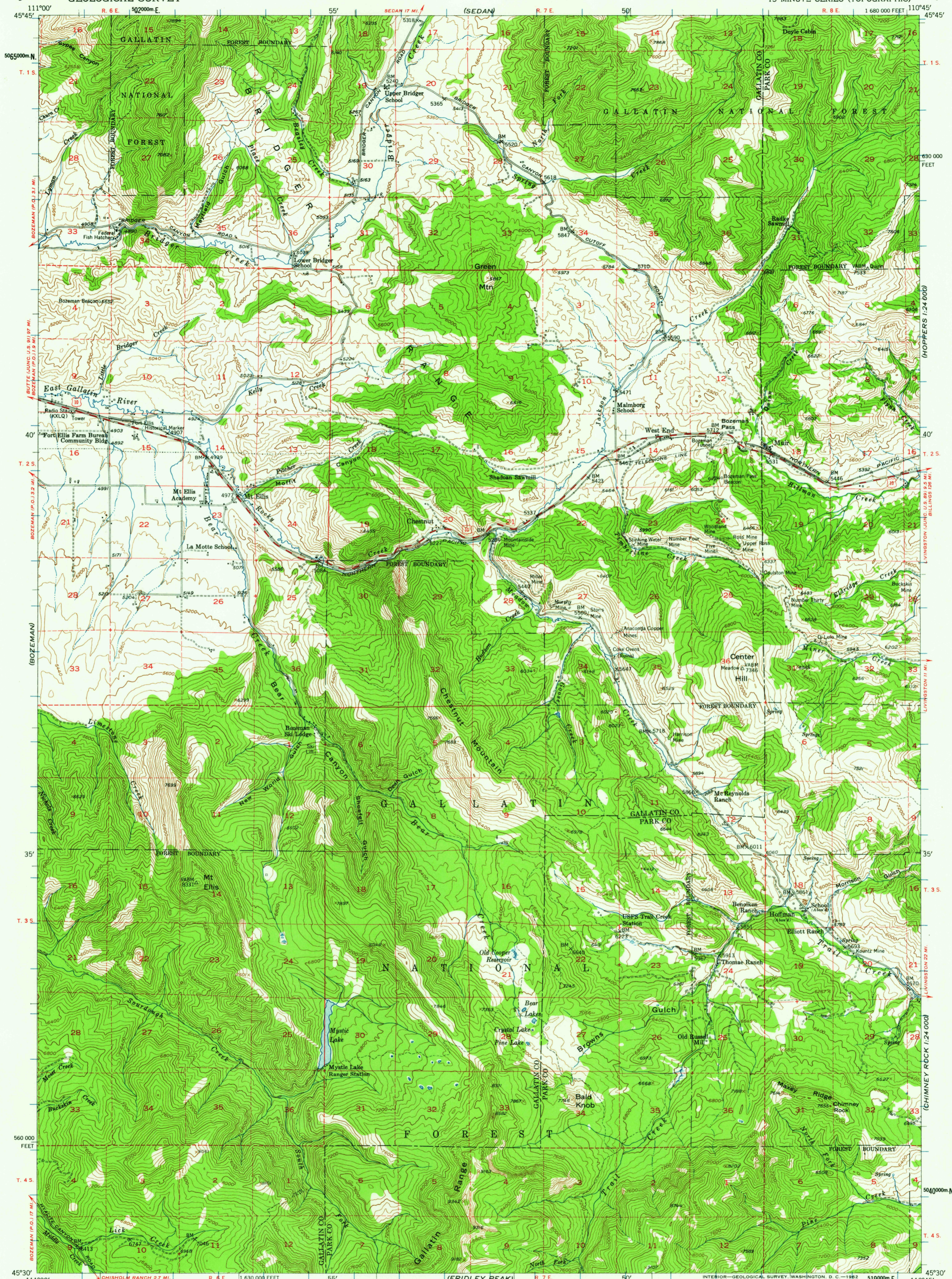


UNITED STATES
DEPARTMENT OF THE INTERIOR
GEOLOGICAL SURVEY

BOZEMAN PASS QUADRANGLE
MONTANA
15 MINUTE SERIES (TOPOGRAPHIC)



Mapped, edited, and published by the Geological Survey as part of the Department of the Interior program for the development of the Missouri River Basin.

Control by USGS and USC&GS

Topography from aerial photographs by photogrammetric methods. Aerial photographs taken 1948. Field check 1951

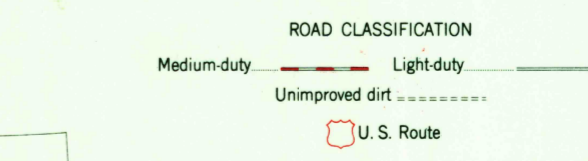
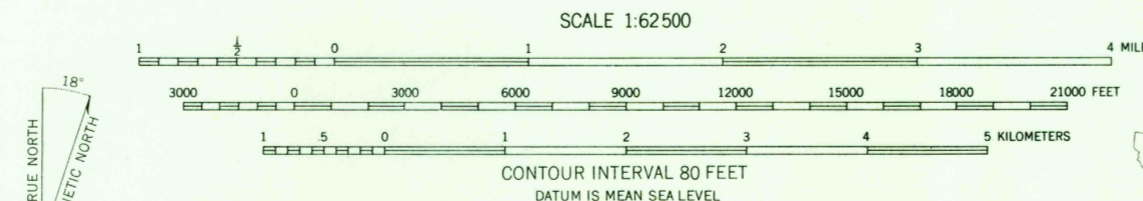
Polycyclic projection. 1927 North American datum. 10,000-foot grid based on Montana coordinate system, south zone

Dashed land lines indicate approximate locations

Unchecked elevations are shown in brown

All mines are inactive

1000-meter Universal Transverse Mercator grid ticks, zone 12, shown in blue



BOZEMAN PASS, MONT.
N4530-W11045/15

1951

THIS MAP COMPLIES WITH NATIONAL MAP ACCURACY STANDARDS
FOR SALE BY U.S. GEOLOGICAL SURVEY, DENVER 25, COLORADO OR WASHINGTON 25, D. C.
COPIES OF THE ORIGINAL DRAWINGS WITH 20 FOOT CONTOURS AVAILABLE
A FOLDER DESCRIBING TOPOGRAPHIC MAPS AND SYMBOLS IS AVAILABLE ON REQUEST

USGS
Historical File
Topographic Division

U.S.G.S.
FILE COPY
TOPOGRAPHIC DIVISION

NOV - 5 1962