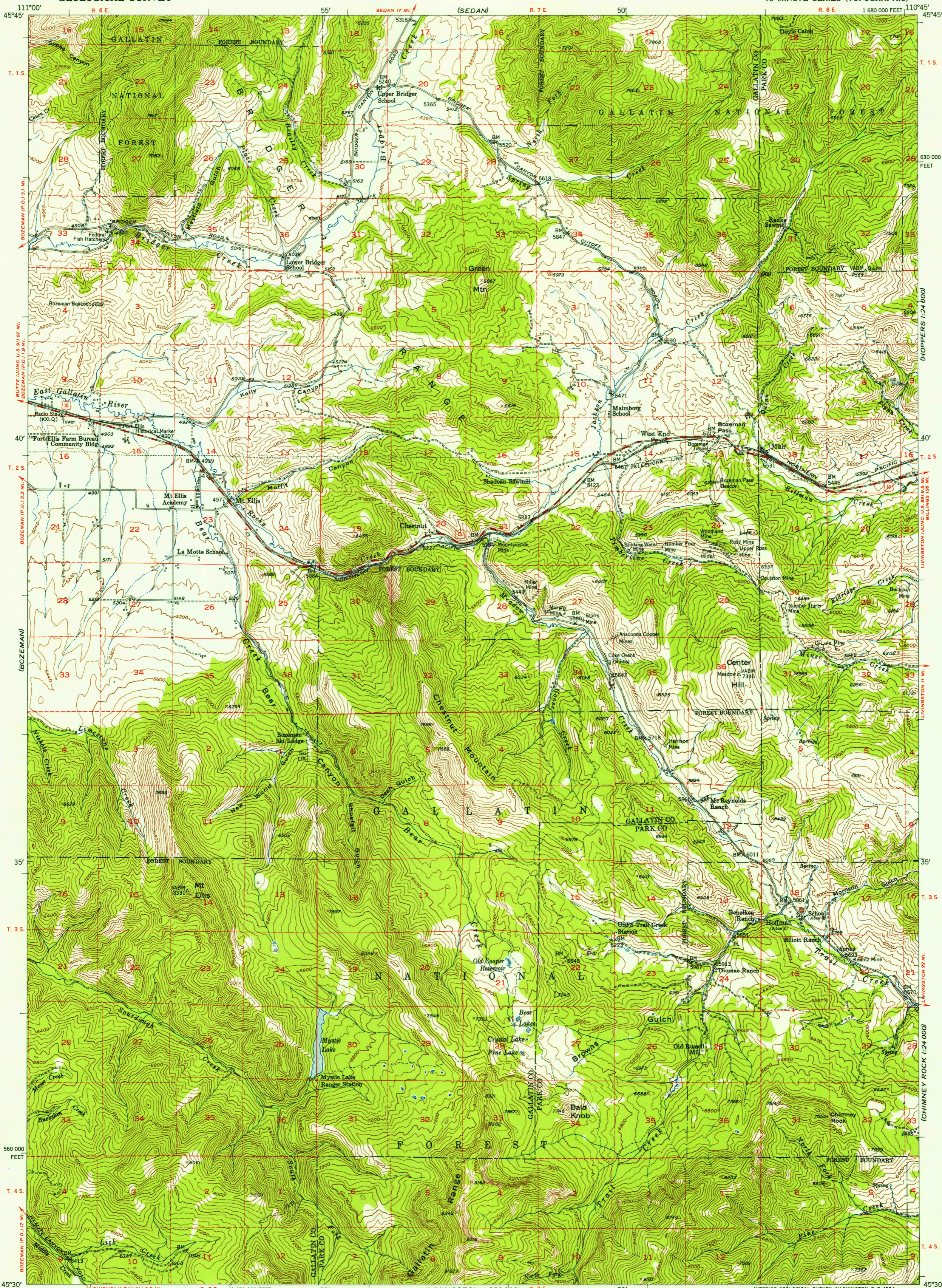
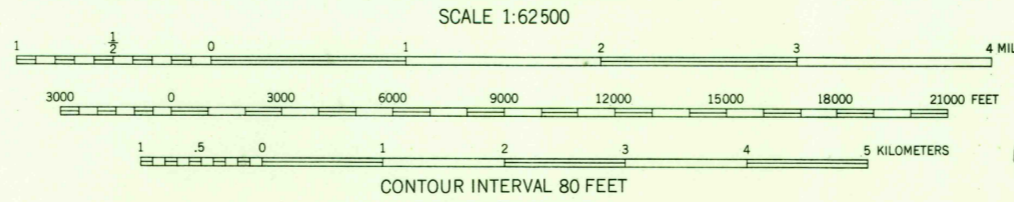
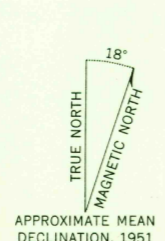


UNITED STATES
DEPARTMENT OF THE INTERIOR
GEOLOGICAL SURVEY

BOZEMAN PASS QUADRANGLE
MONTANA
15 MINUTE SERIES (TOPOGRAPHIC)



Mapped, edited, and published by the Geological Survey as part of the Department of the Interior program for the development of the Missouri River Basin Control by USGS and USC&GS
Topography from aerial photographs by photogrammetric methods. Aerial photographs taken 1948. Field check 1951
Polyconic projection. 1927 North American datum 10,000-foot grid based on Montana coordinate system, south zone
Dashed land lines indicate approximate locations
Unchecked elevations are shown in brown
All mines are inactive



ROAD CLASSIFICATION

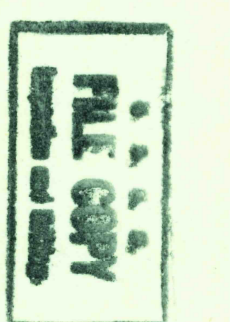
Heavy-duty	4 LANE 6 LANE	Light-duty
Medium-duty	4 LANE 6 LANE	Unimproved dirt
U.S. Route		State Route



BOZEMAN PASS, MONT.
N4530-W11045/15

1951

THIS MAP COMPLIES WITH NATIONAL MAP ACCURACY STANDARDS
FOR SALE BY U. S. GEOLOGICAL SURVEY, FEDERAL CENTER, DENVER, COLORADO OR WASHINGTON 25, D. C.
COPIES OF THE ORIGINAL DRAWINGS WITH 20 FOOT CONTOURS AVAILABLE
A FOLDER DESCRIBING TOPOGRAPHIC MAPS AND SYMBOLS IS AVAILABLE ON REQUEST



USGS
Historical File
Topographic Division

FEB 16 1954
2660