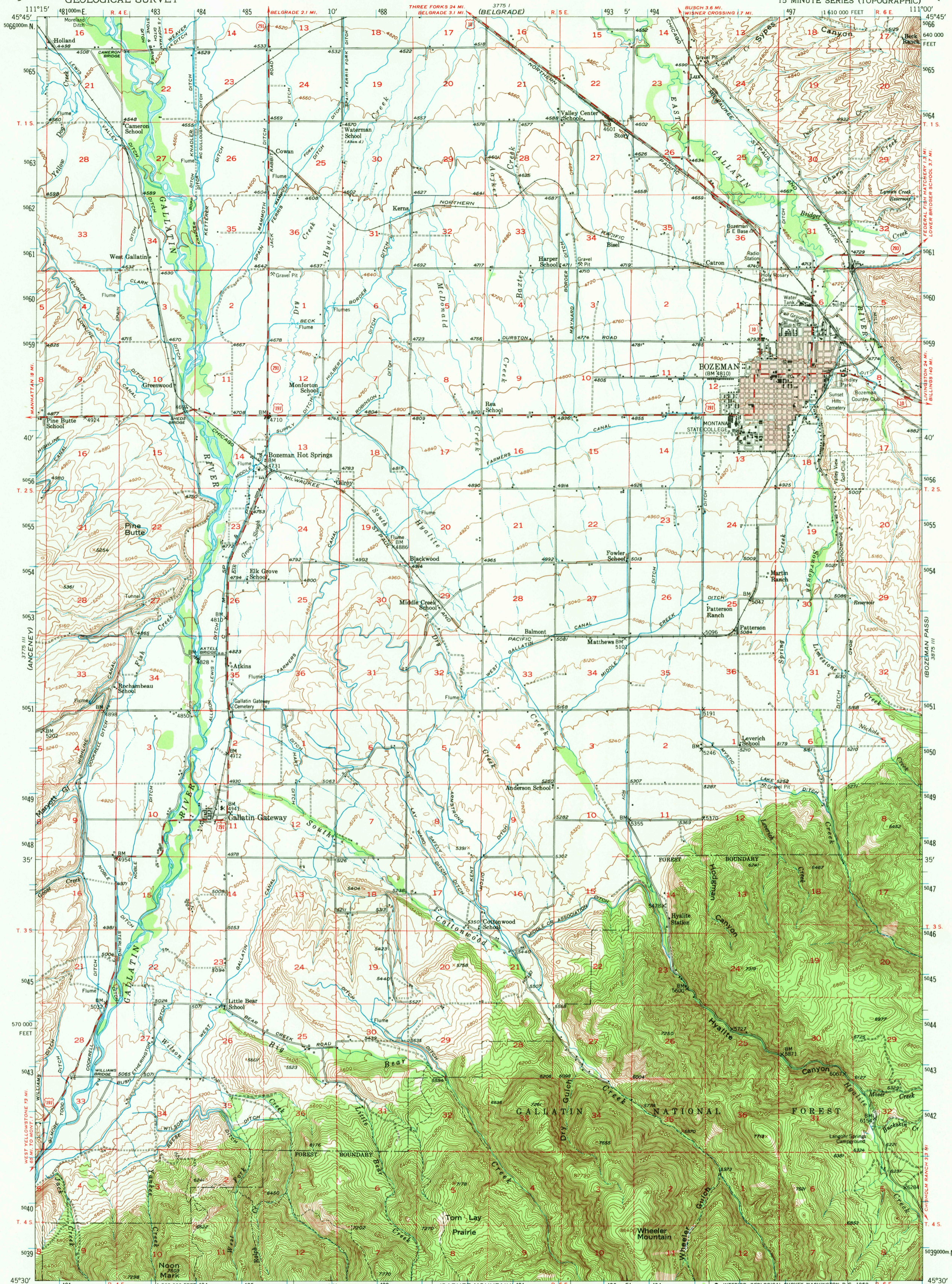


UNITED STATES
DEPARTMENT OF THE INTERIOR
GEOLOGICAL SURVEY

BOZEMAN QUADRANGLE
MONTANA—GALLATIN CO.
15 MINUTE SERIES (TOPOGRAPHIC)



Stereo compilation by Fairchild Aerial Surveys, Inc. for the Bureau of Reclamation. Field examination and publication by the Geological Survey as part of the Department of the Interior Program for the development of the Missouri River Basin. Control by USGS and USC&GS.

Topography from aerial photographs by stereoplanigraph methods 1948. Aerial photographs taken 1947. Field check 1953.

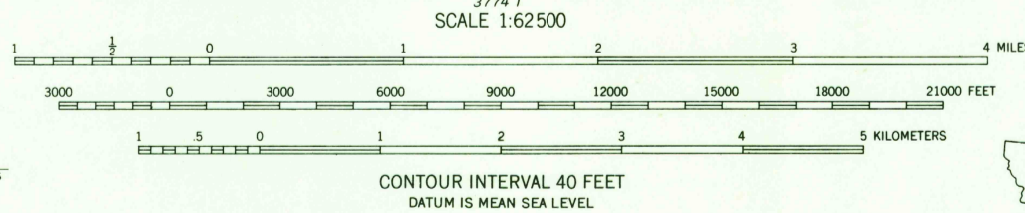
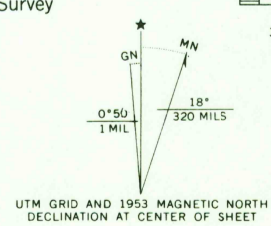
Polyconic projection. 1927 North American datum. 10,000-foot grid based on Montana coordinate system south zone.

Red tint indicates area in which only landmark buildings are shown.

Dashed land lines indicate approximate locations.

Unchecked elevations are shown in brown.

1000-meter Universal Transverse Mercator grid ticks, zone 12, shown in blue.



THIS MAP COMPLIES WITH NATIONAL MAP ACCURACY STANDARDS FOR SALE BY U. S. GEOLOGICAL SURVEY, DENVER, COLORADO 80225 OR WASHINGTON, D. C. 20242. A FOLDER DESCRIBING TOPOGRAPHIC MAPS AND SYMBOLS IS AVAILABLE ON REQUEST.

U.S.G.S.
FILE COPY
TOPOGRAPHIC DIVISION

ROAD CLASSIFICATION
Medium-duty ——— Light-duty ———
Unimproved dirt - - - - -
U. S. Route ——— State Route ———

BOZEMAN, MONT.
N4530-W11100/15

1953

AMS 3775 II—SERIES V794

USGS
Historical File
Topographic Division

4500
JUL 7 1953