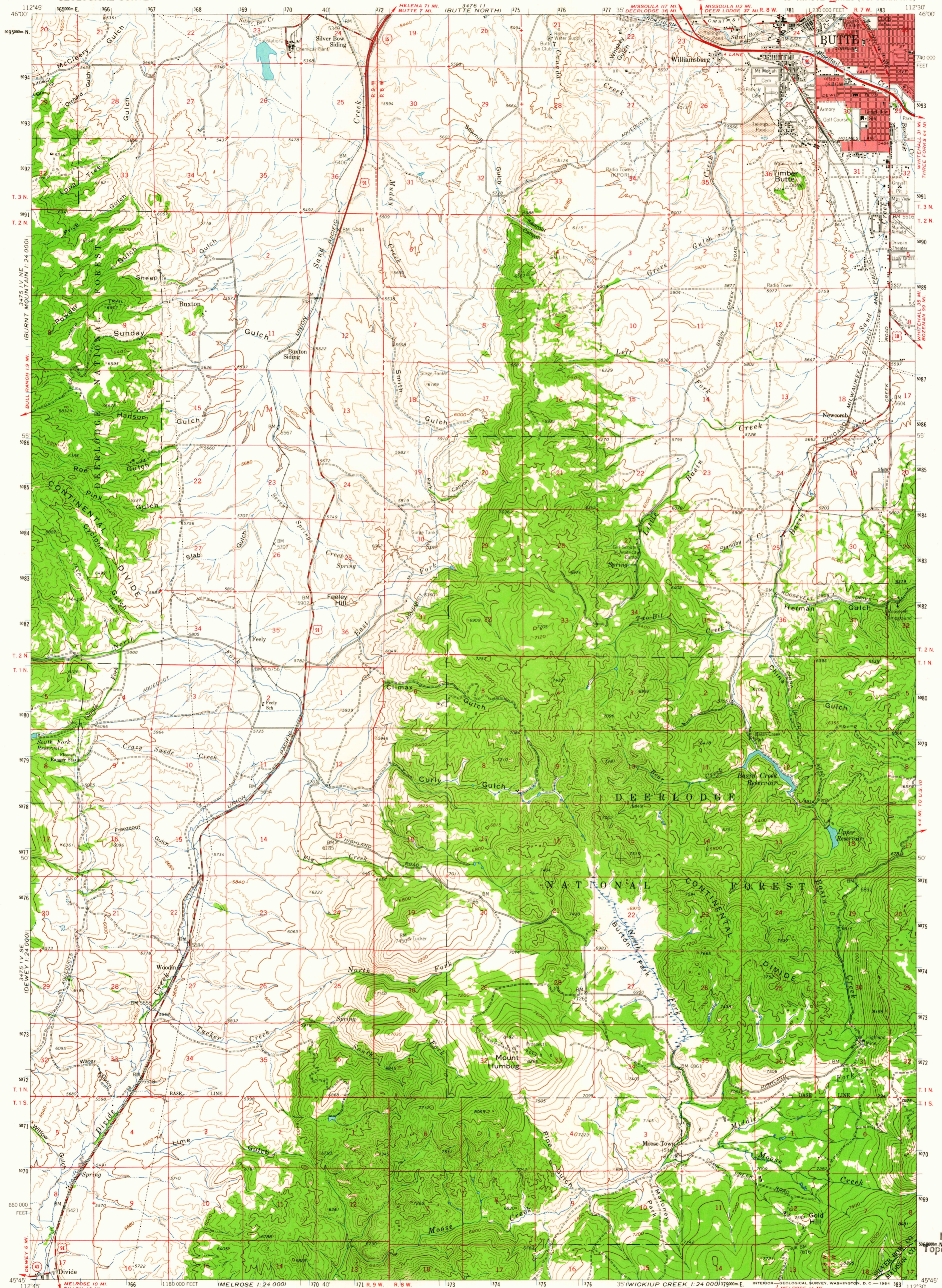
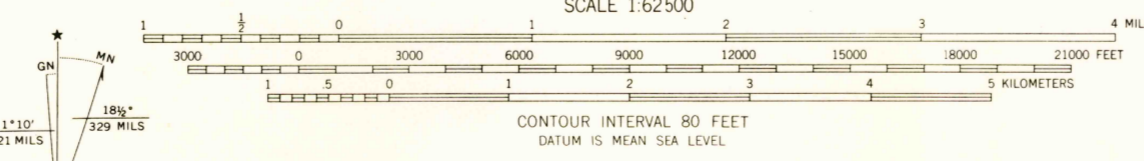


UNITED STATES  
DEPARTMENT OF THE INTERIOR  
GEOLOGICAL SURVEY

BUTTE SOUTH QUADRANGLE  
MONTANA  
15' MINUTE SERIES (TOPOGRAPHIC)

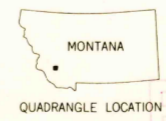


Mapped, edited, and published by the Geological Survey  
Control by USGS and USC&GS  
Topography by photogrammetric methods from aerial  
photographs taken 1956. Field checked 1961  
Polyconic projection. 1927 North American datum  
10,000 foot grid based on Montana coordinate system, south zone  
1000-meter Universal Transverse Mercator grid ticks,  
zone 12, shown in blue  
Red tint indicates areas in which only landmark buildings are shown  
Where omitted, land lines have not been established



ROAD CLASSIFICATION

Heavy duty	Light duty
Medium-duty	Unimproved dirt
Interstate Route	U.S. Route
State Route	



BUTTE SOUTH, MONT.  
N4545-W11230/15  
1961  
AMS 3475 1-SERIES V764

THIS MAP COMPLIES WITH NATIONAL MAP ACCURACY STANDARDS  
FOR SALE BY U.S. GEOLOGICAL SURVEY, DENVER 25, COLORADO OR WASHINGTON 25, D.C.  
A FOLDER DESCRIBING TOPOGRAPHIC MAPS AND SYMBOLS IS AVAILABLE ON REQUEST

USGS  
Historical File  
Topographic Division

3140

JUN 9 1964