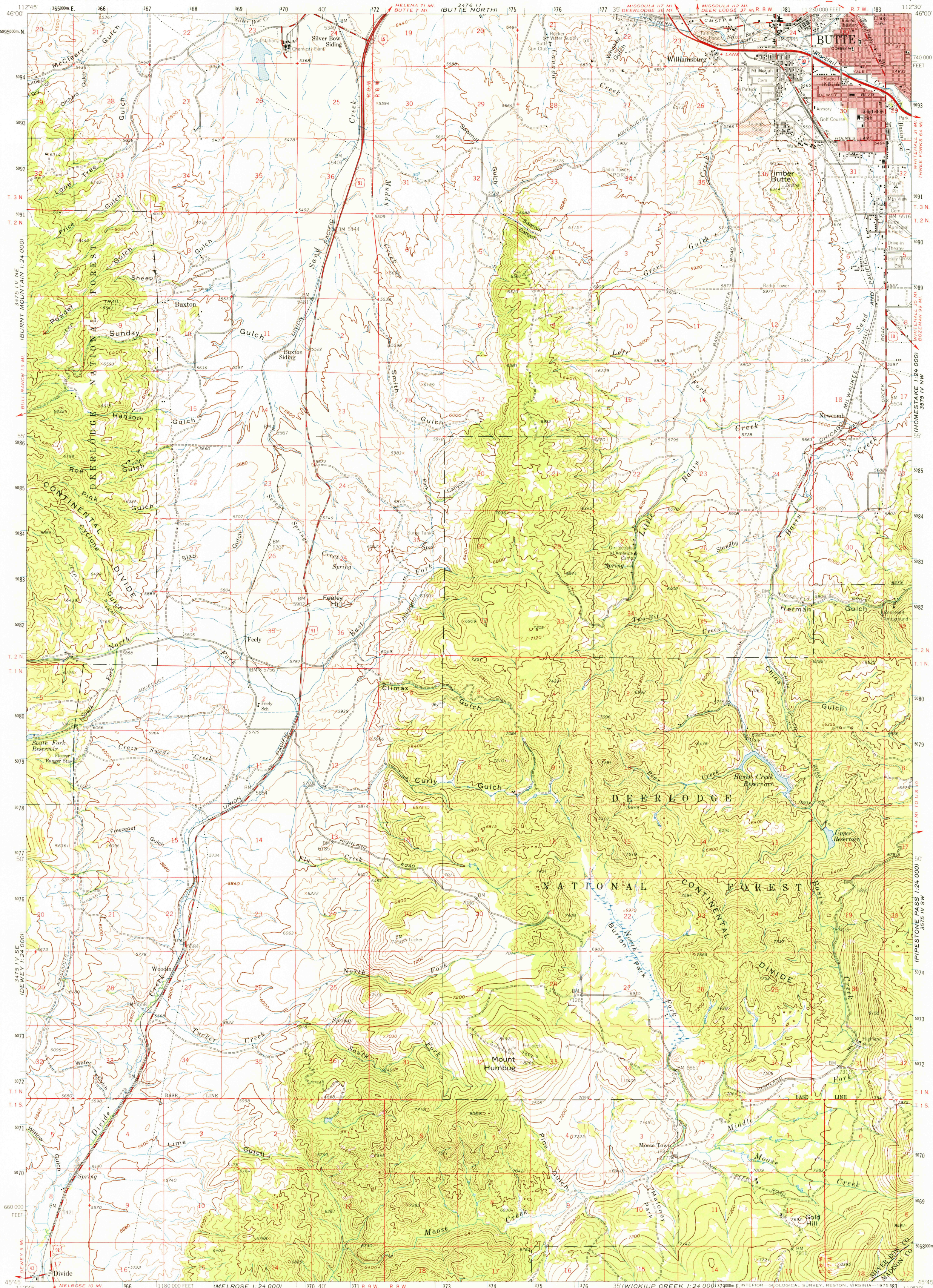


UNITED STATES
DEPARTMENT OF THE INTERIOR
GEOLOGICAL SURVEY

BUTTE SOUTH QUADRANGLE
MONTANA
15' MINUTE SERIES (TOPOGRAPHIC)



Mapped, edited, and published by the Geological Survey

Control by USGS and USC&GS

Topography by photogrammetric methods from aerial photographs taken 1956. Field checked 1961

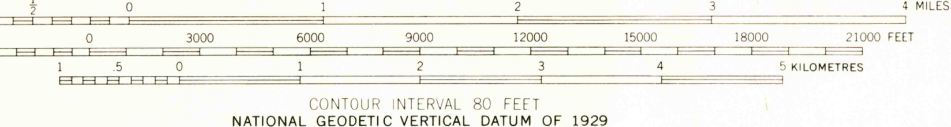
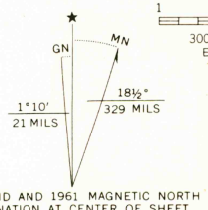
Polyconic projection 1927 North American datum

10,000 foot grid based on Montana coordinate system, south zone

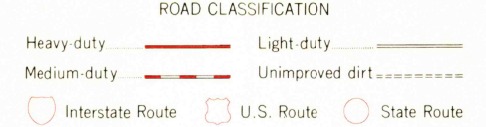
1000 metre Universal Transverse Mercator grid ticks, zone 12, shown in blue

Red tint indicates areas in which only landmark buildings are shown

Where omitted, land lines have not been established



CONTOUR INTERVAL 80 FEET
NATIONAL GEODETIC VERTICAL DATUM OF 1929



QUADRANGLE LOCATION

BUTTE SOUTH, MONT.
N4545-W11230/15

1961

AMS 3475 1-SERIES V794

THIS MAP COMPLIES WITH NATIONAL MAP ACCURACY STANDARDS
FOR SALE BY U. S. GEOLOGICAL SURVEY, DENVER, COLORADO 80225, OR RESTON, VIRGINIA 22092
A FOLDER DESCRIBING TOPOGRAPHIC MAPS AND SYMBOLS IS AVAILABLE ON REQUEST

USGS
HISTORICAL FILE
TOPOGRAPHIC DIVISION

DEC 0 8 1975