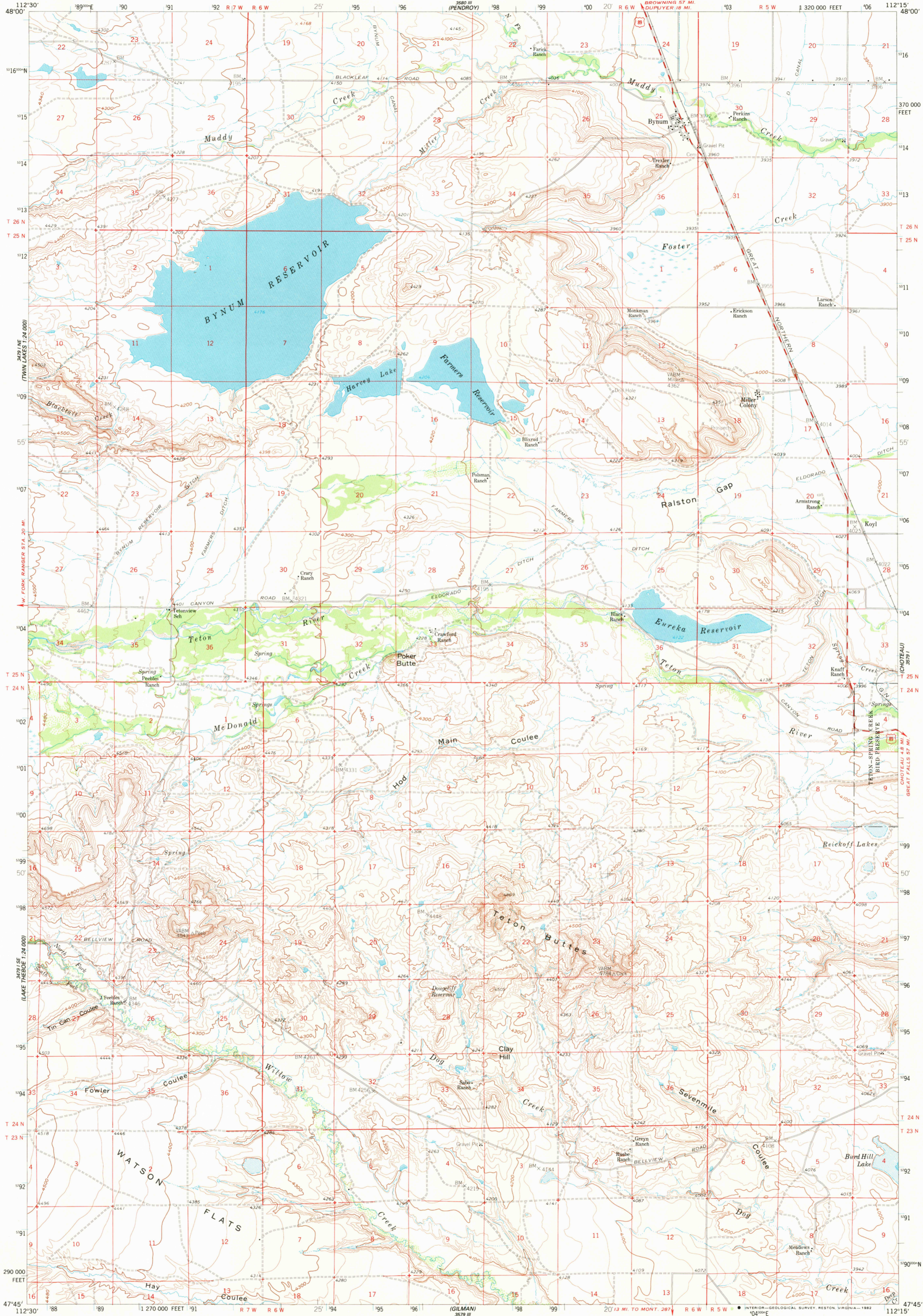


36° 15' N  
112° 30' W  
1:250,000

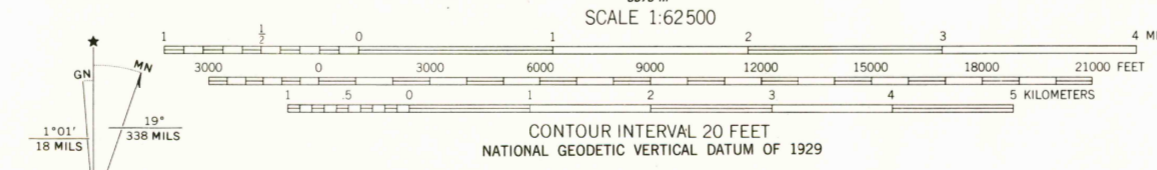
UNITED STATES  
DEPARTMENT OF THE INTERIOR  
GEOLOGICAL SURVEY

BYNUM QUADRANGLE  
MONTANA-TETON CO  
15 MINUTE SERIES (TOPOGRAPHIC)

36° 15' N  
112° 15' W  
1:250,000  
(GALLUP CO)



Mapped, edited, and published by the Geological Survey  
Control by USGS and USC & GS  
Topography by photogrammetric methods from aerial  
photographs taken 1954. Field checked 1960  
Polyconic projection. 1927 North American datum  
10 000-foot grid based on Montana coordinate system,  
north zone  
1000-meter Universal Transverse Mercator grid ticks,  
zone 12, shown in blue.  
To place on the predicted North American Datum 1983 move  
the projection lines 10 meters north and 65 meters east  
There may be private inholdings within the boundaries of  
the National or State reservations shown on this map



ROAD CLASSIFICATION  
Medium-duty ——— Light duty ———  
Unimproved dirt - - - - - U.S. Route



BYNUM, MONT  
N4745-W11215/15  
1960  
DMA 3579 IV-SERIES V794

THIS MAP COMPLIES WITH NATIONAL MAP ACCURACY STANDARDS  
FOR SALE BY U. S. GEOLOGICAL SURVEY, DENVER, COLORADO 80225, OR RESTON, VIRGINIA 22092  
A FOLDER DESCRIBING TOPOGRAPHIC MAPS AND SYMBOLS IS AVAILABLE ON REQUEST

RETURN TO:  
NMD HISTORICAL MAP ARCHIVES  
USGS NATIONAL CENTER, MS-522  
RESTON, VA 22092