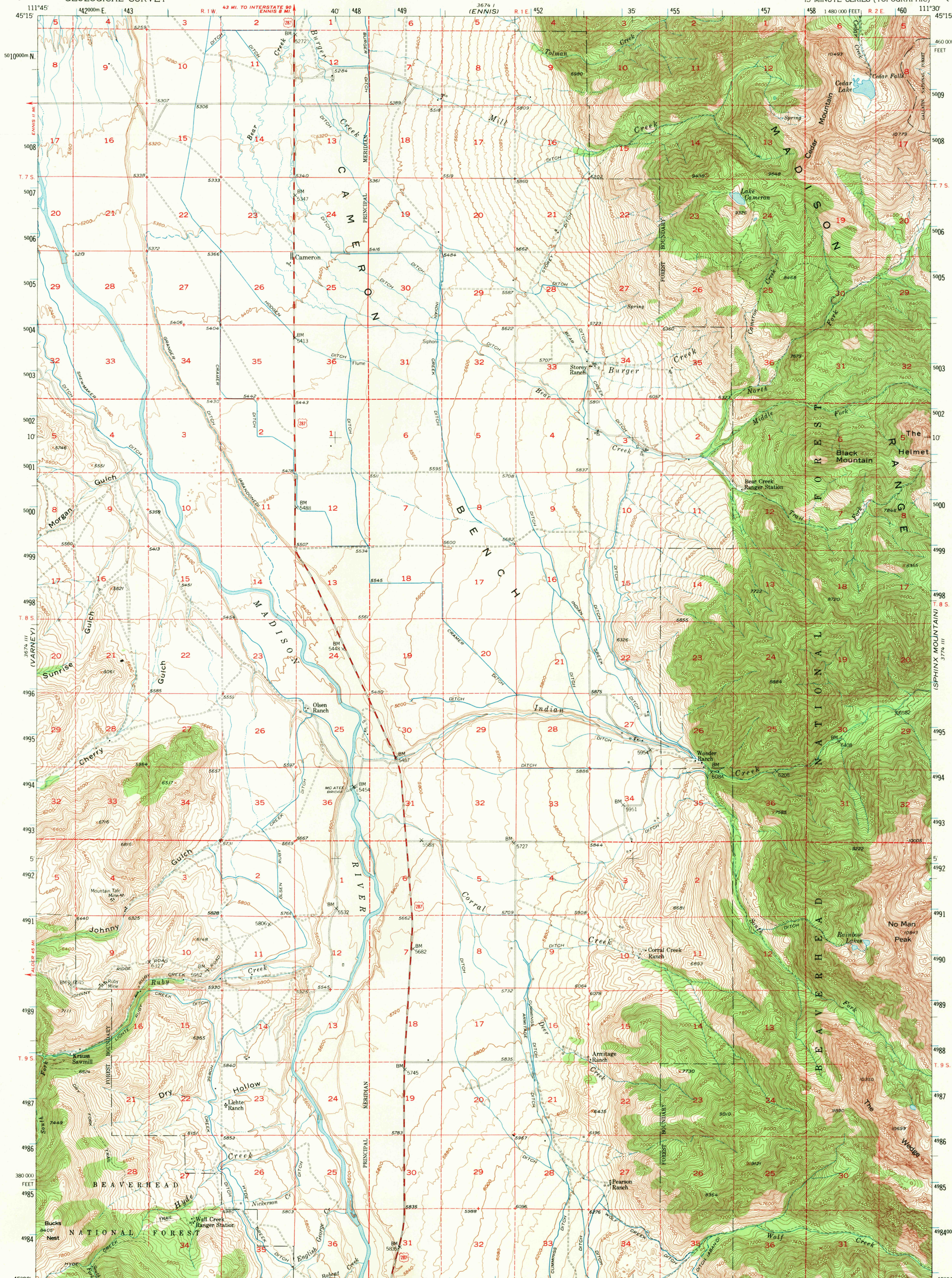
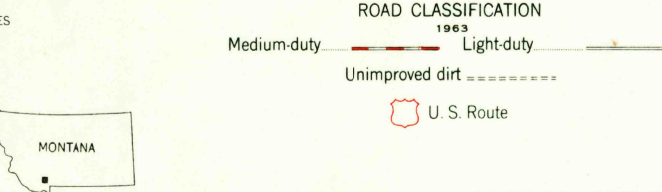
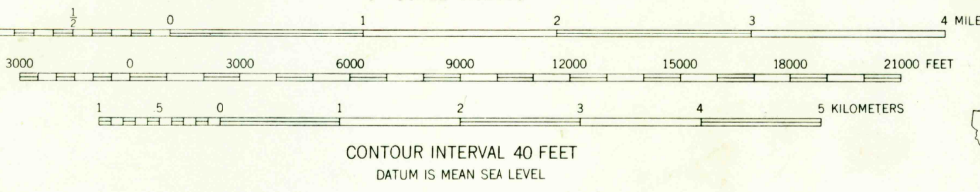
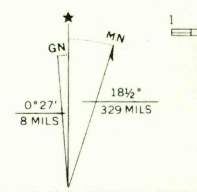


UNITED STATES
DEPARTMENT OF THE INTERIOR
GEOLOGICAL SURVEY

CAMERON QUADRANGLE
MONTANA-MADISON CO.
15 MINUTE SERIES (TOPOGRAPHIC)



Stereo compilation by Fairchild Aerial Surveys, Inc.,
for the Bureau of Reclamation
Field examination and publication by the Geological Survey
as part of the Department of the Interior program
for the development of the Missouri River Basin
Control by USGS and USC&GS
Topography from aerial photographs by stereoplanigraph
methods 1948. Aerial photographs taken 1947. Field check 1950
Polyconic projection. 1927 North American datum
10,000-foot grid based on Montana coordinate system,
south zone
Dashed land lines indicate approximate locations
Land lines unsurveyed in parts of T. 9 S., R. 2 E.,
T. 9 S., R. 1 W. and T. 7 S., R. 2 E.
Unchecked elevations are shown in brown
1000-meter Universal Transverse Mercator grid ticks,
zone 12, shown in blue



U.S.G.S.
FILE COPY
TOPOGRAPHIC DIVISION
CAMERON, MONT.
N4500-W1130/15
1950
AMS 3674 II-SERIES V794

USGS
Historical File
Topographic Division

3685
MAR 5 1970