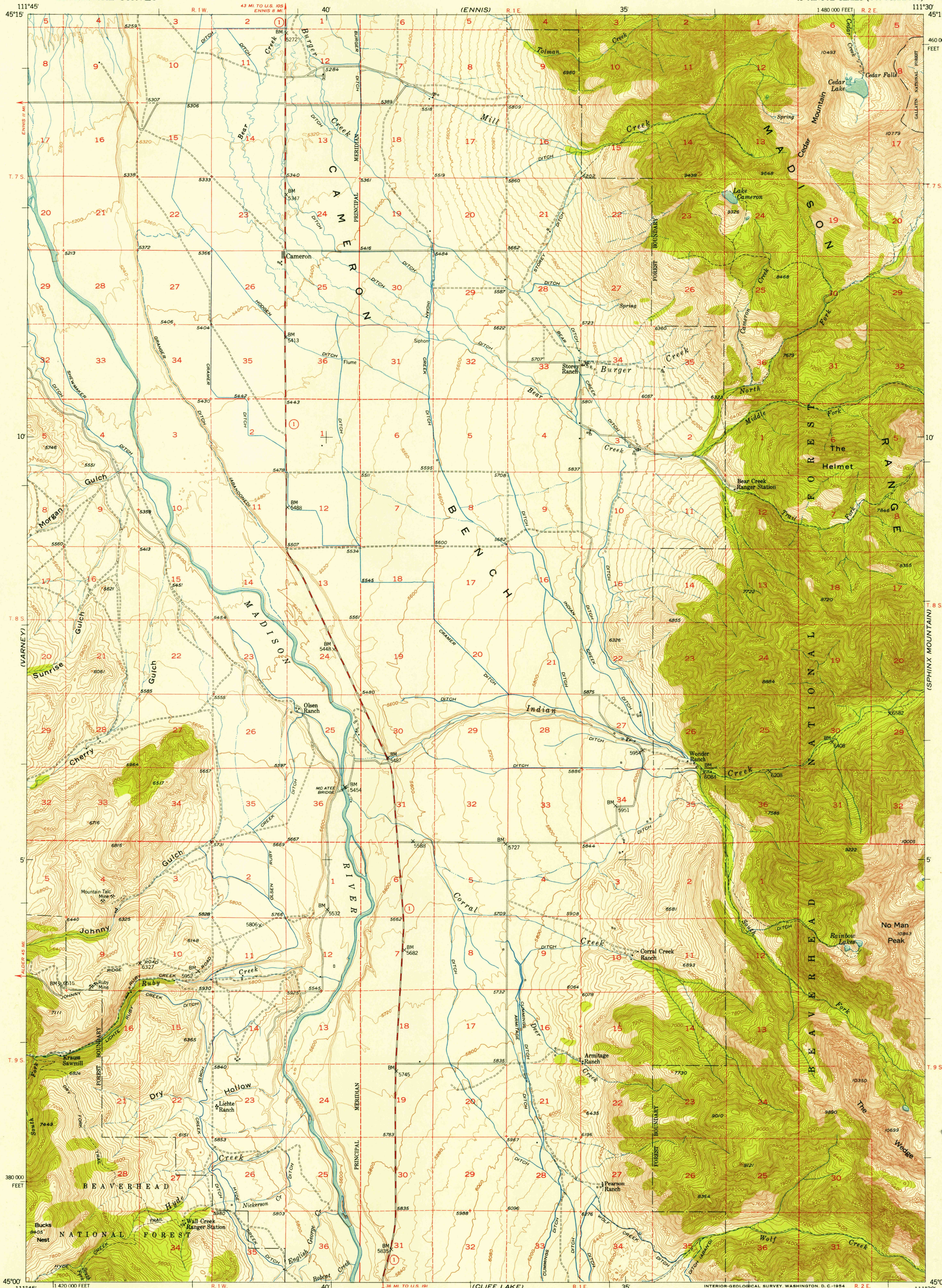


UNITED STATES
DEPARTMENT OF THE INTERIOR
GEOLOGICAL SURVEY

CAMERON QUADRANGLE
MONTANA-MADISON CO.
15 MINUTE SERIES (TOPOGRAPHIC)

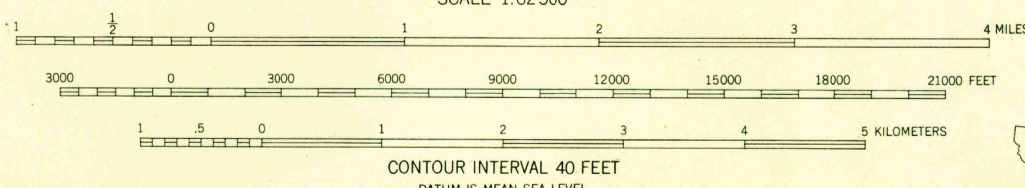
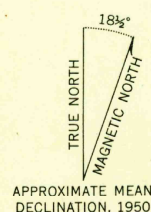


Stereo compilation by Fairchild Aerial Surveys, Inc.,
for the Bureau of Reclamation
Field examination and publication by the Geological Survey
as part of the Department of the Interior program
for the development of the Missouri River Basin
Control by USGS and USCRGS

Topography from aerial photographs by stereoplanigraph
methods 1948. Aerial photographs taken 1947. Field check 1950
Polyconic projection. 1927 North American datum
10,000-foot grid based on Montana coordinate system,
south zone

Dashed land lines indicate approximate locations
Land lines unsurveyed in parts of T.9S.-R.2E.,
T.9S.-R.1W. and T.7S.-R.2E.

Unchecked elevations are shown in brown



THIS MAP COMPLIES WITH NATIONAL MAP ACCURACY STANDARDS
FOR SALE BY U. S. GEOLOGICAL SURVEY, FEDERAL CENTER, DENVER, COLORADO OR WASHINGTON 25, D. C.
A FOLDER DESCRIBING TOPOGRAPHIC MAPS AND SYMBOLS IS AVAILABLE ON REQUEST



QUADRANGLE LOCATION

ROAD CLASSIFICATION
Heavy-duty ——— 4 LANE 6 LANE Light-duty ———
Medium-duty ——— 4 LANE 6 LANE Unimproved dirt ———
U. S. Route ——— State Route ———

CAMERON, MONT.
N4500-W1130/15
1950

USGS
Historical File
Topographic Division

JUN 10 1954