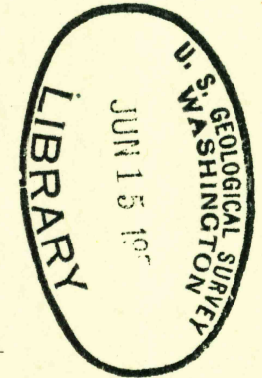
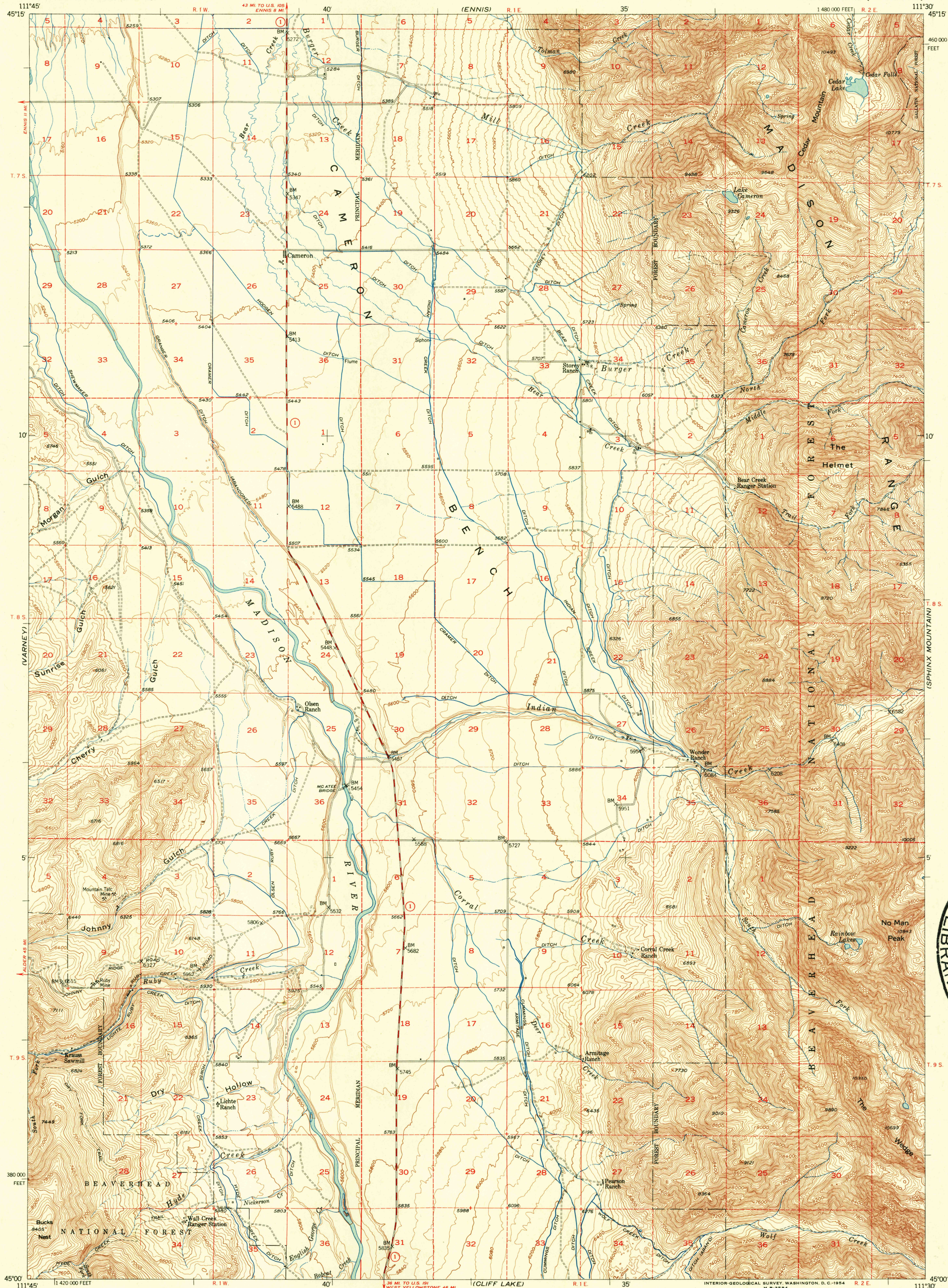


(VIRGINIA CITY)

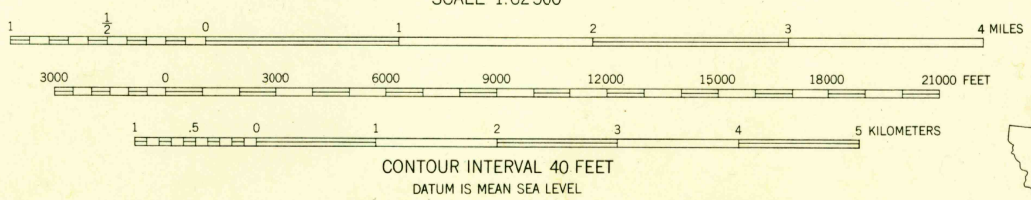
UNITED STATES DEPARTMENT OF THE INTERIOR GEOLOGICAL SURVEY

CAMERON QUADRANGLE MONTANA-MADISON CO. 15 MINUTE SERIES (TOPOGRAPHIC)

(SPANISH PEAKS)



Stereo compilation by Fairchild Aerial Surveys, Inc. for the Bureau of Reclamation... Topography from aerial photographs by stereoplanigraph methods 1948. Aerial photographs taken 1947. Field check 1950. Polyconic projection. 1927 North American datum 10,000-foot grid based on Montana coordinate system, south zone. Dashed land lines indicate approximate locations. Land lines unsurveyed in parts of T.9S.-R.2E., T.9S.-R.1W. and T.7S.-R.2E. Unchecked elevations are shown in brown.



ROAD CLASSIFICATION table with symbols for heavy-duty, medium-duty, light-duty, and unimproved dirt roads, as well as U.S. and State routes.



CAMERON, MONT. N4500-W1130/15 1950

FOR SALE BY U. S. GEOLOGICAL SURVEY, FEDERAL CENTER, DENVER, COLORADO OR WASHINGTON 25, D. C. A FOLDER DESCRIBING TOPOGRAPHIC MAPS AND SYMBOLS IS AVAILABLE ON REQUEST

(MONUMENT RIDGE)

(CLIFF LAKE)

(HEBBEN DAM)

USGS Library Reston, VA. Topo Archive