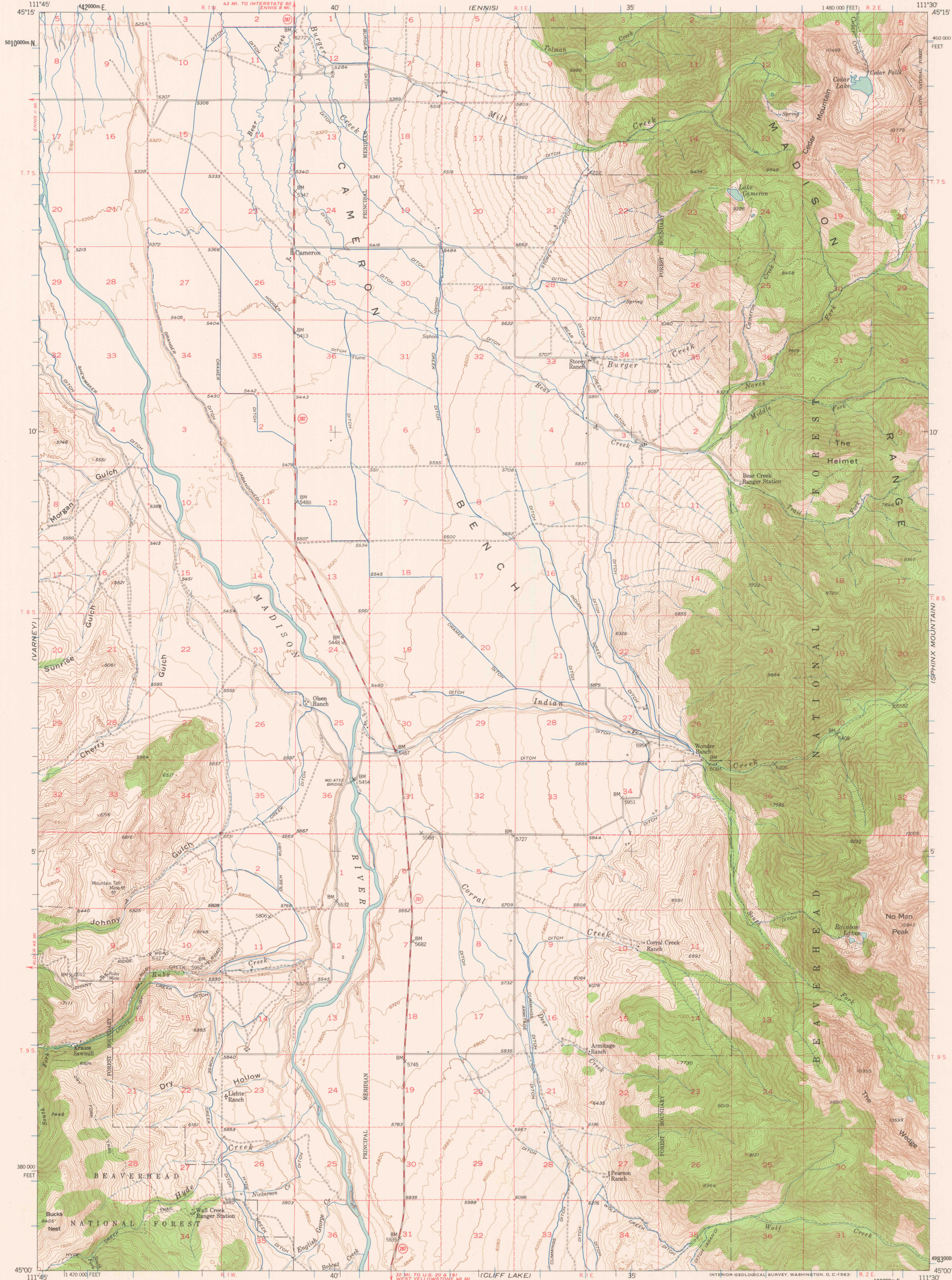
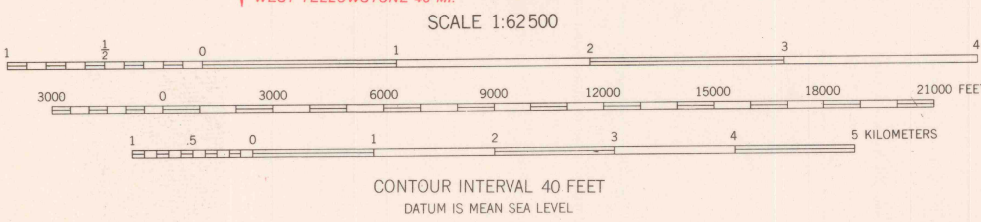
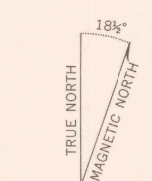


UNITED STATES
DEPARTMENT OF THE INTERIOR
GEOLOGICAL SURVEY

CAMERON QUADRANGLE
MONTANA-MADISON CO.
15 MINUTE SERIES (TOPOGRAPHIC)



Stereo compilation by Fairchild Aerial Surveys, Inc., for the Bureau of Reclamation.
Field examination and publication by the Geological Survey as part of the Department of the Interior program for the development of the Missouri River Basin.
Control by USGS and USC&GS.
Topography from aerial photographs by stereoplanigraph methods 1948. Aerial photographs taken 1947. Field check 1950.
Polyconic projection. 1927 North American datum. 10,000-foot grid based on Montana coordinate system, south zone.
Dashed land lines indicate approximate locations.
Land lines unsurveyed in parts of T.9S.-R.2E., T.9S.-R.1W. and T.7S.-R.2E.
Unchecked elevations are shown in brown.
1000-meter Universal Transverse Mercator grid ticks, zone 12, shown in blue.



ROAD CLASSIFICATION
1963
Medium-duty ——— Light-duty ———
Unimproved dirt ———
State Route —○—

USGS
Historical File
Topographic Division

CAMERON, MONT.
N4500—W11130/15
1950

THIS MAP COMPLIES WITH NATIONAL MAP ACCURACY STANDARDS
FOR SALE BY U.S. GEOLOGICAL SURVEY, DENVER 25, COLORADO OR WASHINGTON 25, D.C.
A FOLDER DESCRIBING TOPOGRAPHIC MAPS AND SYMBOLS IS AVAILABLE ON REQUEST

NOV 19 1963

2240