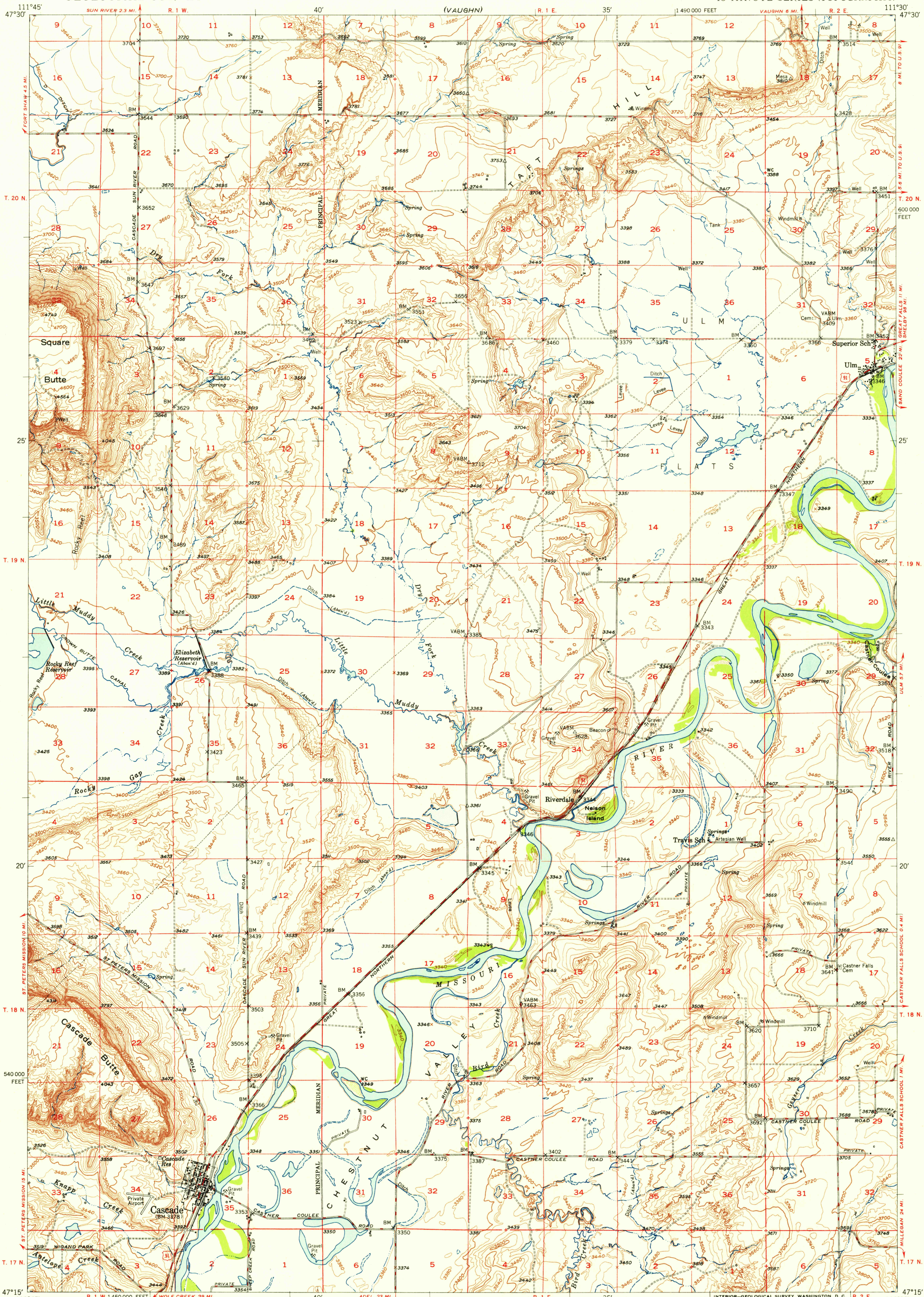
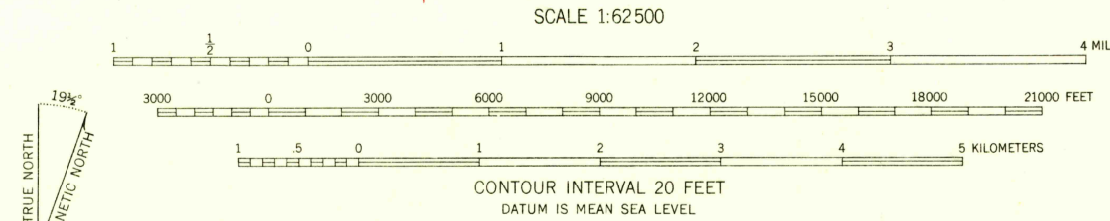


(FAIRFIELD)

(GREAT FALLS)



Mapped, edited, and published by the Geological Survey as part of the Department of the Interior program for the development of the Missouri River Basin. Control by USGS and USC&GS. Topography from aerial photographs by multiplex methods. Aerial photographs taken July-August 1946. Field check 1949. Polyconic projection. 1927 North American datum. 10,000-foot grid based on Montana coordinate system, central zone.



ROAD CLASSIFICATION  
HARD-SURFACE ALL WEATHER ROADS  
Heavy-duty 2 LANE 10 LANE  
Medium-duty 2 LANE 10 LANE  
Loose-surface, graded, or narrow hard-surface  
U. S. Route  
DRY WEATHER ROADS  
Improved dirt  
Unimproved dirt  
State Route

THIS MAP COMPLIES WITH NATIONAL MAP ACCURACY STANDARDS  
FOR SALE BY U. S. GEOLOGICAL SURVEY, FEDERAL CENTER, DENVER, COLORADO OR WASHINGTON 25, D. C.  
A FOLDER DESCRIBING TOPOGRAPHIC MAPS AND SYMBOLS IS AVAILABLE ON REQUEST

CASCADE, MONT.  
N4715-W1130/15  
1949

USGS  
Historical File  
Topographic Division  
U.S.G.S.  
FILE COPY  
TOPOGRAPHIC DIVISION  
SEP 6 1956  
4095