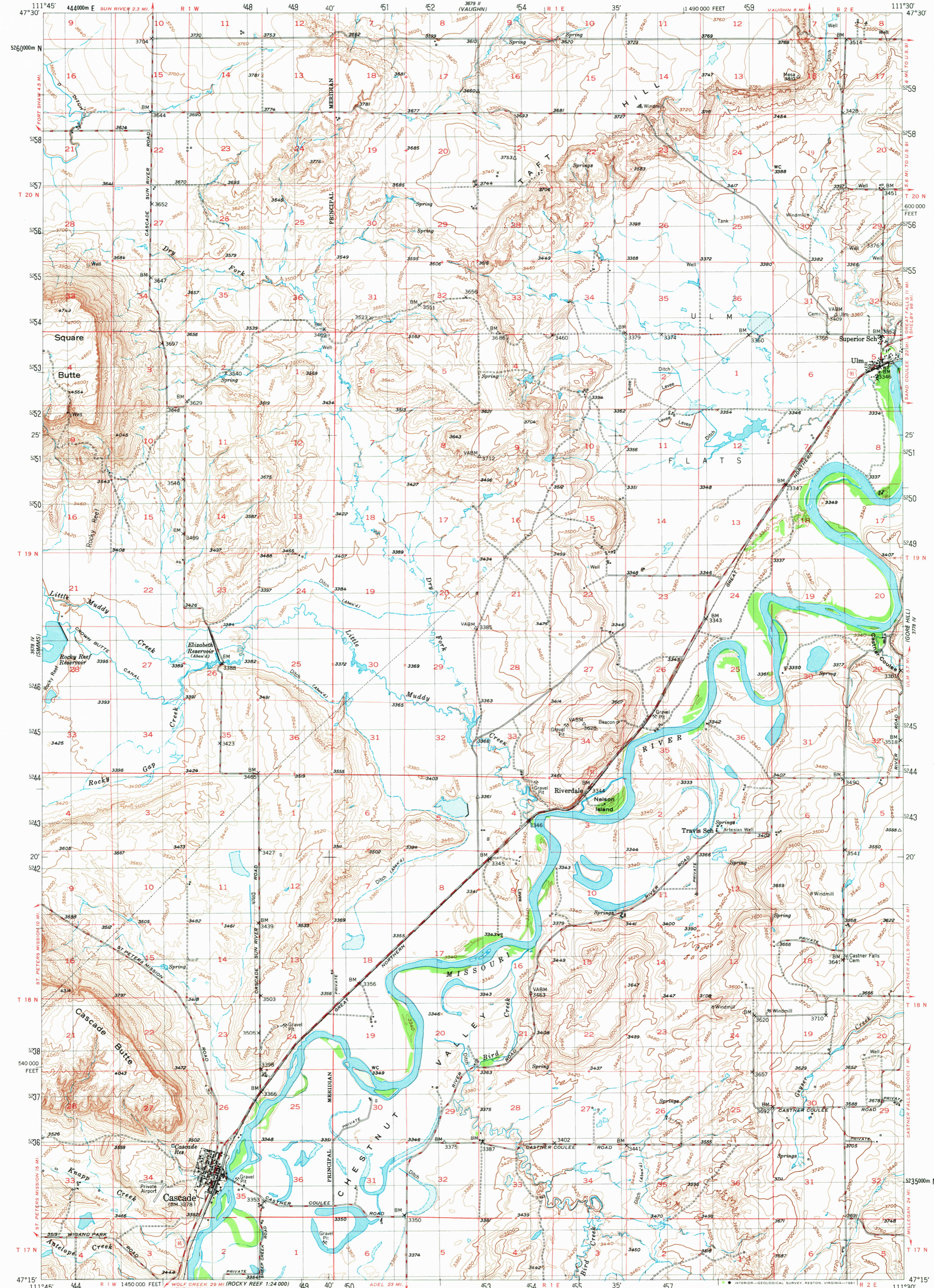


UNITED STATES
DEPARTMENT OF THE INTERIOR
GEOLOGICAL SURVEY

CASCADE QUADRANGLE
MONTANA-CASCADE CO.
15 MINUTE SERIES (TOPOGRAPHIC)



Mapped, edited, and published by the Geological Survey as part of the Department of the Interior program for the development of the Missouri River Basin. Control by USGS and USC&GS. Topography from aerial photographs by multiplex methods. Aerial photographs taken July - August 1946. Field check 1949. Polyconic projection. 1927 North American datum. 10,000-foot grid based on Montana coordinate system, central zone. 1000-meter Universal Transverse Mercator grid, zone 12, shown in black. UTM GRID AND 1949 MAGNETIC NORTH DECLINATION AT CENTER OF SHEET. THIS MAP COMPLIES WITH NATIONAL MAP ACCURACY STANDARDS FOR SALE BY U. S. GEOLOGICAL SURVEY, DENVER, COLORADO 80225, OR RESTON, VIRGINIA 22092. A FOLDER DESCRIBING TOPOGRAPHIC MAPS AND SYMBOLS IS AVAILABLE ON REQUEST.

ROAD CLASSIFICATION

HARD-SURFACE ALL WEATHER ROADS	DRY WEATHER ROADS
Heavy-duty	Medium-duty
Loose-surface, graded, or narrow hard-surface	U. S. Route
State Route	

CASCADE, MONT.
N4715-W1130/15
1949
DMA 3678 I-SERIES V794

RETURN TO:
NMD HISTORICAL MAP ARCHIVE
USGS NATIONAL CENTER,
RESTON, VA 22092