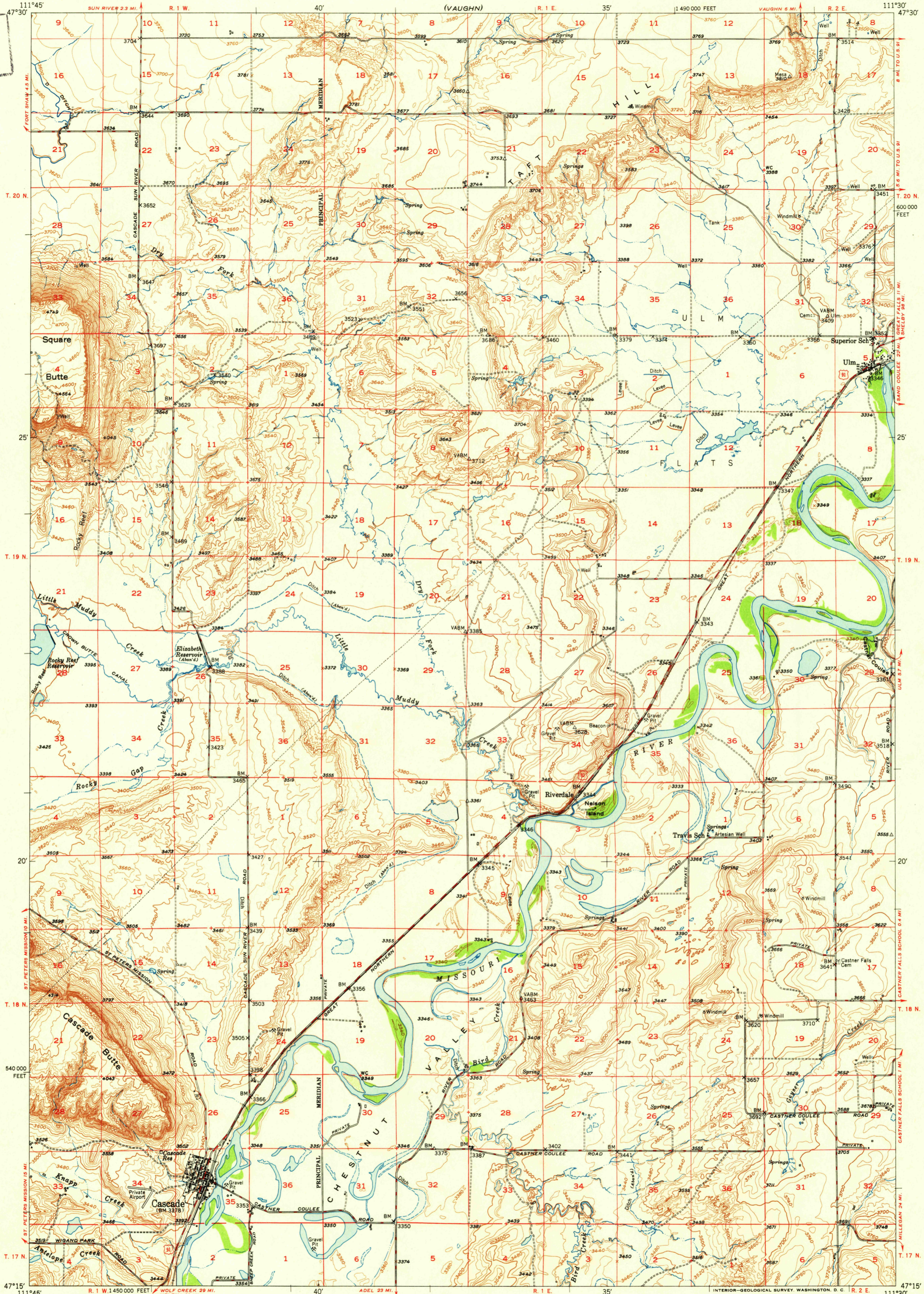
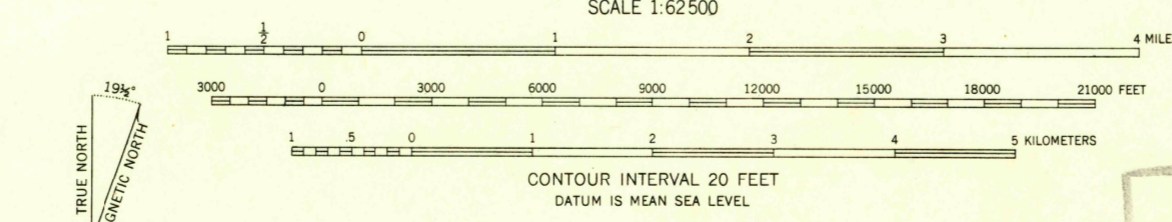


(GREAT FALLS)

U.S.G.S.
FILE COPY
Inspection and Editing.



Mapped, edited, and published by the Geological Survey as part of the Department of the Interior program for the development of the Missouri River Basin
Control by USGS and USC&GS
Topography from aerial photographs by multiplex methods
Aerial photographs taken July - August 1946. Field check 1949
Polyconic projection. 1927 North American datum
10,000-foot grid based on Montana coordinate system, central zone



ROAD CLASSIFICATION

HARD-SURFACE ALL WEATHER ROADS	DRY WEATHER ROADS
Heavy-duty LAINE LANE	Improved dirt
Medium-duty LAINE LANE	Unimproved dirt
Loose-surface, graded, or narrow hard-surface	
U. S. Route	State Route

U.S.G.S.
FILE COPY
Inspection and Editing.

CASCADE, MONT.
N4715-W11130/15
EDITION OF 1951

THIS MAP COMPLIES WITH NATIONAL MAP ACCURACY STANDARDS
FOR SALE BY U. S. GEOLOGICAL SURVEY, FEDERAL CENTER, DENVER, COLORADO OR WASHINGTON 25, D. C.
A FOLDER DESCRIBING TOPOGRAPHIC MAPS AND SYMBOLS IS AVAILABLE ON REQUEST

USGS
Historical File
Topographic Division

JUL 2 1951

2000