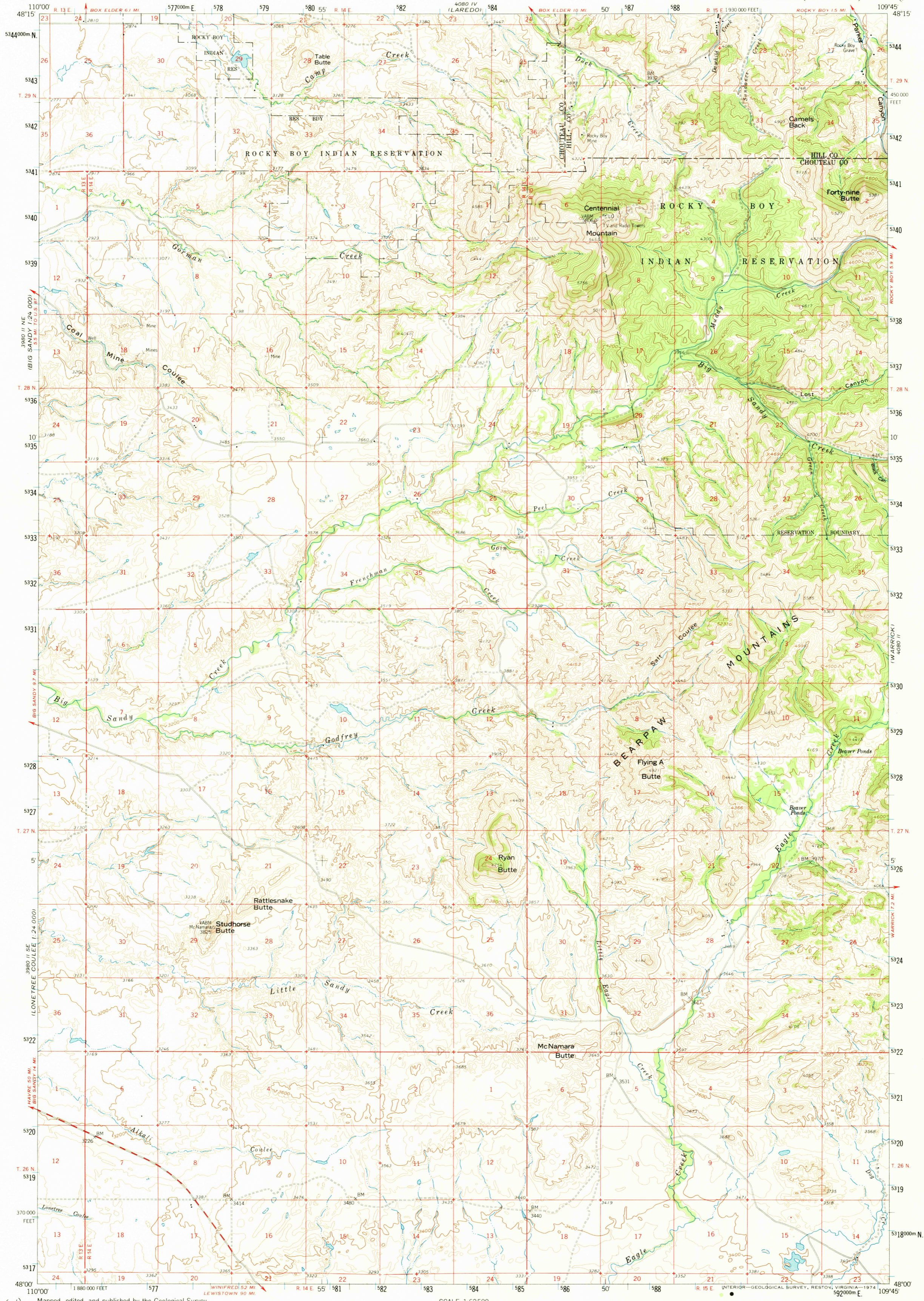


390 1/2 MI
BOX ELDER 19 MI
180 ELDER

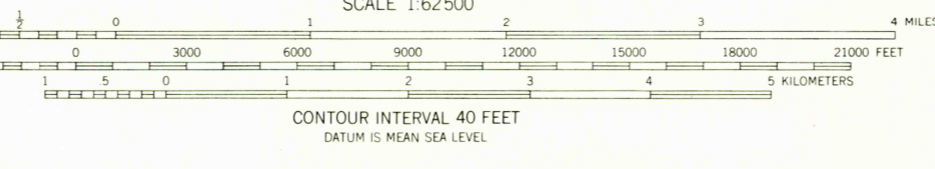
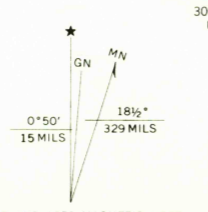
UNITED STATES
DEPARTMENT OF THE INTERIOR
GEOLOGICAL SURVEY

CENTENNIAL MOUNTAIN QUADRANGLE
MONTANA
15 MINUTE SERIES (TOPOGRAPHIC)

390 1/2 MI
BOX ELDER 19 MI
180 ELDER



Mapped, edited, and published by the Geological Survey
Control by USGS and USC&GS
Topography from aerial photographs by photogrammetric methods
Aerial photographs taken 1956. Field check 1959
Polyconic projection. 1927 North American datum
10,000-foot grid based on Montana coordinate system,
north zone
1000-meter Universal Transverse Mercator grid ticks,
zone 12, shown in blue



ROAD CLASSIFICATION
Medium-duty ——— Light-duty ———
Unimproved dirt - - - - -



THIS MAP COMPLIES WITH NATIONAL MAP ACCURACY STANDARDS
FOR SALE BY U. S. GEOLOGICAL SURVEY, DENVER, COLORADO 80225, OR RESTON, VIRGINIA 22092
A FOLDER DESCRIBING TOPOGRAPHIC MAPS AND SYMBOLS IS AVAILABLE ON REQUEST

CENTENNIAL MOUNTAIN, MONT.
N4800-W10945/15
1959
AMS 4080 III—SERIES V794