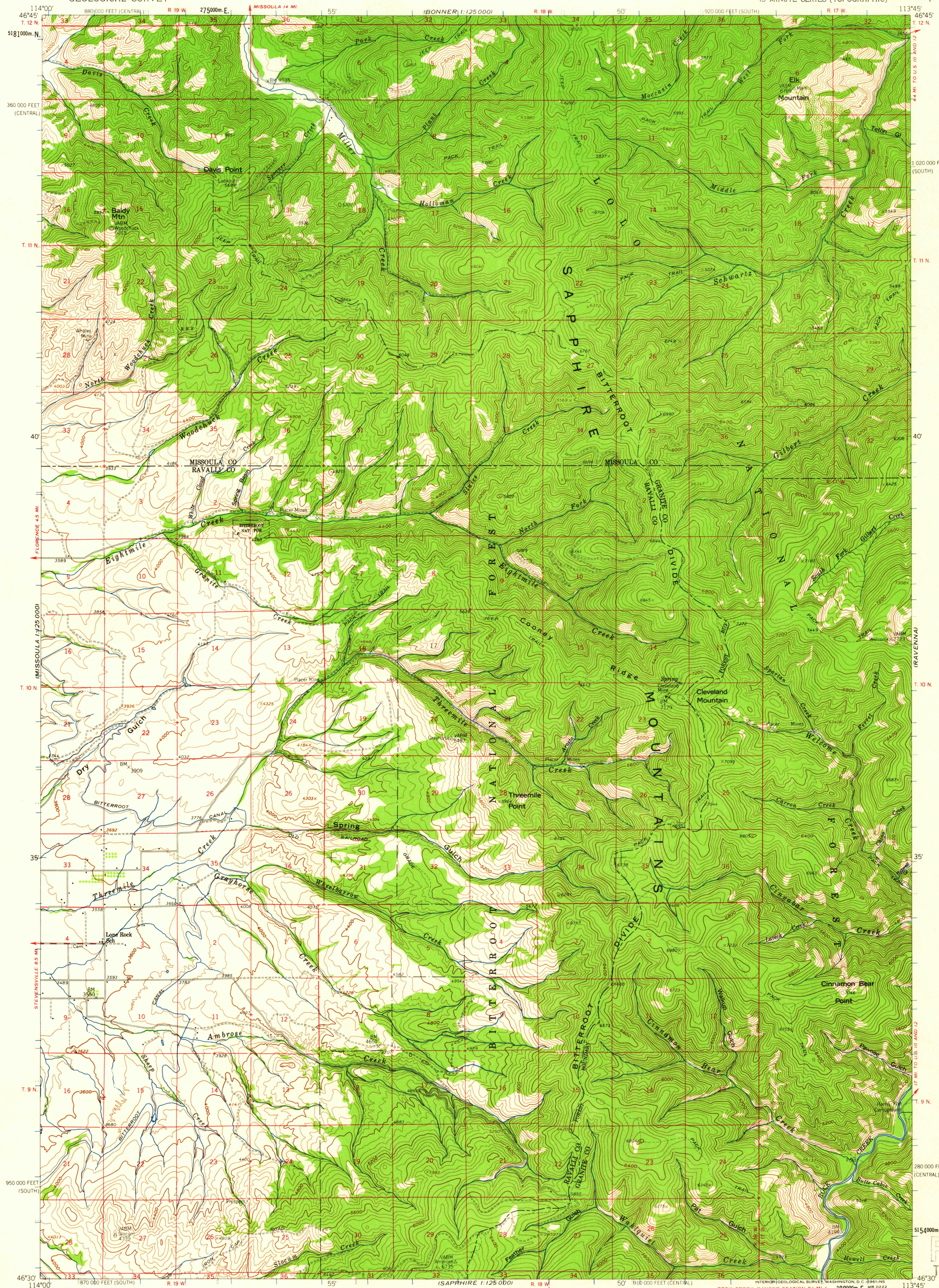


MISSOULA
1:125 000

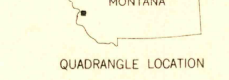
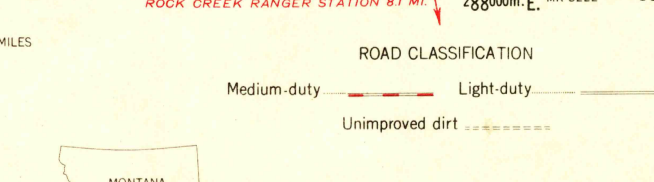
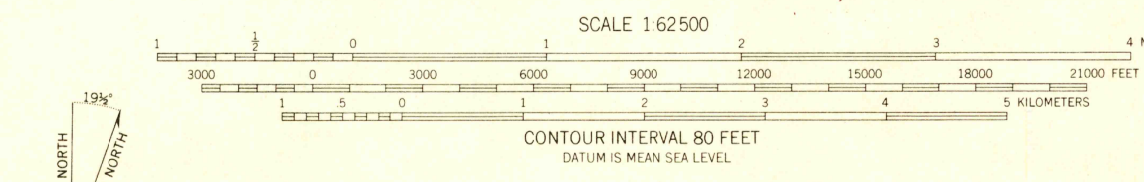
UNITED STATES
DEPARTMENT OF THE INTERIOR
GEOLOGICAL SURVEY

CLEVELAND MOUNTAIN QUADRANGLE
MONTANA
15 MINUTE SERIES (TOPOGRAPHIC)

BONNER
1:125 000



Maped, edited, and published by the Geological Survey
Control by USGS and USC&GS
Topography from aerial photographs by photogrammetric methods
Aerial photographs taken 1956 Field check 1959
Polyconic projection. 1927 North American datum
10,000 foot grid based on Montana coordinate system,
south and central zones
1000 meter Universal Transverse Mercator grid ticks,
zone 12, shown in blue
Land lines unsurveyed in Ts. 9 and 10 N. R. 17 W.



CLEVELAND MOUNTAIN, MONT.
N4630-W11345/15
1959

FOR SALE BY U. S. GEOLOGICAL SURVEY, DENVER 25, COLORADO OR WASHINGTON 25, D. C.
A FOLDER DESCRIBING TOPOGRAPHIC MAPS AND SYMBOLS IS AVAILABLE ON REQUEST

USGS
Historical File
Topographic Division
U.S.G.S.
FILE COPY
TOPOGRAPHIC DIVISION

NOV - 8 1961

2050