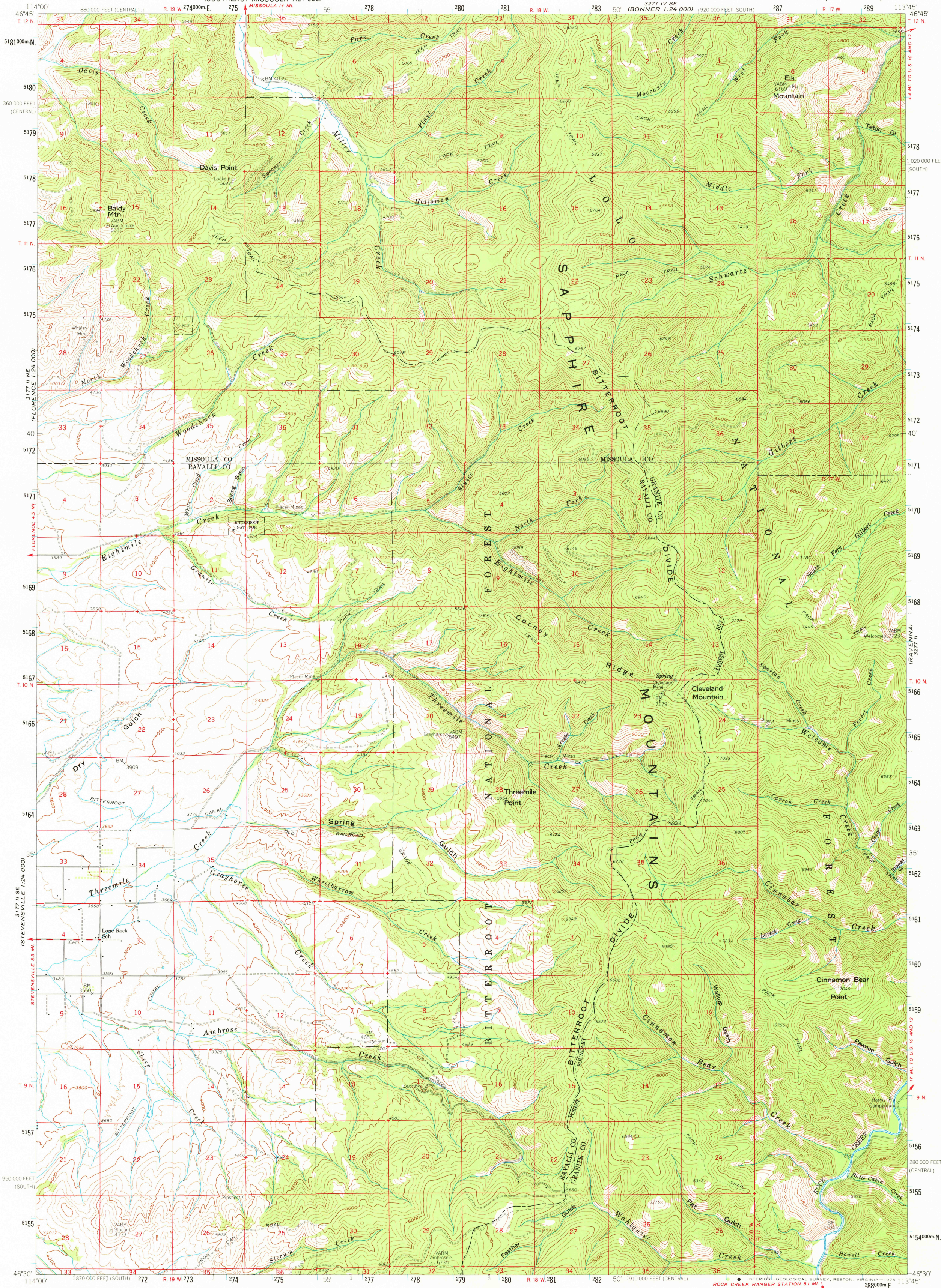


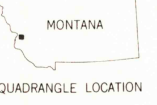
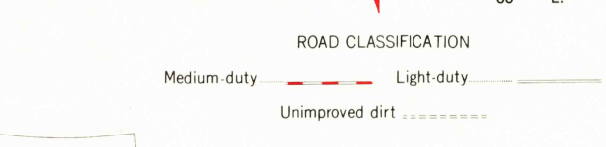
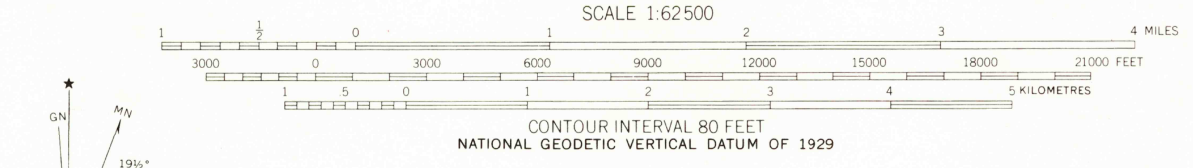
3771 SE MISSOULA  
SOUTHWEST 1:24 000

3771 SE  
CLINTON 1:24 000

UNITED STATES  
DEPARTMENT OF THE INTERIOR  
GEOLOGICAL SURVEY  
CLEVELAND MOUNTAIN QUADRANGLE  
MONTANA  
15 MINUTE SERIES (TOPOGRAPHIC)



Mapped, edited, and published by the Geological Survey  
Control by USGS and USCA&GS  
Topography from aerial photographs by photogrammetric methods  
Aerial photographs taken 1956 Field check 1959  
Polyconic projection 1927 North American datum  
10,000-foot grid based on Montana coordinate system,  
south and central zones  
1000 metre Transverse Mercator grid ticks,  
zone 12, shown in blue  
Land lines unsurveyed in Ts. 9 and 10 N. R. 17 W.



CLEVELAND MOUNTAIN, MONT.  
N4630-W11345/15

1959  
AMS 3277 III—SERIES V794

THIS MAP COMPLIES WITH NATIONAL MAP ACCURACY STANDARDS  
FOR SALE BY U. S. GEOLOGICAL SURVEY, DENVER, COLORADO 80225, OR RESTON, VIRGINIA 22092  
A FOLDER DESCRIBING TOPOGRAPHIC MAPS AND SYMBOLS IS AVAILABLE ON REQUEST