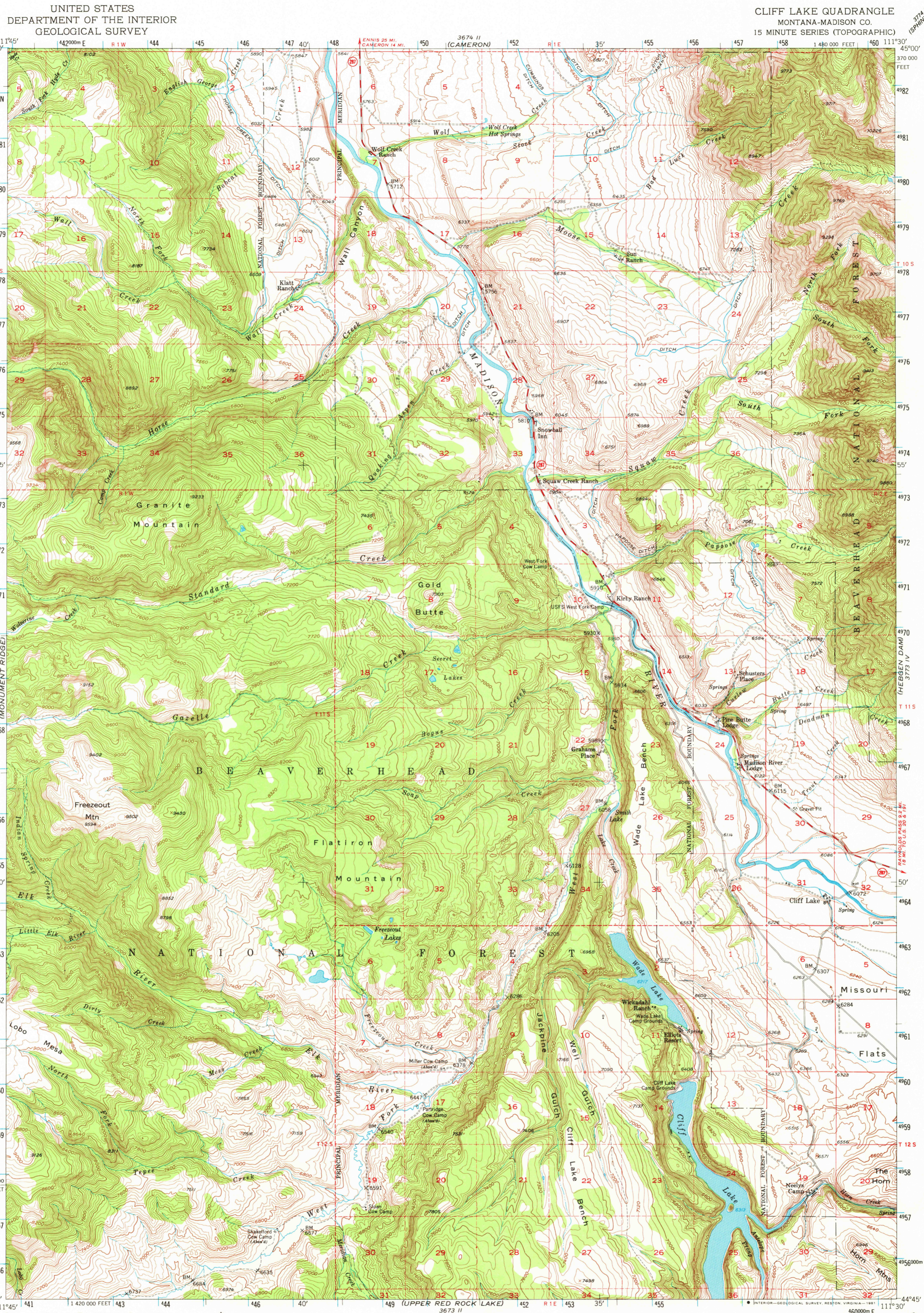


3673 III (UPPER RED ROCK LAKE)  
3673 IV (MONUMENT RIDGE)  
3673 II (CAMERON)  
3673 I (LOWER RED ROCK LAKE)



UNITED STATES DEPARTMENT OF THE INTERIOR GEOLOGICAL SURVEY  
CLIFF LAKE QUADRANGLE MONTANA-MADISON CO. 15 MINUTE SERIES (TOPOGRAPHIC)

Stereo compilation by Fairchild Aerial Surveys, Inc. for the Bureau of Reclamation. Field examination and publication by the Geological Survey as part of the Department of the Interior program for the development of the Missouri River Basin.

Control by USGS, USC&GS and Fairchild Aerial Surveys, Inc. UTM GRID and 1950 MAGNETIC NORTH DECLINATION AT CENTER OF SHEET. Topography from aerial photographs by stereoplanigraph methods. Aerial photographs taken 1947. Field check 1950.

Polycyclic projection, 1927 North American datum 10,000-foot grid based on Montana coordinate system, south zone.

Dashed land lines indicate approximate locations. Land lines unsurveyed in T. 9 S., R. 1 W., T. 11 S., R. 1 W., T. 12 S., R. 1 W., and T. 10 S., R. 2 E.

Unchecked elevations are shown in brown.

1000-meter Universal Transverse Mercator grid ticks, zone 12, shown in blue.

To place on the predicted North American Datum 1983, move the projection lines 11 meters north and 64 meters east.

There may be private inholdings within the boundaries of the National or State reservations shown on this map.

SCALE 1:62,500  
CONTOUR INTERVAL 40 FEET  
NATIONAL GEODETIC VERTICAL DATUM OF 1929

ROAD CLASSIFICATION  
1963  
Medium-duty ————  
Light-duty ————  
Unimproved dirt ————  
State Route ————

CLIFF LAKE, MONT.  
N4445-W11130/15  
1950  
DMA 3673 I-SERIES V794

USGS HISTORICAL FILE NATIONAL MAPPING DIVISION

SEP 3 1981  
1900