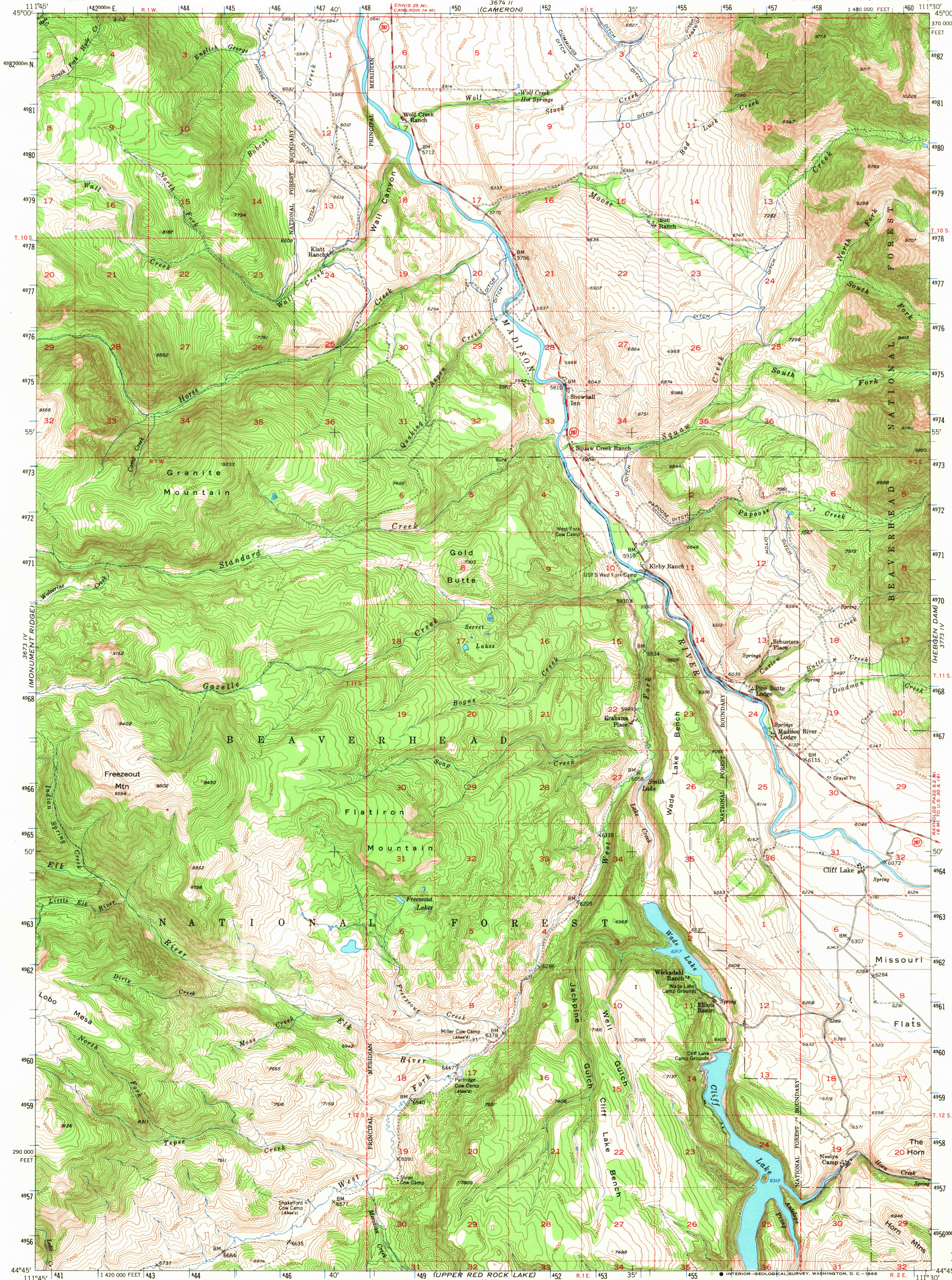


UNITED STATES
DEPARTMENT OF THE INTERIOR
GEOLOGICAL SURVEY

CLIFF LAKE QUADRANGLE
MONTANA-MADISON CO.
15 MINUTE SERIES (TOPOGRAPHIC)



Stereo compilation by Fairchild Aerial Surveys, Inc. for the Bureau of Reclamation. Field examination and publication by the Geological Survey as part of the Department of the Interior program for the development of the Missouri River Basin.

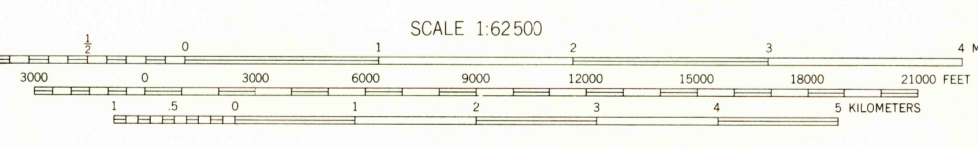
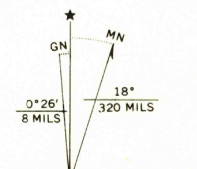
Control by USGS, USC&GS and Fairchild Aerial Surveys, Inc. Topography from aerial photographs by stereoplanigraph methods. Aerial photographs taken 1947. Field check 1950.

Polyconic projection. 1927 North American datum. 10,000-foot grid based on Montana coordinate system, south zone.

Dashed land lines indicate approximate locations. Land lines unsurveyed in T. 9 S.-R. 1 W., T. 11 S.-R. 1 W., T. 12 S.-R. 1 W., and T. 10 S.-R. 2 E.

Unchecked elevations are shown in brown.

1000-meter Universal Transverse Mercator grid ticks, zone 12, shown in blue.



CONTOUR INTERVAL 40 FEET
DATUM IS MEAN SEA LEVEL

THIS MAP COMPLIES WITH NATIONAL MAP ACCURACY STANDARDS
FOR SALE BY U. S. GEOLOGICAL SURVEY, DENVER, COLORADO 80225 OR WASHINGTON, D. C. 20242
A FOLDER DESCRIBING TOPOGRAPHIC MAPS AND SYMBOLS IS AVAILABLE ON REQUEST



ROAD CLASSIFICATION
1963
Medium-duty ———
Light-duty ———
Unimproved dirt ———
State Route ———

CLIFF LAKE, MONT.
N4445-W1130/15

U.S.G.S.
FILE COPY
TOPOGRAPHIC DIVISION

1950
AMS 3673 I-SERIES V794

USGS
Historical File
Topographic Division

4265
JUL 3 1968