

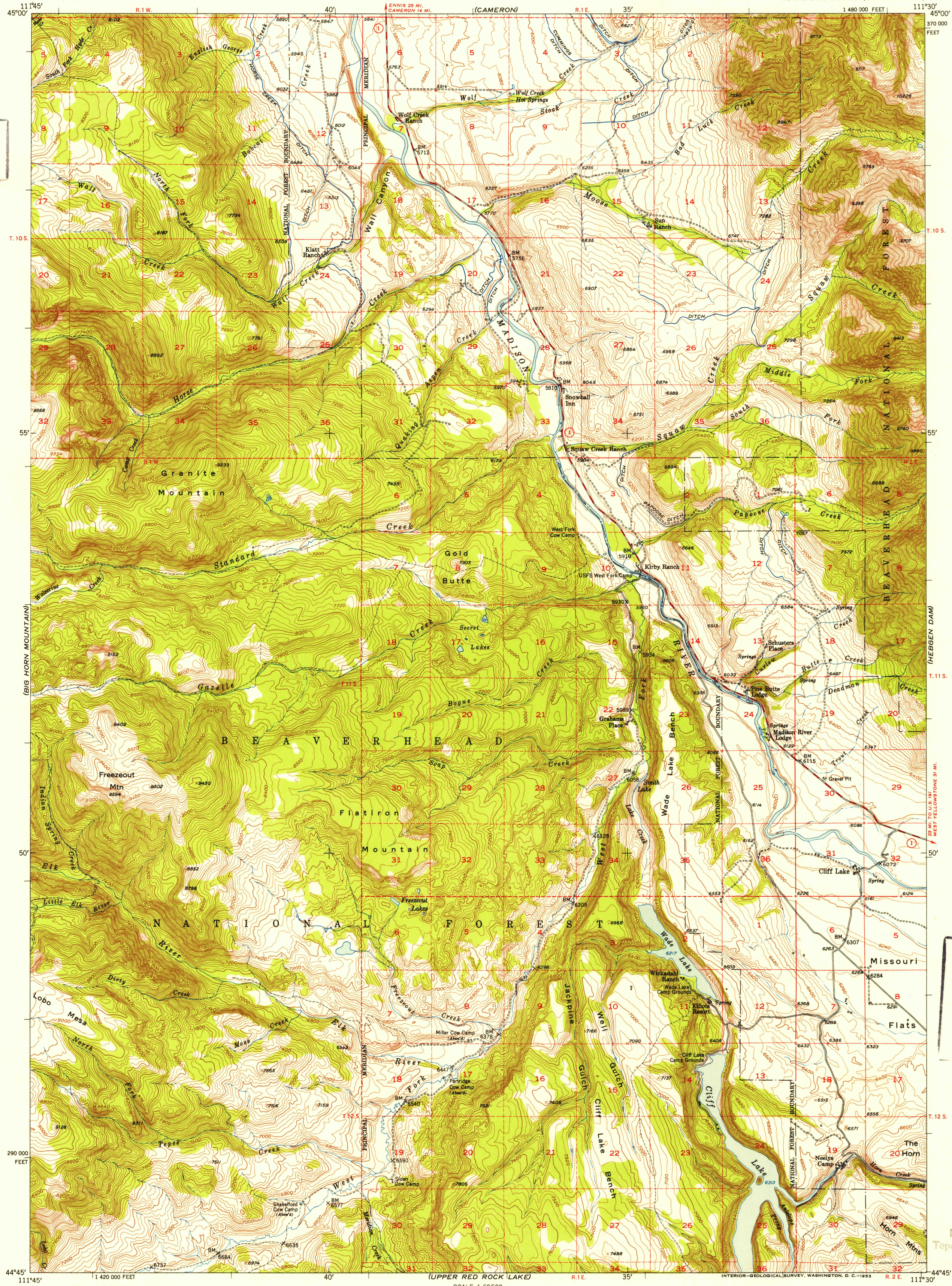
(VARNY)

UNITED STATES  
DEPARTMENT OF THE INTERIOR  
GEOLOGICAL SURVEY

CLIFF LAKE QUADRANGLE  
MONTANA-MADISON CO.  
15 MINUTE SERIES (TOPOGRAPHIC)

(SPHINX MOUNTAIN)

U. S. G. S.  
FILE COPY  
Inspected and Edited.

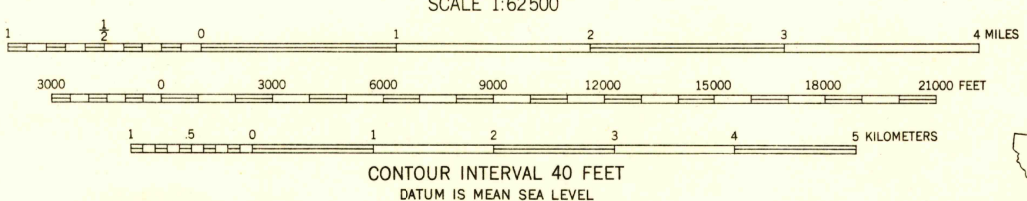


U. S. G. S.  
FILE COPY  
Inspected and Edited.

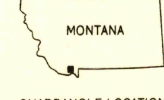
(LOWER RED ROCK LAKE)

Stereo compilation by Fairchild Aerial Surveys, Inc. for the Bureau of Reclamation. Field examination and publication by the Geological Survey as part of the Department of the Interior program for the development of the Missouri River Basin. Control by USGS, USC&GS and Fairchild Aerial Surveys, Inc. Topography from aerial photographs by stereoplanigraph methods. Aerial photographs taken 1947. Field check 1950. Polyconic projection. 1927 North American datum. 10,000-foot grid based on Montana coordinate system, south zone. Dashed land lines indicate approximate locations. Land lines unsurveyed in T. 9 S.-R. 1 W., T. 11 S.-R. 1 W., T. 12 S.-R. 1 W., and T. 10 S.-R. 2 E. Unchecked elevations are shown in brown.

TRUE NORTH  
MAGNETIC NORTH  
APPROXIMATE MEAN DECLINATION, 1950



ROAD CLASSIFICATION  
Heavy-duty ——— 4 LANE 16 LANE ——— Light-duty  
Medium-duty ——— 4 LANE 16 LANE ——— Unimproved dirt ———  
U. S. Route ——— State Route ———



CLIFF LAKE, MONT.  
N4445-W11130/15  
1950

THIS MAP COMPLIES WITH NATIONAL MAP ACCURACY STANDARDS  
FOR SALE BY U. S. GEOLOGICAL SURVEY, FEDERAL CENTER, DENVER, COLORADO OR WASHINGTON 25, D. C.  
A FOLDER DESCRIBING TOPOGRAPHIC MAPS AND SYMBOLS IS AVAILABLE ON REQUEST

USGS  
Historical File  
Topographic Division

MAR 2 1953

2475