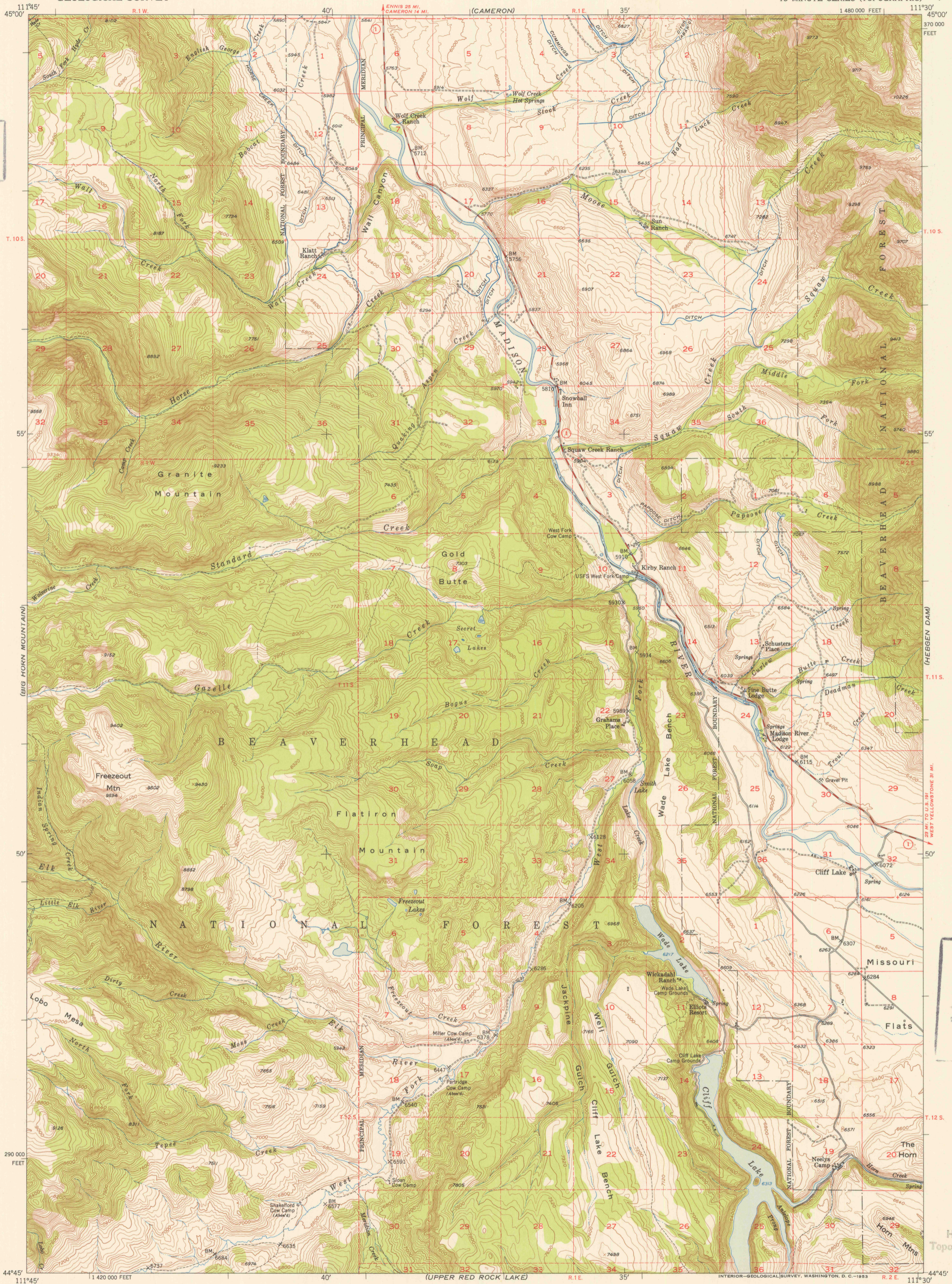


U. S. G. S.
FILE COPY
Inspection and Editing.



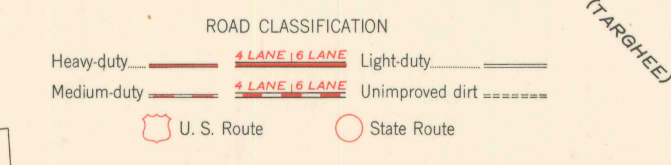
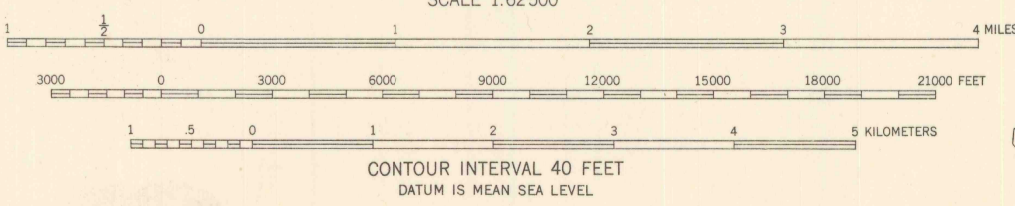
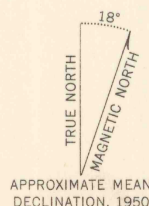
Stereo compilation by Fairchild Aerial Surveys, Inc. for the Bureau of Reclamation. Field examination and publication by the Geological Survey as part of the Department of the Interior program for the development of the Missouri River Basin.

Control by USGS, USC&GS and Fairchild Aerial Surveys, Inc. Topography from aerial photographs by stereoplanigraph methods. Aerial photographs taken 1947. Field check 1950.

Polyconic projection. 1927 North American datum. 10,000-foot grid based on Montana coordinate system, south zone.

Dashed land lines indicate approximate locations. Land lines surveyed in T. 9 S.-R. 1 W., T. 11 S.-R. 1 W., T. 12 S.-R. 1 W., and T. 10 S.-R. 2 E.

Unchecked elevations are shown in brown.



CLIFF LAKE, MONT.
N4445-W1130/15

1950

THIS MAP COMPLIES WITH NATIONAL MAP ACCURACY STANDARDS
FOR SALE BY U. S. GEOLOGICAL SURVEY, FEDERAL CENTER, DENVER, COLORADO OR WASHINGTON 25, D. C.
A FOLDER DESCRIBING TOPOGRAPHIC MAPS AND SYMBOLS IS AVAILABLE ON REQUEST

U. S. G. S.
FILE COPY
Inspection and Editing.

USGS
Historical File
Topographic Division

MAR 2 1953
2875