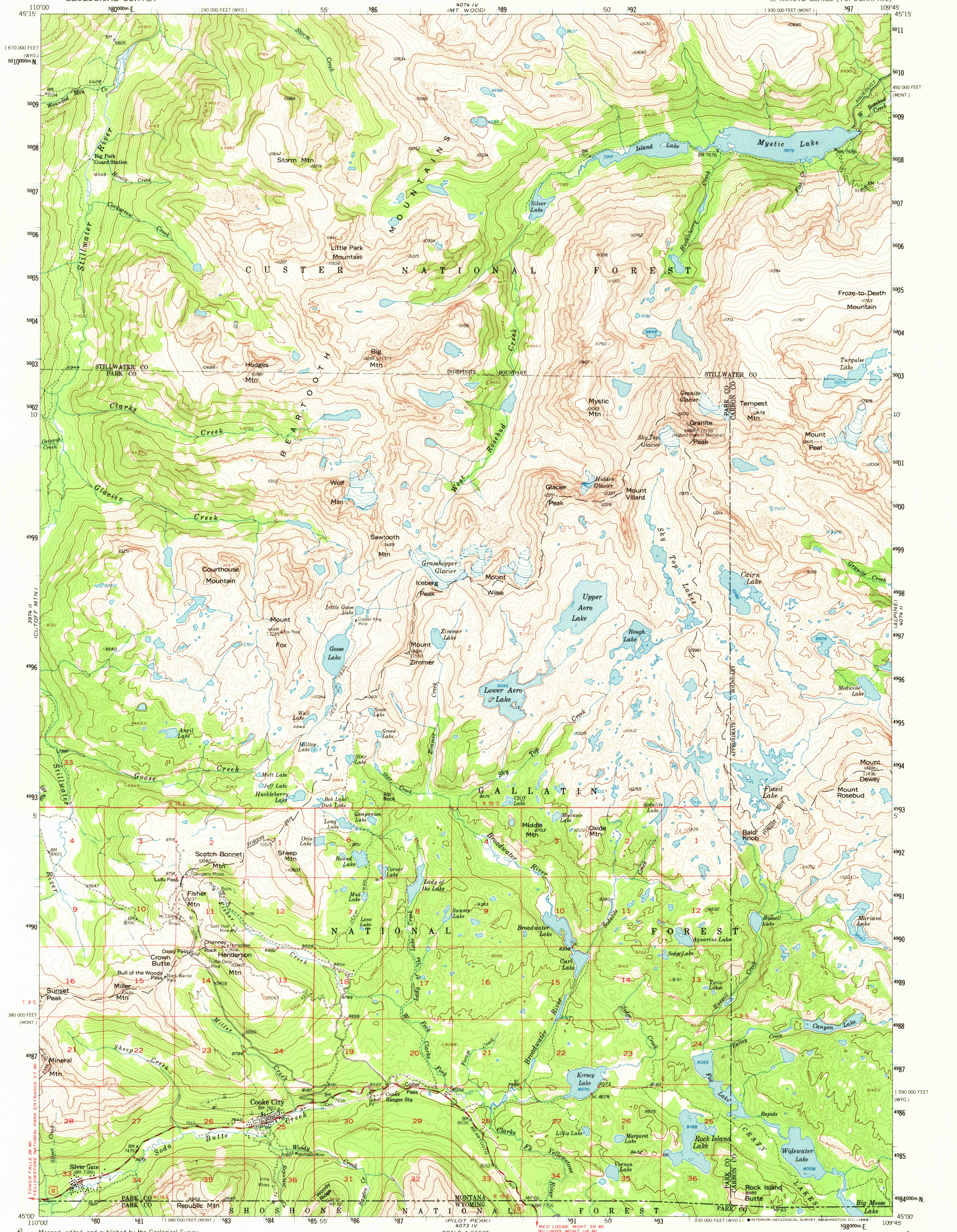


UNITED STATES
DEPARTMENT OF THE INTERIOR
GEOLOGICAL SURVEY

COOKE CITY QUADRANGLE
MONTANA-WYOMING
15 MINUTE SERIES (TOPOGRAPHIC)



Maped, edited, and published by the Geological Survey as part of the Department of the Interior program for the development of the Missouri River Basin Control by USGS and USC&GS
Topography from aerial photographs by photogrammetric methods
Aerial photographs taken 1949 and 1951. Field check 1956
Polyconic projection. 1927 North American datum
10,000-foot grid based on Montana coordinate system, south zone and Wyoming coordinate system, west central zone
1000-meter Universal Transverse Mercator grid ticks, zone 12, shown in blue
Land lines unsurveyed except in T.9S., R.14 and 15 E.
Unchecked elevations are shown in brown

THIS MAP COMPLIES WITH NATIONAL MAP ACCURACY STANDARDS
FOR SALE BY U.S. GEOLOGICAL SURVEY, DENVER, COLORADO 80225, OR WASHINGTON, D. C. 20242
A FOLDER DESCRIBING TOPOGRAPHIC MAPS AND SYMBOLS IS AVAILABLE ON REQUEST

ROAD CLASSIFICATION
Medium-duty ——— Light-duty ———
Unimproved dirt ———
U. S. Route ———
COOKE CITY, MONT.-WYO.
N4500—W10945/15
1956
AMS 4074 III—SERIES V794

USGS Library
Reston, VA.
Topo Archive