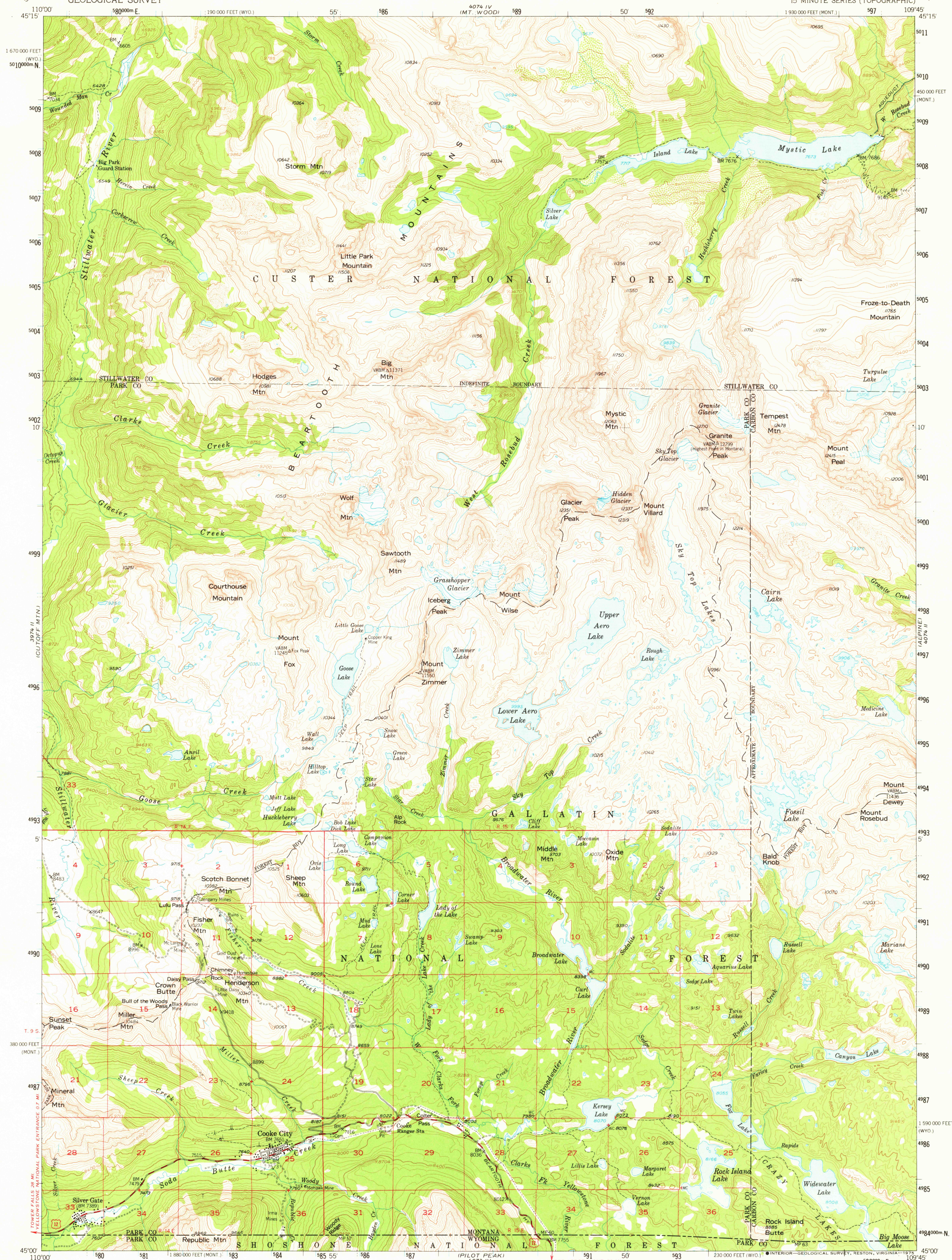


3974 IV
(MT. WOOD)

UNITED STATES
DEPARTMENT OF THE INTERIOR
GEOLOGICAL SURVEY

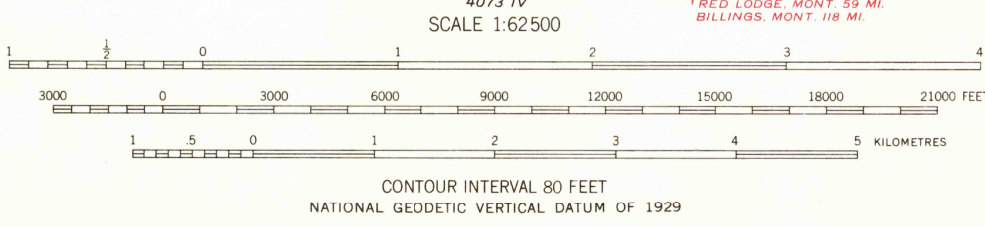
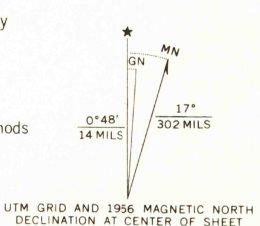
COOKE CITY QUADRANGLE
MONTANA-WYOMING
15 MINUTE SERIES (TOPOGRAPHIC)

4074 III
(EMERALD LAKE)



3974 IV
(MT. WOOD)

Maped, edited, and published by the Geological Survey
as part of the Department of the Interior program
for the development of the Missouri River Basin
Control by USGS and USC&GS
Topography from aerial photographs by photogrammetric methods
Aerial photographs taken 1949 and 1951. Field check 1956
Polyconic projection. 1927 North American datum
10,000-foot grid based on Montana coordinate system,
south zone and Wyoming coordinate system,
west central zone
1000-metre Universal Transverse Mercator grid ticks,
zone 12, shown in blue
Land lines unsurveyed except in T.S. 14 and 15 E.
Unchecked elevations are shown in brown



ROAD CLASSIFICATION
Medium-duty ——— Light-duty ———
Unimproved dirt - - - - -
U.S. Route

COOKE CITY, MONT.-WYO.
N4500—W10945/15
1956
AMS 4074 III—SERIES V794

039