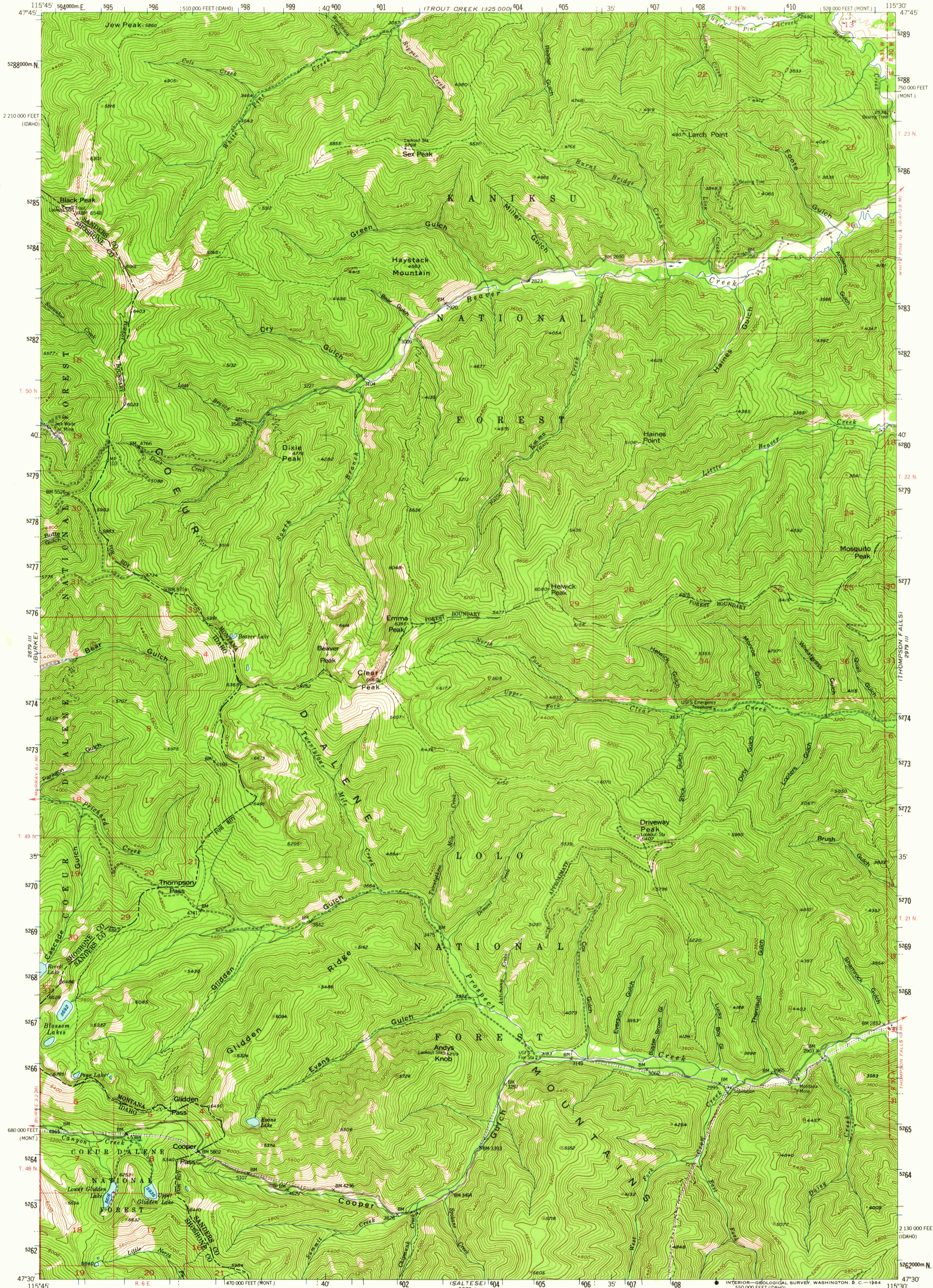


UNITED STATES
DEPARTMENT OF THE INTERIOR
GEOLOGICAL SURVEY

COOPER GULCH QUADRANGLE
MONTANA-IDAHO
15 MINUTE SERIES (TOPOGRAPHIC)



Mapped, edited, and published by the Geological Survey

Control by USGS and USC&GS

Topography from aerial photographs by multiplex methods

Aerial photographs taken 1951. Field check 1956

Polyconic projection. 1927 North American datum

10,000-foot grid based on Montana coordinate system,

central zone and Idaho coordinate system, west zone

1000-meter Universal Transverse Mercator grid ticks,

zone 11, shown in blue

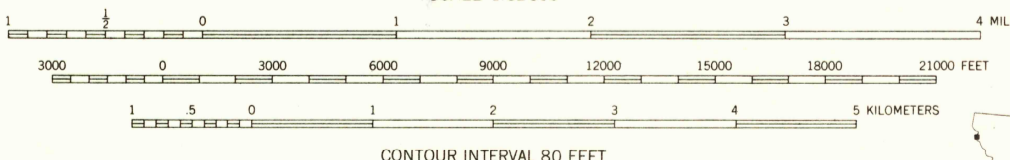
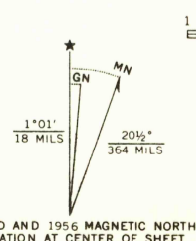
Dashed land lines indicate approximate locations

Land lines unsurveyed in T. 20 and 21 N., R. 31 W.,

T. 20, 21, 22, and 23 N., R. 32 W., and in parts of

T. 22 and 23 N., R. 31 W.

T. 48, 49, and 50 N., R. 6 E. are based on the Boise Meridian



ROAD CLASSIFICATION
Light-duty ————— Unimproved dirt - - - - -

COOPER GULCH, MONT.-IDAHO
N4730-W11530/15

1956

AMS 2879 II—SERIES V794

THIS MAP COMPLIES WITH NATIONAL MAP ACCURACY STANDARDS
FOR SALE BY U. S. GEOLOGICAL SURVEY, DENVER 25, COLORADO OR WASHINGTON 25, D. C.
A FOLDER DESCRIBING TOPOGRAPHIC MAPS AND SYMBOLS IS AVAILABLE ON REQUEST

SEP 21 1964

2585
USGS
Historical File
Topographic Division