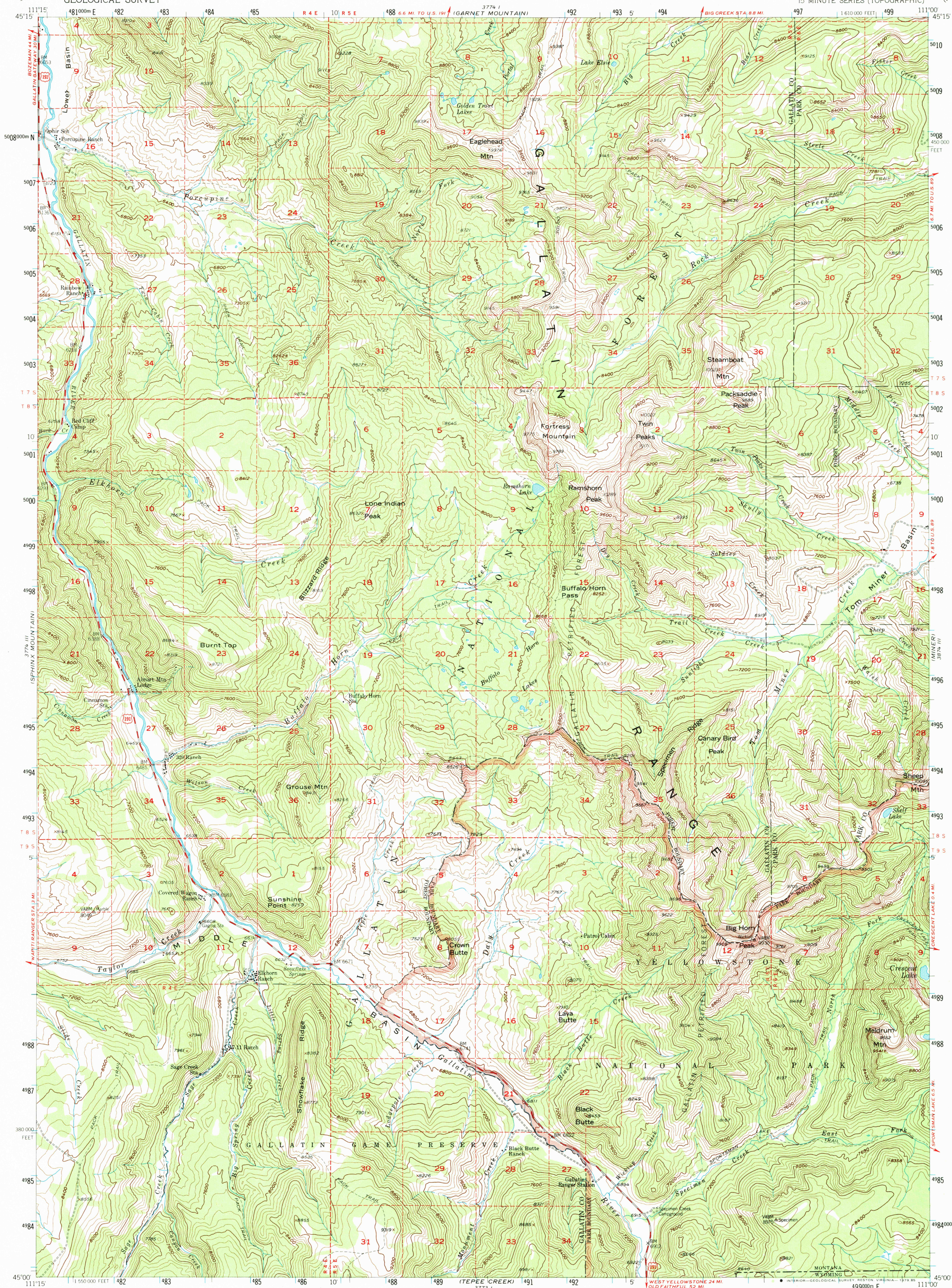


(SPANISH PEAKS)
3774 II
3775 IV

UNITED STATES
DEPARTMENT OF THE INTERIOR
GEOLOGICAL SURVEY

CROWN BUTTE QUADRANGLE
MONTANA-WYOMING
15 MINUTE SERIES (TOPOGRAPHIC)

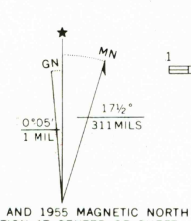
3774 IV
3775 IV
(FRIDLEY PEAK)



(HEBBY DAM)
3775 IV

Mapped, edited, and published by the Geological Survey as part of the Department of the Interior program for the development of the Missouri River Basin.
Control by USGS and USC&GS
Topography from aerial photographs by stereoplanograph methods 1948 for the Bureau of Reclamation and by multiplex methods 1954 by USGS
Aerial photographs taken 1947 and 1949. Field check 1955
Polyconic projection. 1927 North American datum. 10,000-foot grid based on Montana coordinate system, south zone
1000-meter Universal Transverse Mercator grid ticks, zone 12, shown in blue
Dashed land lines indicate approximate locations
Land lines unsurveyed in parts of T. 7 S. R. 4 E. and T. 9 S. - R. 4, 5, and 6 E.
Unchecked elevations are shown in brown

There may be private inholdings within the boundaries of the National or State reservations shown on this map



SCALE 1:62500
CONTOUR INTERVAL 80 FEET
NATIONAL GEODETIC VERTICAL DATUM OF 1929



ROAD CLASSIFICATION
Medium duty ——— Light duty ———
Unimproved dirt ———
U.S. Route

CROWN BUTTE, MONT.-WYO.
N4500-W11100/15

1955

DMA 3774 II-SERIES V894

USGS NMD RESEARCH
NOV 04 1985
REFERENCE COLLECTION