

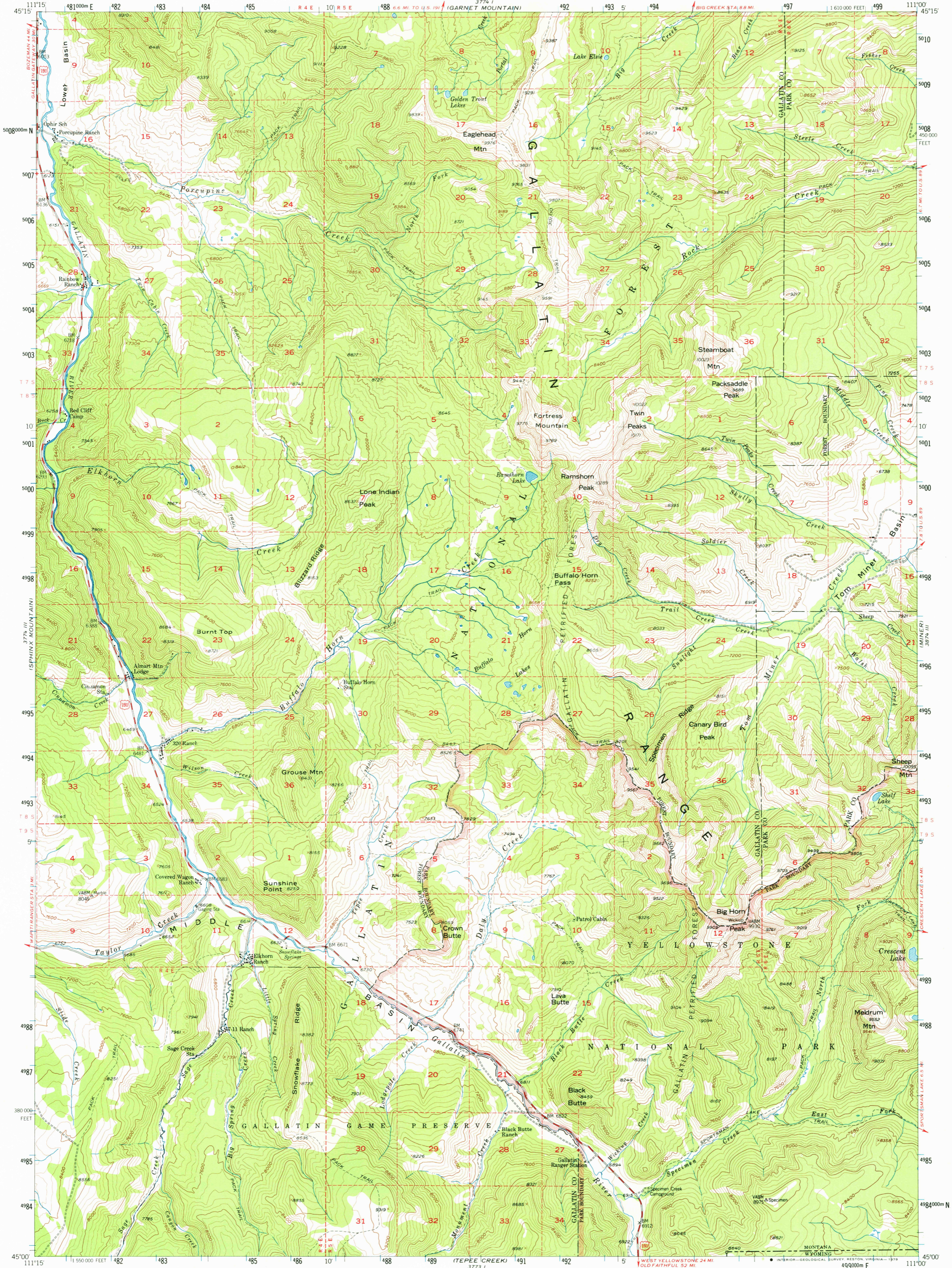
(SPANISH PEAKS)
3774 IV
3775 IV

UNITED STATES
DEPARTMENT OF THE INTERIOR
GEOLOGICAL SURVEY



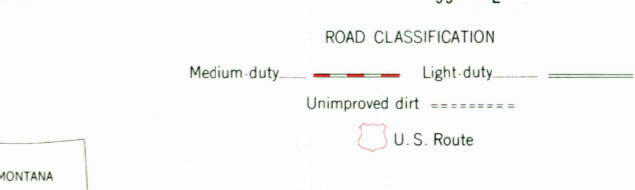
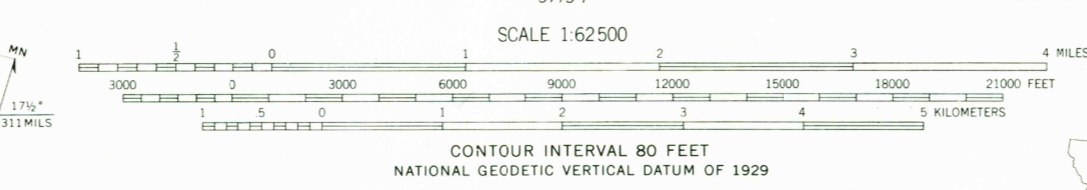
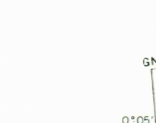
CROWN BUTTE QUADRANGLE
MONTANA-WYOMING
15 MINUTE SERIES (TOPOGRAPHIC)

3774 IV
3775 IV
(FRODOLEY PEAK)



(HEBEN DAM)
3775 IV

Mapped, edited, and published by the Geological Survey as part of the Department of the Interior program for the development of the Missouri River Basin.
Control by USGS and USC&GS
Topography from aerial photographs by stereoplanigraph methods 1948 for the Bureau of Reclamation and by multiplex methods 1954 by USGS
Aerial photographs taken 1947 and 1949. Field check 1955
Polyconic projection. 1927 North American datum 10,000-foot grid based on Montana coordinate system, south zone
1000-meter Universal Transverse Mercator grid ticks, zone 12, shown in blue
Dashed land lines indicate approximate locations
Land lines unsurveyed in parts of T. 7 S. R. 4 E. and T. 9 S.-Rs. 4, 5, and 6 E.
Unchecked elevations are shown in brown



THIS MAP COMPLIES WITH NATIONAL MAP ACCURACY STANDARDS
FOR SALE BY U.S. GEOLOGICAL SURVEY, DENVER, COLORADO 80225, OR RESTON, VIRGINIA 22092
A FOLDER DESCRIBING TOPOGRAPHIC MAPS AND SYMBOLS IS AVAILABLE ON REQUEST

USGS
Historical File
Topographic Division

(MOUNT HOLMES)
3775 IV

SEP 27 1979

1400

CROWN BUTTE, MONT.-WYO.
N4500-W11100/15
1955

DMA 3774 II-SERIES V894